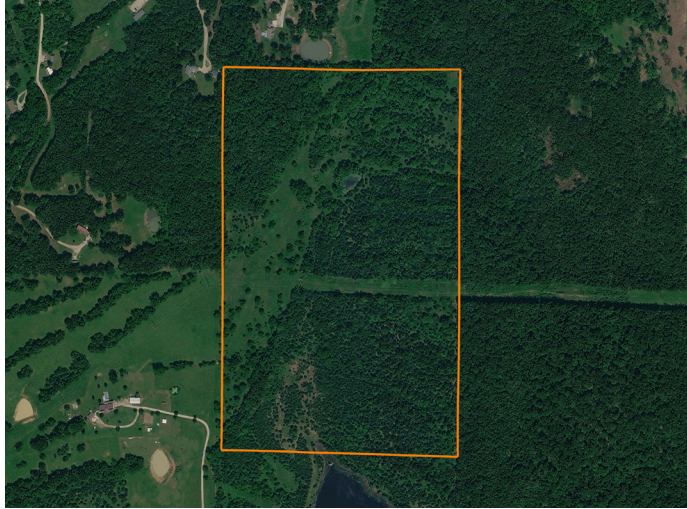


# LAND FOR SALE

## 63 +/- ACRES TOUCHING MARK TWAIN NATIONAL FOREST



### PROPERTY FEATURES

- Spring-fed pond
- Touching Mark Twain National Forest
- Mature timber
- Seclusion
- Located off a private drive
- Whitetail deer
- Turkey
- Ducks
- Cleared & timbered areas
- Perimeter trails



COUNTY: **PULASKI**

STATE: **MISSOURI**

ACRES: **63**

For more information, contact:

**AUSTIN PHILLIPS**, Land Agent

417.521.0095 | [APhillips@MidwestLandGroup.com](mailto:APhillips@MidwestLandGroup.com)

**MidwestLandGroup.com** BUYERS, SELLERS, AND LAND – CONNECTED

This property is being offered by Midwest Land Group, LLC, 7111 W. 151st Street, Ste. 27, Overland Park, KS 66223, 913.674.8010.  
Licensed in AL, AR, IA, IL, IN, KS, KY, LA, MN, MO, MS, MT, NE, OH, OK, SD, TN, TX, WI, and WY.

