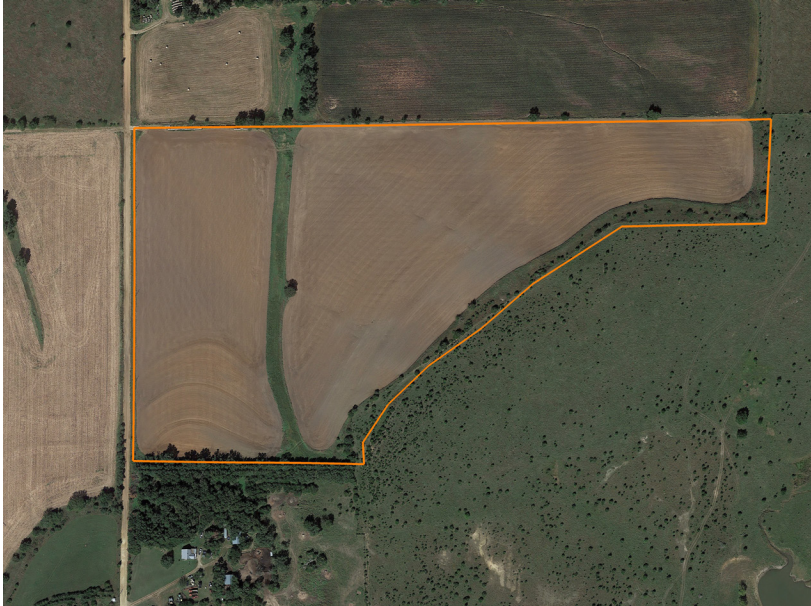


LAND FOR SALE

BUILD, FARM, HUNT NEAR STATE LAKE

COUNTY: **OTTAWA**
STATE: **KANSAS**
ACRES: **35.7**



PROPERTY FEATURES

- NCCPI average of 68.2
- Predominantly Class III soils
- Income producing
- Build site potential
- Utilities nearby
- Gravel road frontage
- Native wildlife
- Mineral rights intact
- Taxes 2025: \$960.24
- 3 miles to Wells
- 8 miles to Bennington
- 9 miles to Minneapolis

For more information, contact:

JOSH HUBBARD, Land Agent

785.307.0460 | JHubbard@MidwestLandGroup.com

MidwestLandGroup.com

