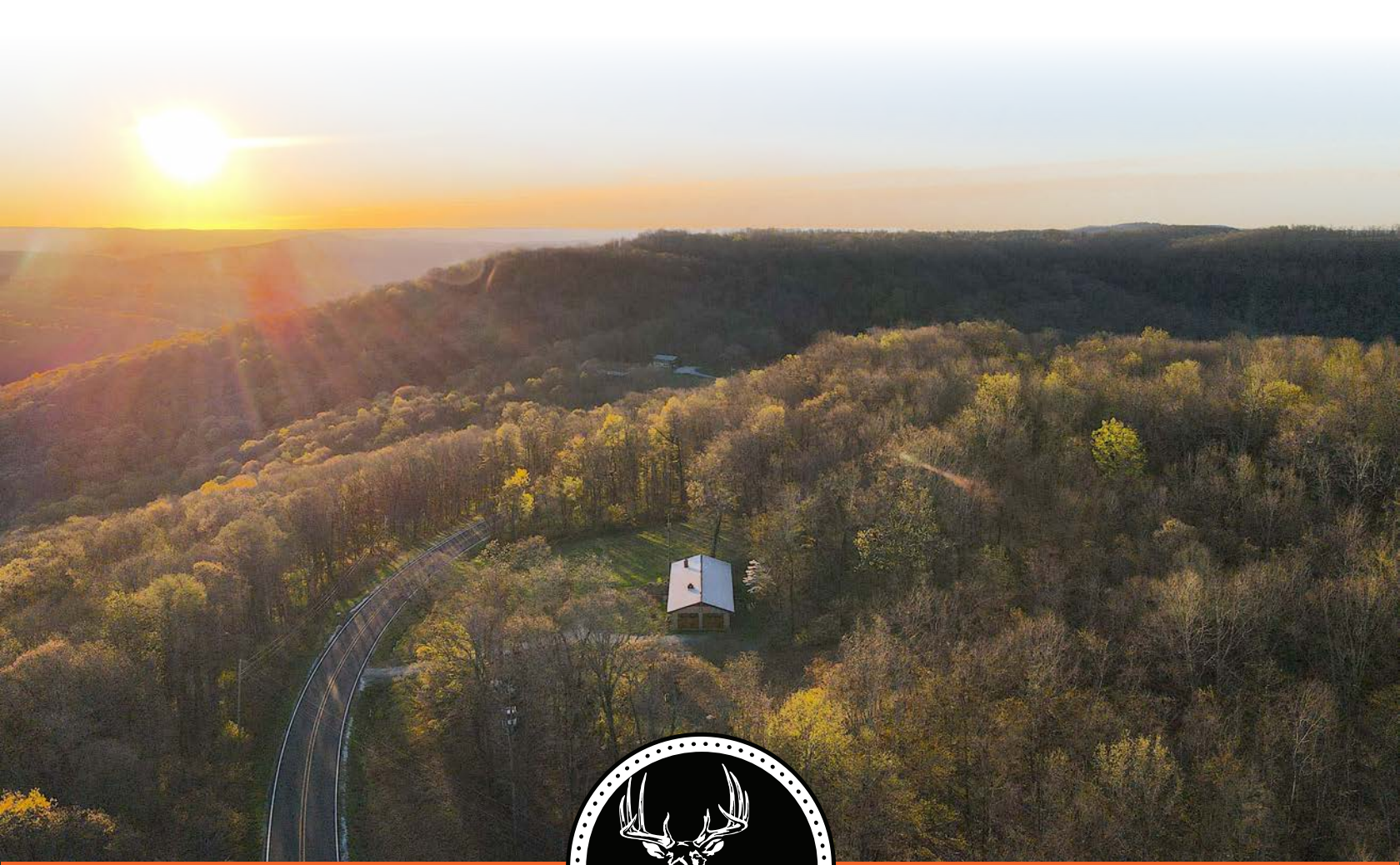


MIDWEST LAND GROUP PRESENTS

8 ACRES IN

NEWTON COUNTY ARKANSAS



MidwestLandGroup.com

MIDWEST LAND GROUP IS HONORED TO PRESENT

3 BED, 1 BATH BRICK HOME ON 8 +/- ACRES BORDERING THE NATIONAL FOREST

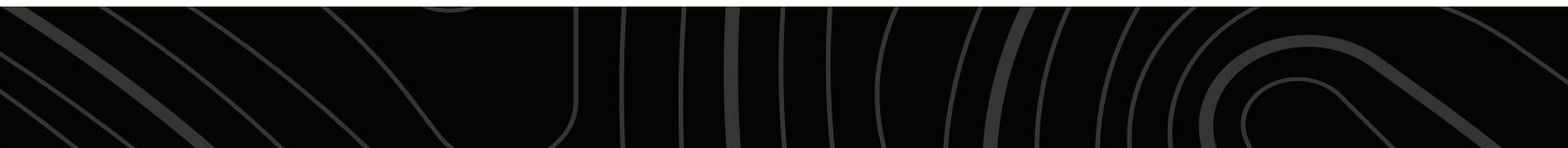
This charming 3 bed, 1 bath brick home is nestled on approximately 8 +/- acres with pavement frontage bordering the National Forest, providing the perfect backdrop for nature lovers. A cleared area is already designated for a shop building that would add a great space for hobbies and storage. The views from the home are nothing short of breathtaking, enhancing the overall appeal of the property. Essential utilities are already on site, including electric, rural water, septic, and fiber internet. There are additional build sites on the property that increase in elevation, adding even greater views.

The home, designed for comfort and sophistication, offers 2 large bedrooms and 1 smaller bedroom. The kitchen features granite countertops, an island, and beautiful handcrafted cabinetry. The main living space has windows that look out over miles of the Ozark mountains, where the abundant wildlife in the area can be observed. Between the national forest boundary, proximity to many outdoor recreation attractions, pavement frontage, and room to expand, this property checks a lot of boxes!

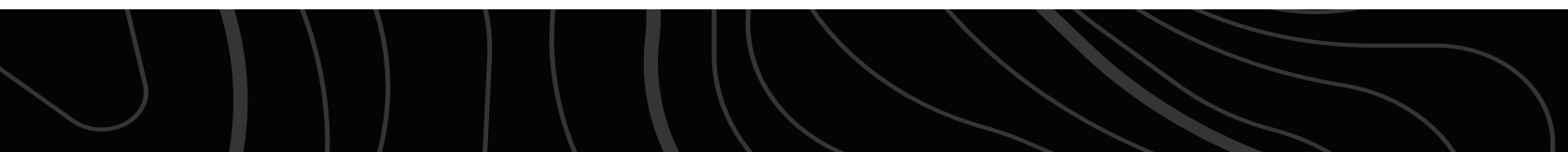
PROPERTY FEATURES

COUNTY: **NEWTON** | STATE: **ARKANSAS** | ACRES: **8**

- 3 bed, 1 bath brick home
- 8 +/- acres
- Pavement frontage
- Bordering the national forest
- Cleared site for a shop
- Handcrafted cabinetry
- Incredible views
- Electric on site
- Rural water on site
- Septic on site
- Fiber internet on site
- Granite countertops
- Abundant wildlife
- Minutes from multiple trailheads and outdoor recreation attractions
- 1 hour 15 minutes to Fayetteville, AR
- 1 hour 30 minutes to Branson, MO
- 30 minutes to the Buffalo River



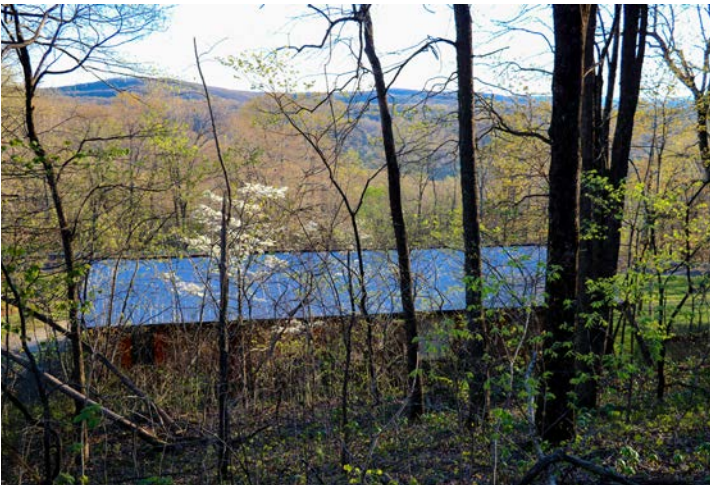
3 BED, 1 BATH BRICK HOME



8 +/- ACRES



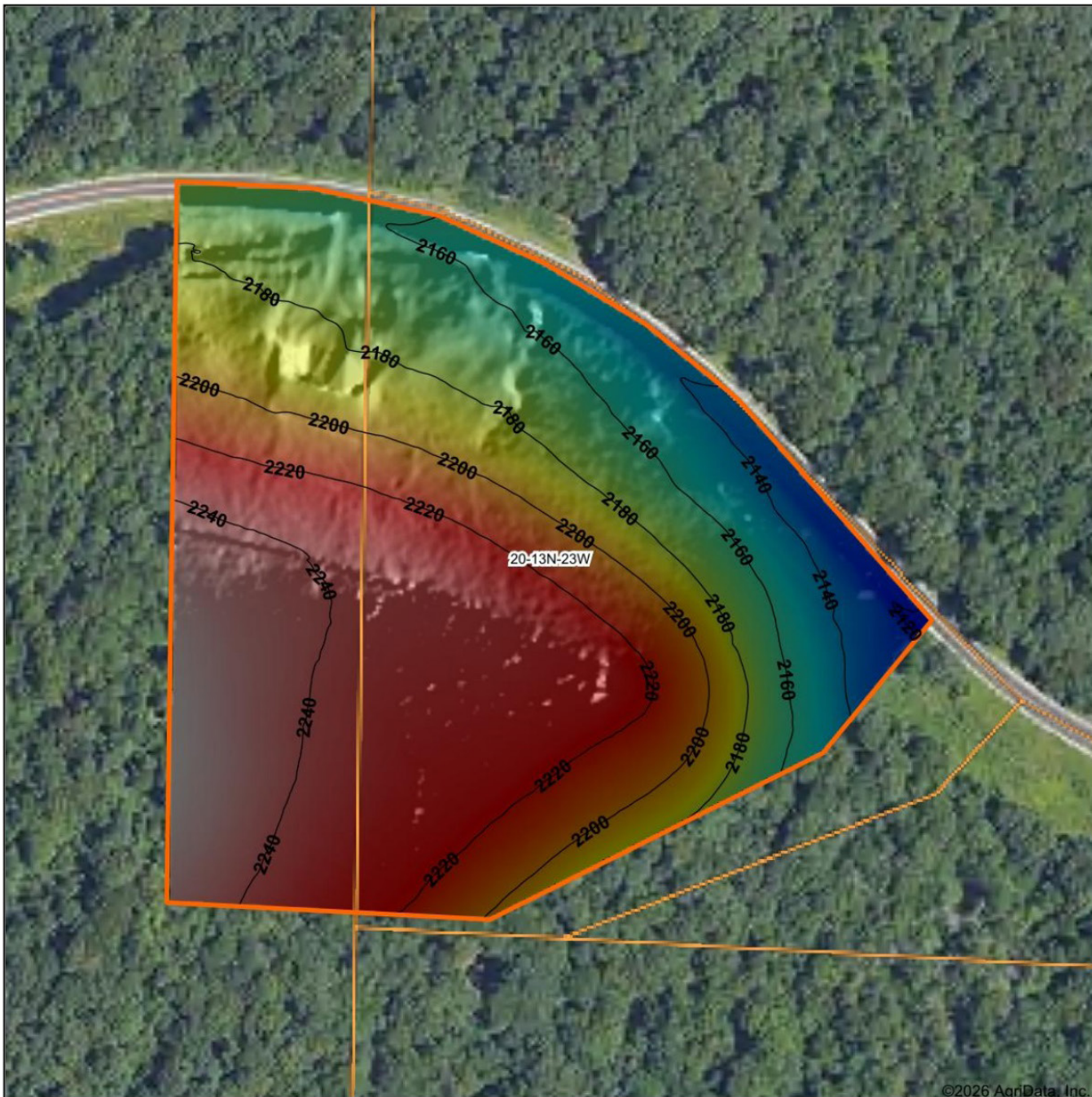
BORDERING NATIONAL FOREST



AERIAL MAP



HILLSHADE MAP



©2026 AgriData, Inc.



Maps Provided By:



© AgriData, Inc. 2025 www.AgriDataInc.com

Source: USGS 1 meter dem
 Interval(ft): 20
 Min: 2,116.2
 Max: 2,258.7
 Range: 142.5
 Average: 2,200.8
 Standard Deviation: 34.58 ft

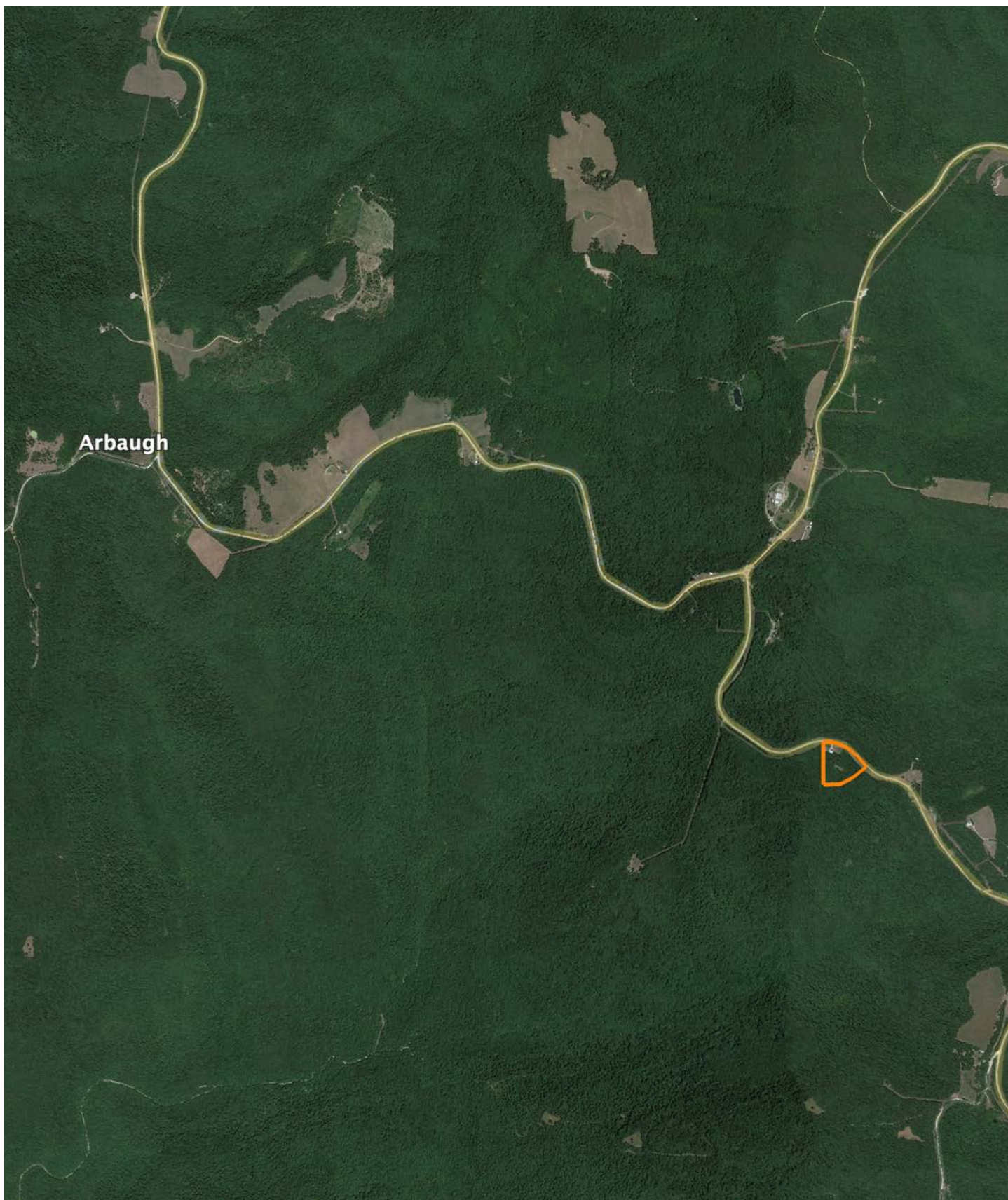


4/9/2026

20-13N-23W
Newton County
Arkansas

Boundary Center: 35° 45' 59.89, -93° 27' 37.36

OVERVIEW MAP



AGENT CONTACT

Ben Williams is passionate about working with land and living life in the great outdoors. A native of Topeka, Kansas, Ben graduated from Kansas State University with dual Bachelor's Degrees in park management and conservation, as well as natural resource management.

During his college years, Ben conducted research on invasive plant and wildlife species to assess their impact on native species. His studies also covered wildlife habitat preservation, conservation, flooding and erosion control, and public hunting land management. Before joining Midwest Land Group, Ben worked as an arborist in Benton County, Arkansas, caring for trees and maintaining their health.

In his free time, Ben enjoys hunting waterfowl, golfing, and hiking. Now residing in Bentonville, Arkansas, with his wife Kaitlynn and son Bodie, Ben is a devoted family man whose care and understanding of people extends to his work as a land agent. His enthusiasm for helping clients achieve their goals is evident in his commitment to exceptional service. If you're looking to buy or sell land in Northwest Arkansas, don't hesitate to give Ben a call. He'll go above and beyond to ensure you find exactly what you're searching for.



BEN WILLIAMS,
LAND AGENT
479.487.0177
BWilliams@MidwestLandGroup.com



MidwestLandGroup.com

This property is being offered by Midwest Land Group, LLC. 913.674.8010. All information provided by Midwest Land Group, LLC or their agents was acquired from sources deemed accurate and reliable, however we do not warrant its accuracy or completeness. Midwest Land Group, LLC assumes no liability for error, omission or investment results. Midwest Land Group, LLC. Licensed in Alabama, Arkansas, Illinois, Indiana, Iowa, Kansas, Kentucky, Louisiana, Minnesota, Mississippi, Missouri, Montana, Nebraska, Ohio, Oklahoma, South Dakota, Tennessee, Texas, Wisconsin, and Wyoming.