



MIDWEST LAND GROUP
PRESENTS
MONTGOMERY COUNTY
MISSOURI
6.5 ACRES



MIDWEST LAND GROUP IS HONORED TO PRESENT

BEAUTIFUL 6.5 ACRE LAKE LOT IN THE COUNTRY

Discover the perfect canvas for your dream haven on this stunning 6-acre lake lot, nestled in a picturesque country setting. Imagine waking up to the gentle sounds of nature, surrounded by mature trees, and glistening water that offer both privacy and a sense of belonging in a quaint community that feels just like home. Whether you envision building your forever home or a charming weekend getaway, this lot is primed and ready for your unique vision. Take advantage of the serene 22 acre lake right at your doorstep, where you can immerse yourself in the joys of fishing, or simply enjoy peaceful evenings watching the sunset reflect on the water. But sorry, there is no hunting here.

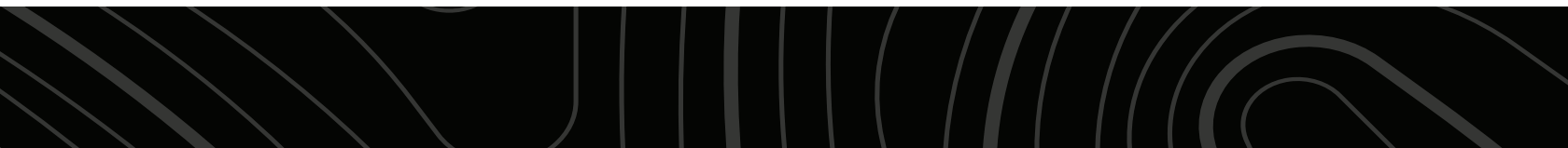
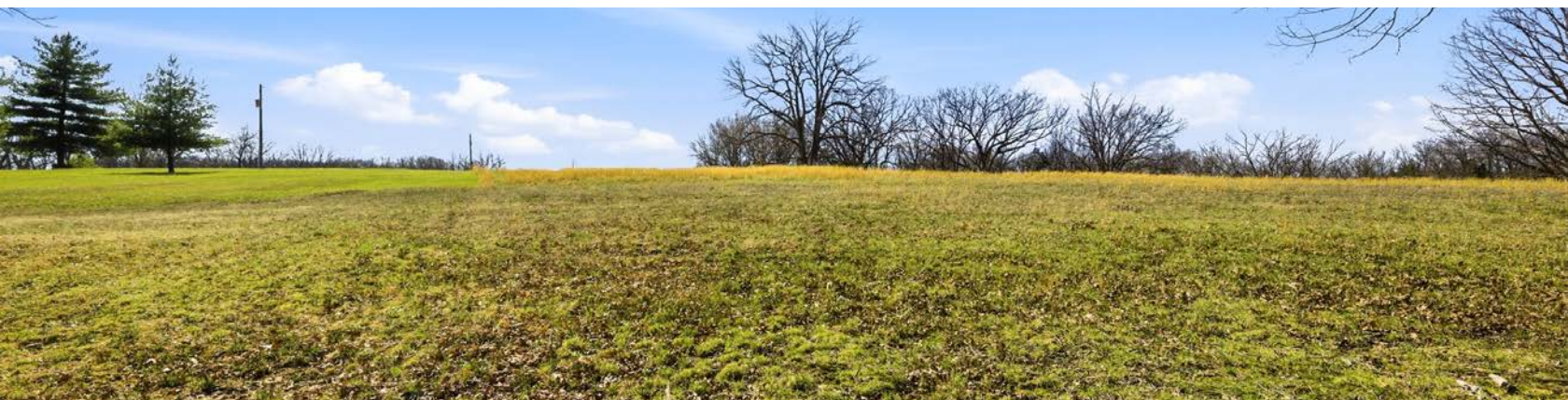
For families and friends, the property features a delightful park area with a sandy beach, perfect for summer picnics, gatherings, and countless memories. The property is located just outside of Rhineland. It is a short drive from the bustling charm of Hermann, where you can explore local wineries, shop in quaint boutiques, and dine on delicious cuisine.

This 6.5 acre lake lot is not just a place to build; it's a gateway. Don't miss your chance to claim this rare gem and start creating the life you've always dreamed of. Your forever home awaits!

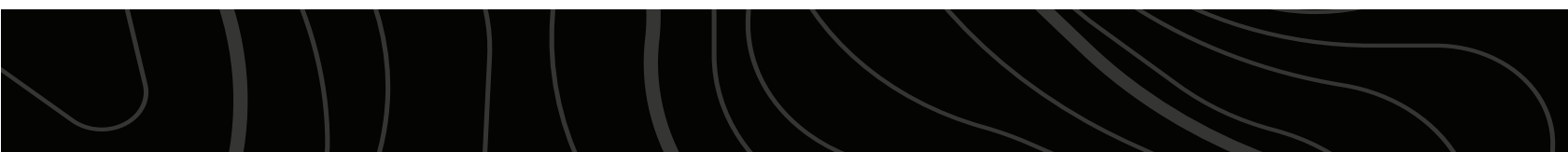
PROPERTY FEATURES

COUNTY: **MONTGOMERY** | STATE: **MISSOURI** | ACRES: **6.5**

- Lake lot
- Quiet community
- Ready to build
- Wooded privacy
- Fishing
- Swimming
- Park area with beach
- Amazing views
- Country living
- Short drive from Hermann



READY TO BUILD LAKE LOT



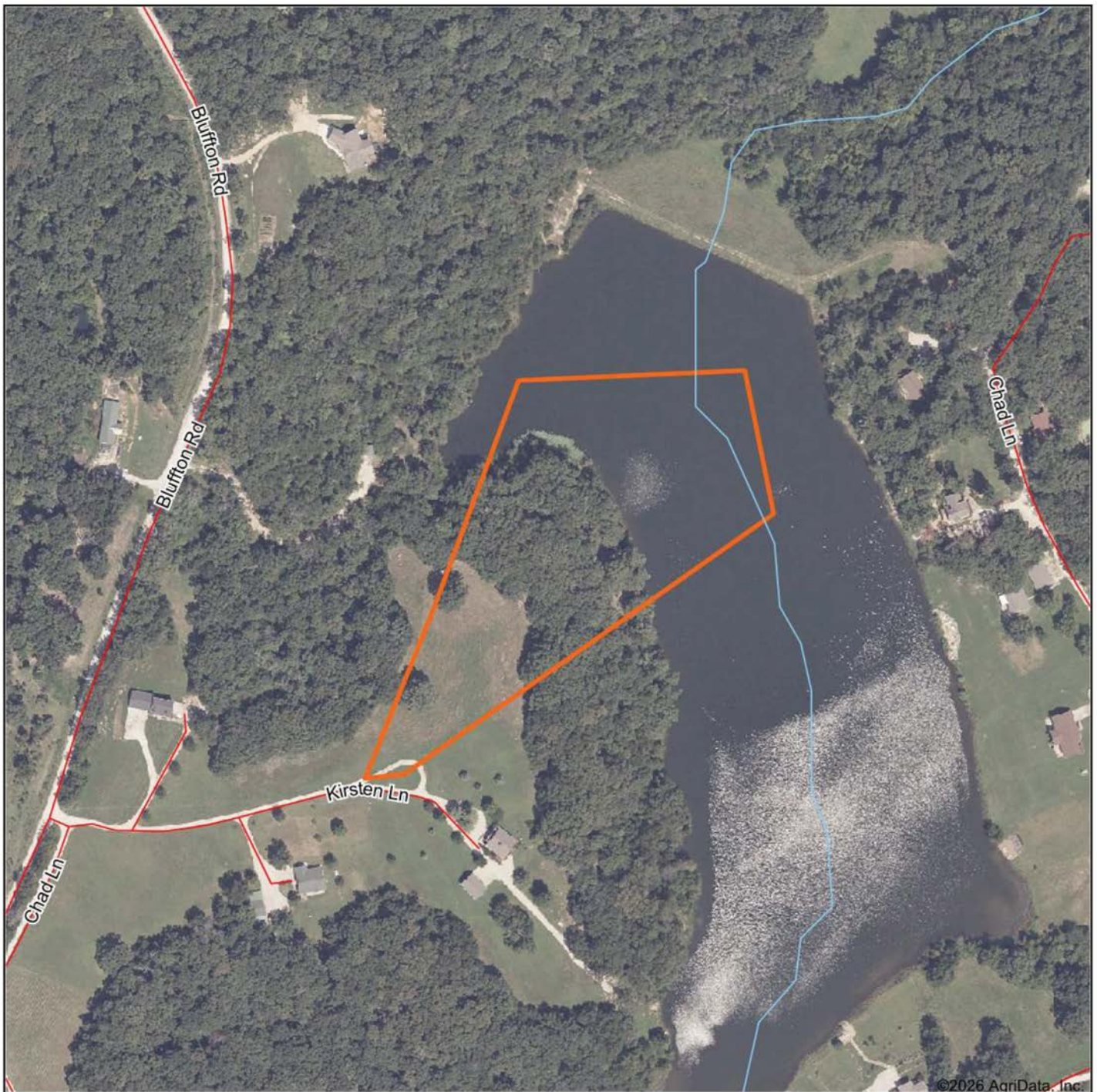
WOODED PRIVACY



QUIET COMMUNITY



AERIAL MAP



Boundary Center: 38° 45' 21.83, -91° 34' 25.55

0ft 290ft 581ft



Maps Provided By:



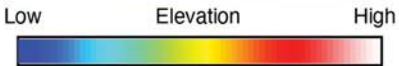
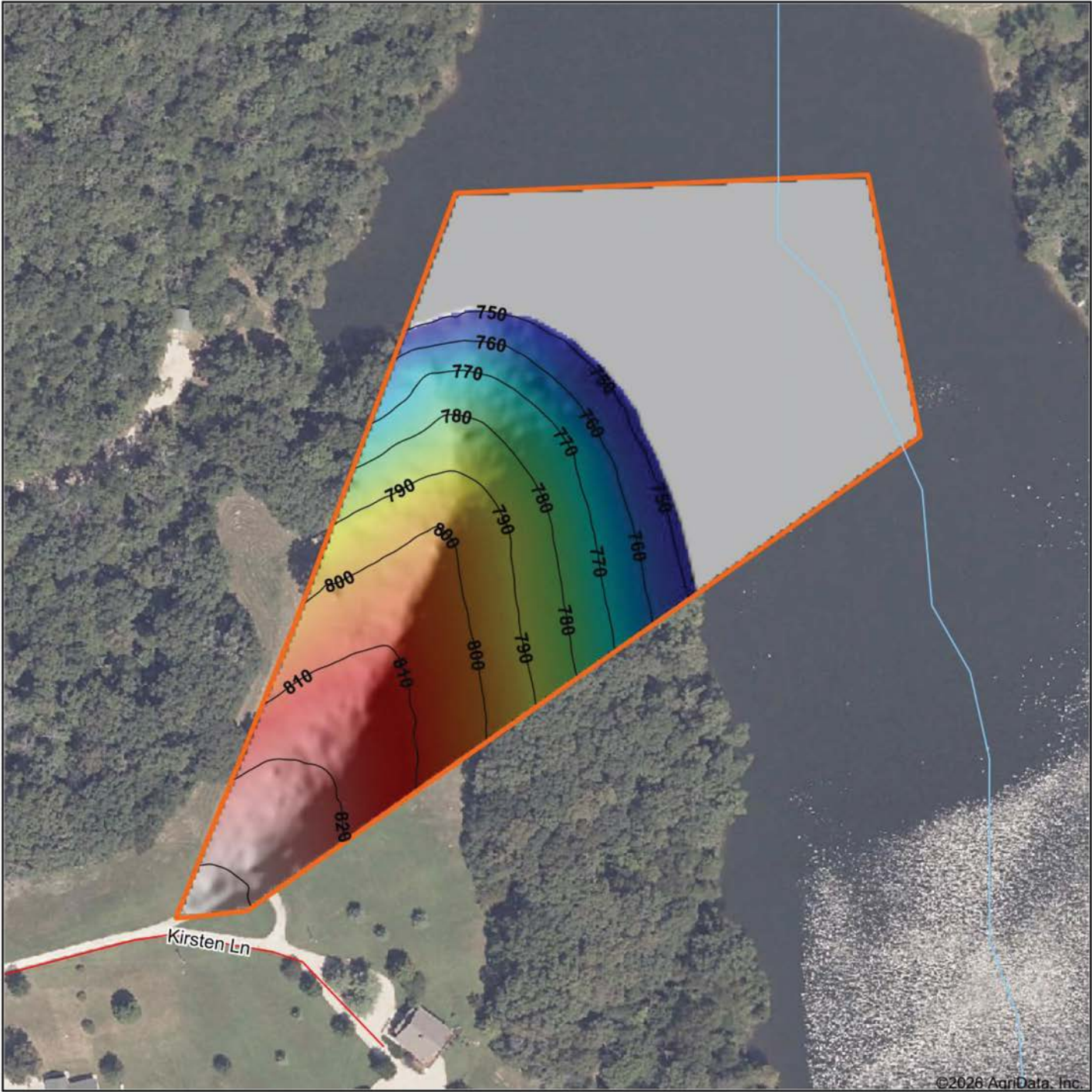
© AgriData, Inc. 2025 www.AgriDataInc.com

15-46N-6W
Montgomery County
Missouri

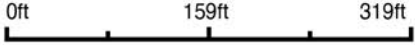


4/1/2026

HILLSHADE MAP



Source: USGS 1 meter dem
 Interval(ft): 10
 Min: 749.3
 Max: 833.4
 Range: 84.1
 Average: 772.7
 Standard Deviation: 26.57 ft



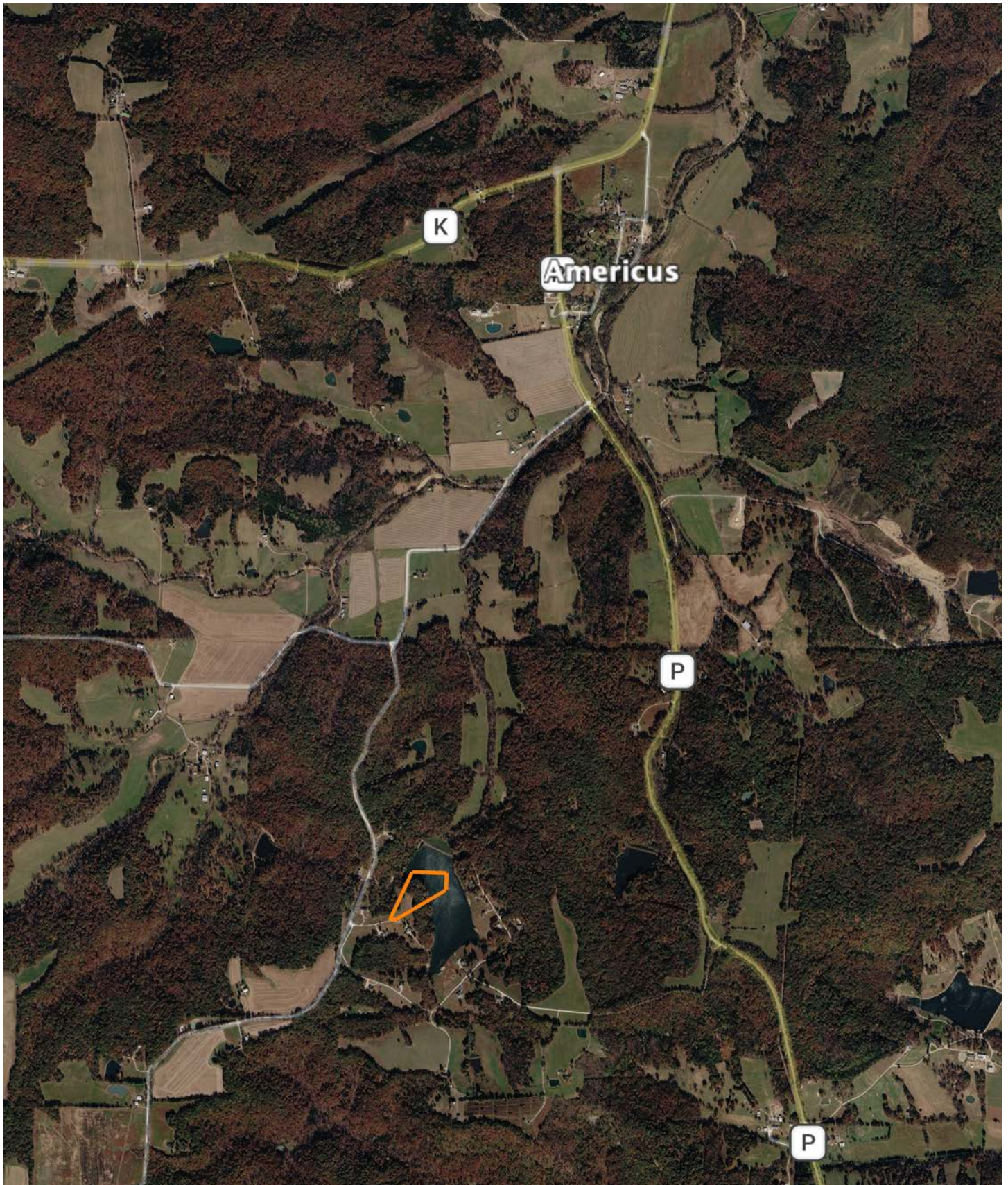
15-46N-6W
Montgomery County
Missouri

Boundary Center: 38° 45' 21.83, -91° 34' 25.55



Maps Provided By:
surety
 CUSTOMIZED ONLINE MAPPING
 © AgriData, Inc. 2025 www.AgriDataInc.com

OVERVIEW MAP



AGENT CONTACT

Jake Feldmann is a dedicated land agent at Midwest Land Group, dedicated to serving clients throughout Eastern Missouri and Western Illinois. Born and raised in Flint Hill, Missouri, Jake's roots run deep in the heartland. As a lifelong resident of Flint Hill, Jake's connection to the land is personal and profound. He grew up on a family farm, where the rhythms of nature and the art of cultivation were a part of daily life. This upbringing instilled in him not only a love for the land but also a wealth of knowledge and skills, from farming to hunting, that he is eager to pass on to his next generation—Carter, Clayton, and Klaira, alongside his wife, Kristal. Jake was drawn to land sales out of his love for the outdoors and his desire to serve others. His previous role managing a warehouse honed his people skills, preparing him for the intricacies of real estate transactions. What truly sets Jake apart is his firsthand experience with the land. Whether it's understanding the nuances of terrain through hunting or recognizing the potential of tillable ground for cash crops, Jake brings a unique perspective to his clients. Jake is not just an agent; he's a neighbor, a friend, and a steward of the land. His deep-seated passion for the land, coupled with his extensive local network and family support, make him an unparalleled choice for anyone looking to buy or sell property in the heartland. Choose Jake Feldmann to guide you through your land journey, where trust, expertise, and a shared love for the land come together to realize your property dreams.



JAKE FELDMANN

LAND AGENT

314.675.0899

JFeldmann@MidwestLandGroup.com



MidwestLandGroup.com

This property is being offered by Midwest Land Group, LLC. 913.674.8010. All information provided by Midwest Land Group, LLC or their agents was acquired from sources deemed accurate and reliable, however we do not warrant its accuracy or completeness. Midwest Land Group, LLC assumes no liability for error, omission or investment results. Midwest Land Group, LLC. Licensed in Alabama, Arkansas, Illinois, Indiana, Iowa, Kansas, Kentucky, Louisiana, Minnesota, Mississippi, Missouri, Montana, Nebraska, Ohio, Oklahoma, South Dakota, Tennessee, Texas, Wisconsin, and Wyoming.