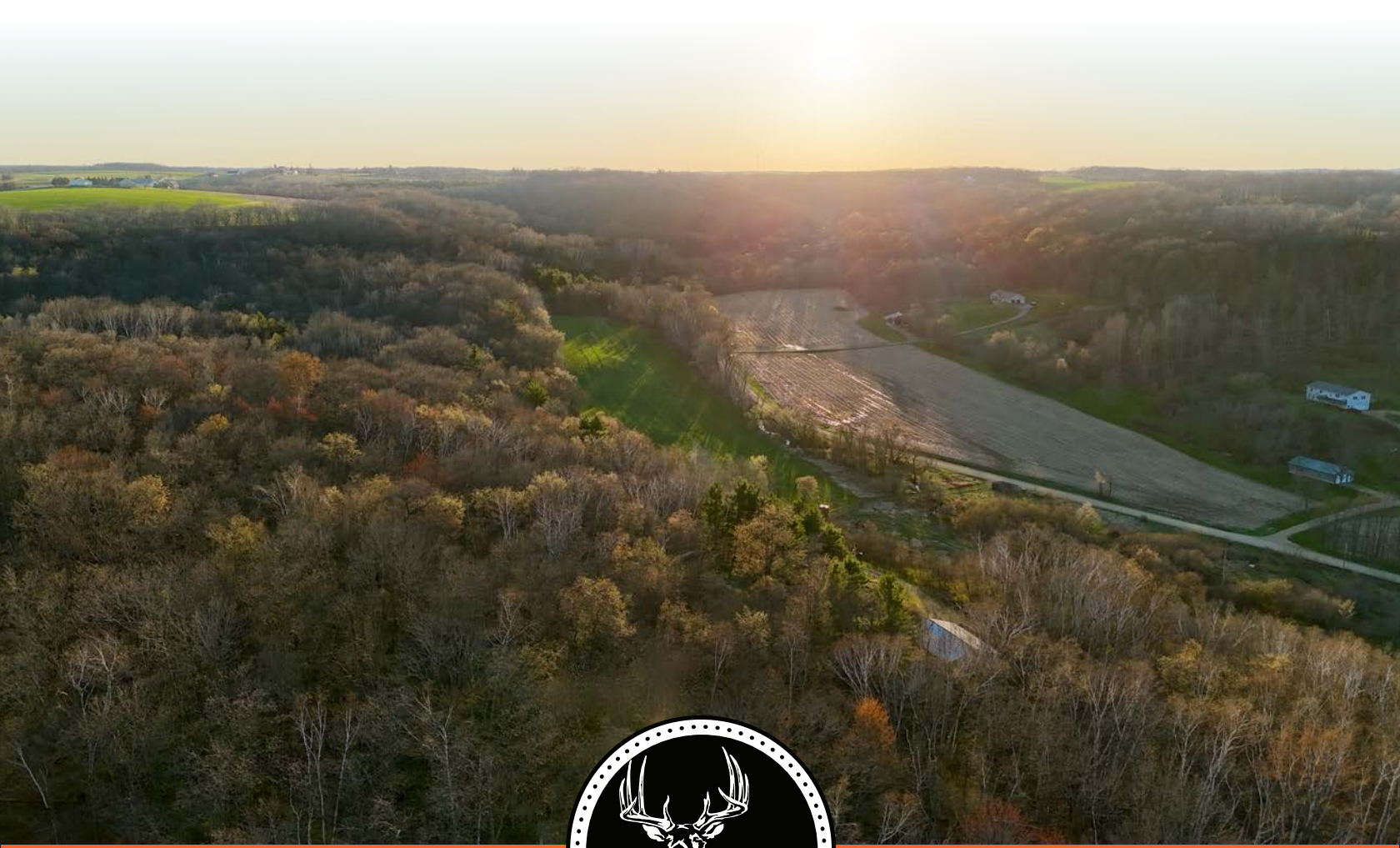


MIDWEST LAND GROUP PRESENTS

70.81 ACRES IN

MONROE COUNTY WISCONSIN



MidwestLandGroup.com

MIDWEST LAND GROUP IS HONORED TO PRESENT

70.81 +/- ACRES WITH BARABOO CREEK & BUILD SITE POTENTIAL

Discover the blend of recreation, seclusion, and potential on this 70.81 +/- acre property located at 29005 Missouri Avenue in Kendall, Wisconsin. Tucked away next to the Elroy Sparta Bike Trail, this diverse tract checks so many of the boxes.

Rolling timber ridges provide great bedding cover and travel corridors for wildlife, while approximately 5 acres of tillable ground offer a valuable food source to help attract and hold deer and turkey. The northern boundary is highlighted by a beautiful stretch of Baraboo Creek, flowing through a wetland bottom that enhances both habitat diversity and overall hunting appeal. Whether you're an avid hunter or simply appreciate the beauty of the land, this property delivers.

A gravel driveway leads you into the heart of the property, where you'll find a current pole barn, perfect for storing equipment, ATVs, or setting up a basecamp right away. Also on site is an existing foundation—ready for your vision, whether that's a cabin, home, or hunting retreat. A well and septic system are already in place, with testing and inspection completed in 2022, adding convenience and value for future improvements.

Properties offering this combination of water, access, and build potential are increasingly hard to find. Whether you're looking to hunt, invest, or build your dream getaway, this property is ready to bring your vision to life!

PROPERTY FEATURES

COUNTY: **MONROE** | STATE: **WISCONSIN** | ACRES: **70.81**

- 70.81 +/- acres of diverse recreational land
- Strong mix of timber ridges, bedding cover, and natural travel corridors
- Approximately 5 acres of tillable ground
- Baraboo Creek frontage along the northern boundary
- Wetland bottom creates excellent wildlife habitat
- Quality deer and turkey hunting
- Established gravel driveway
- Pole barn already in place for storage or basecamp setup
- Existing foundation
- Well and septic system on site (tested and inspected in 2022)

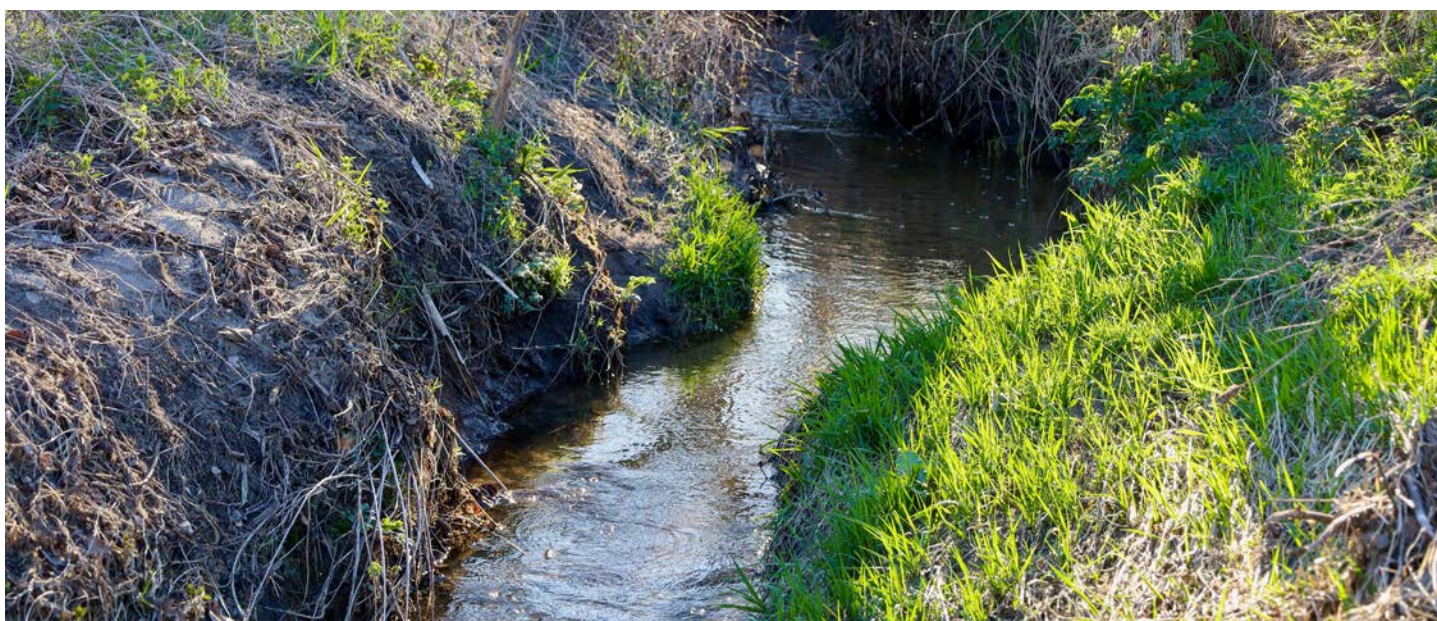
70.81 +/- ACRES OF DIVERSE LAND



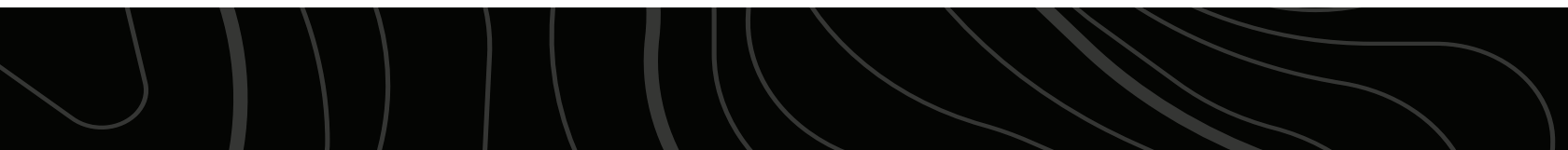
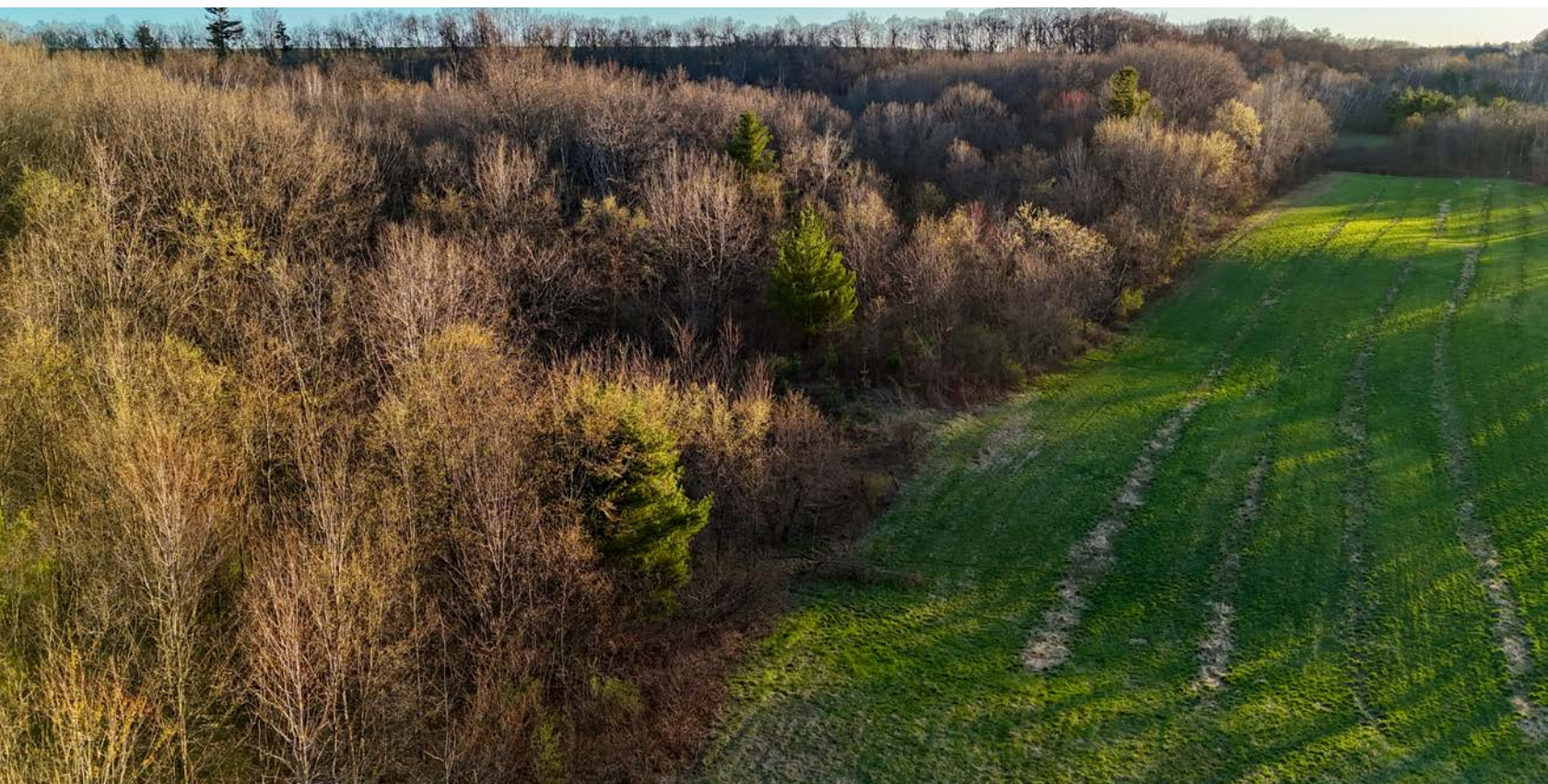
5 +/- ACRES OF TILLABLE GROUND



BARABOO CREEK FRONTAGE



WILDLIFE HABITAT



ESTABLISHED GRAVEL DRIVEWAY



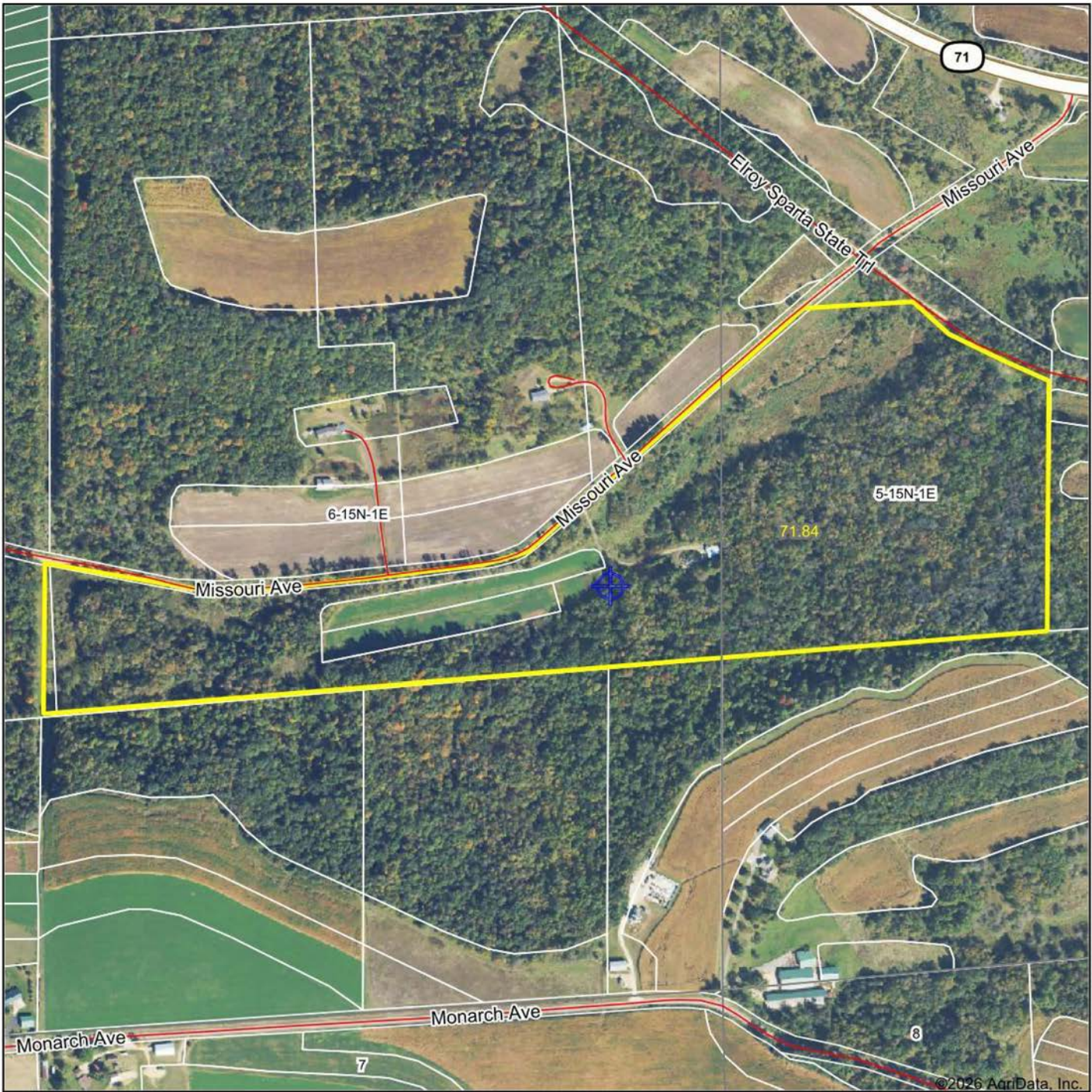
POLE BARN



ADDITIONAL PHOTOS

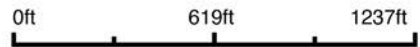


AERIAL MAP



©2026 AgriData, Inc.

Boundary Center: 43° 48' 16.13, -90° 24' 54.19



Maps Provided By:



© AgriData, Inc. 2025 www.AgriDataInc.com

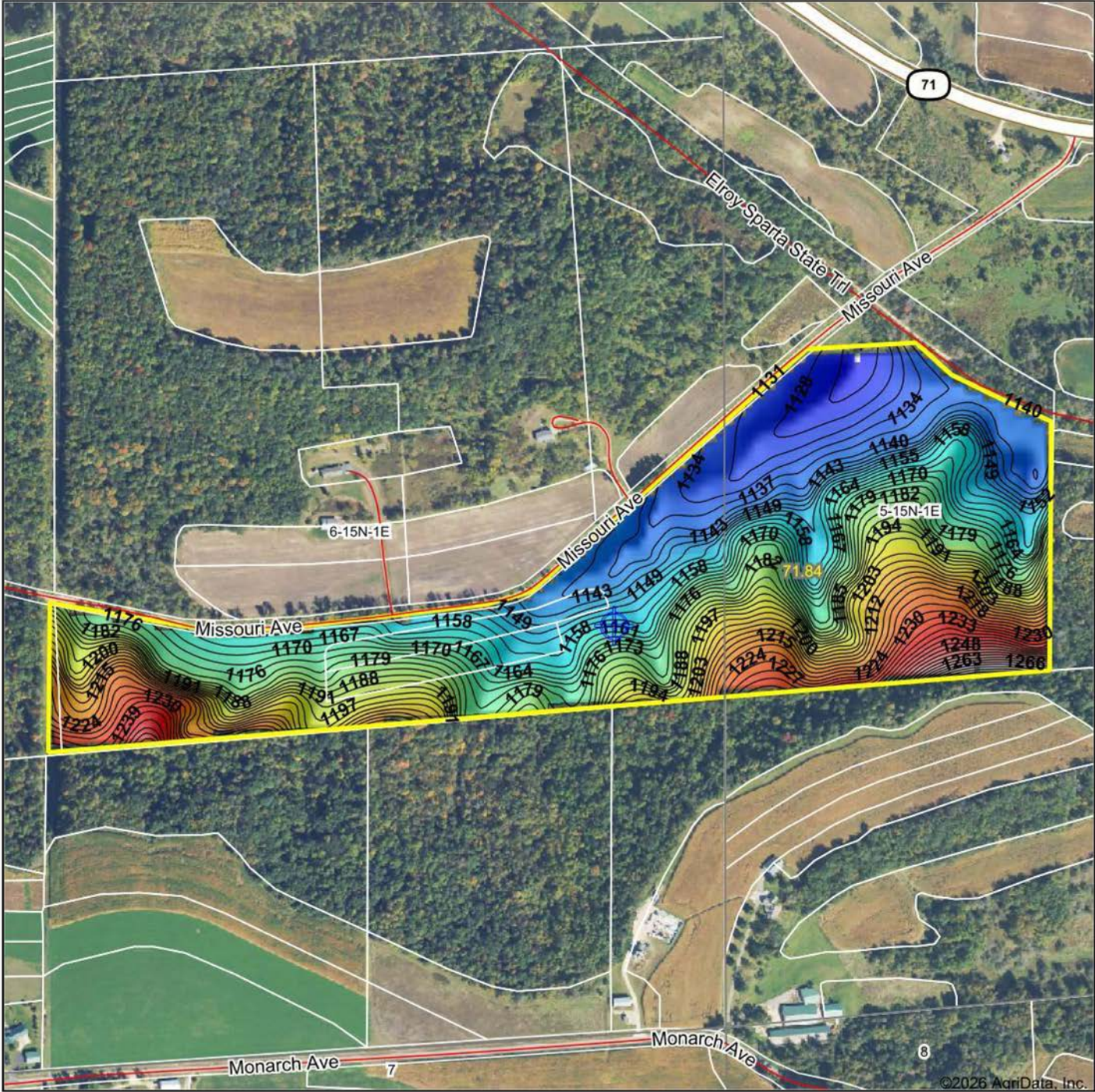
6-15N-1E
Monroe County
Wisconsin



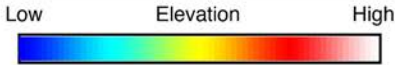
4/16/2026

Field borders provided by Farm Service Agency as of 5/21/2008.

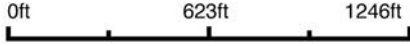
HILLSHADE MAP



©2026 AgriData, Inc.



Source: USGS 10 meter dem
 Interval(ft): 3
 Min: 1,120.9
 Max: 1,297.1
 Range: 176.2
 Average: 1,177.7
 Standard Deviation: 36.09 ft

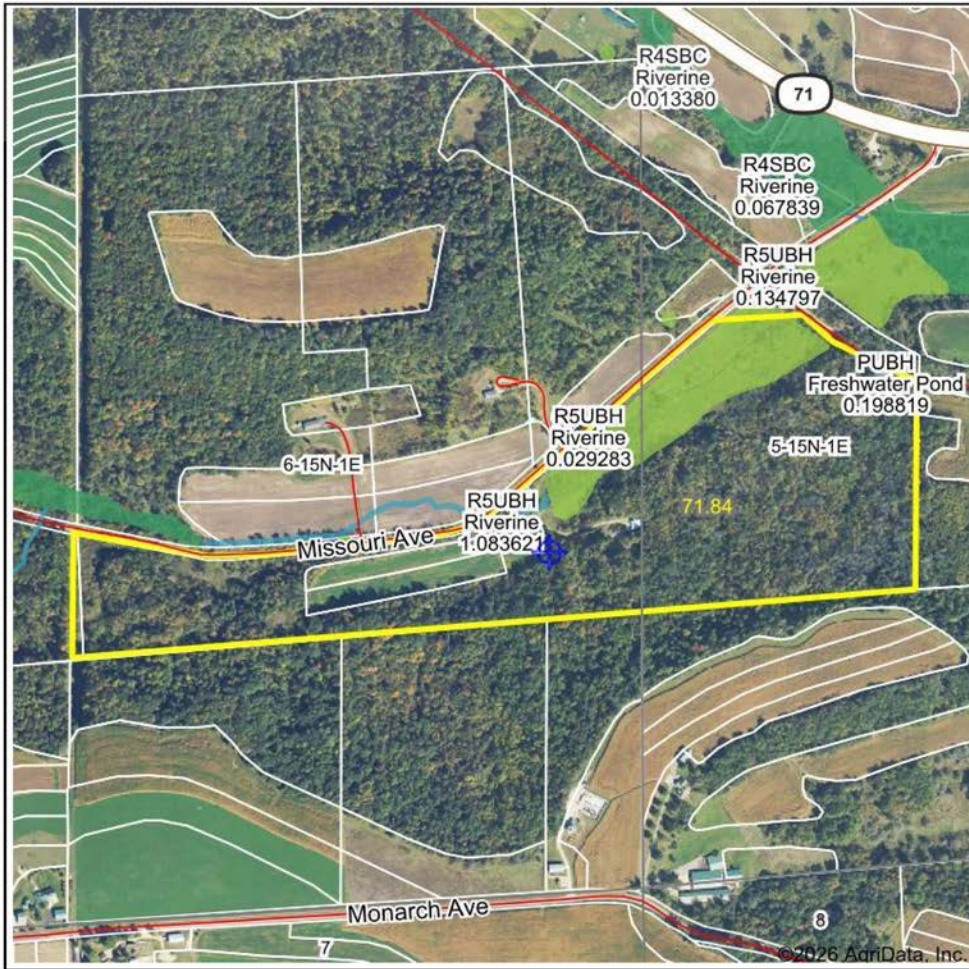


6-15N-1E
Monroe County
Wisconsin

Boundary Center: 43° 48' 16.13, -90° 24' 54.19

Maps Provided By:
surety
 CUSTOMIZED ONLINE MAPPING
 © AgriData, Inc. 2025 www.AgriDataInc.com
 Field borders provided by Farm Service Agency as of 5/21/2008.

WETLANDS MAP



State: **Wisconsin**
 Location: **6-15N-1E**
 County: **Monroe**
 Township: **Glendale**
 Date: **4/16/2026**



Maps Provided By:
surety
 CUSTOMIZED ONLINE MAPPING
 © AgriData, Inc. 2025 www.AgriDataInc.com

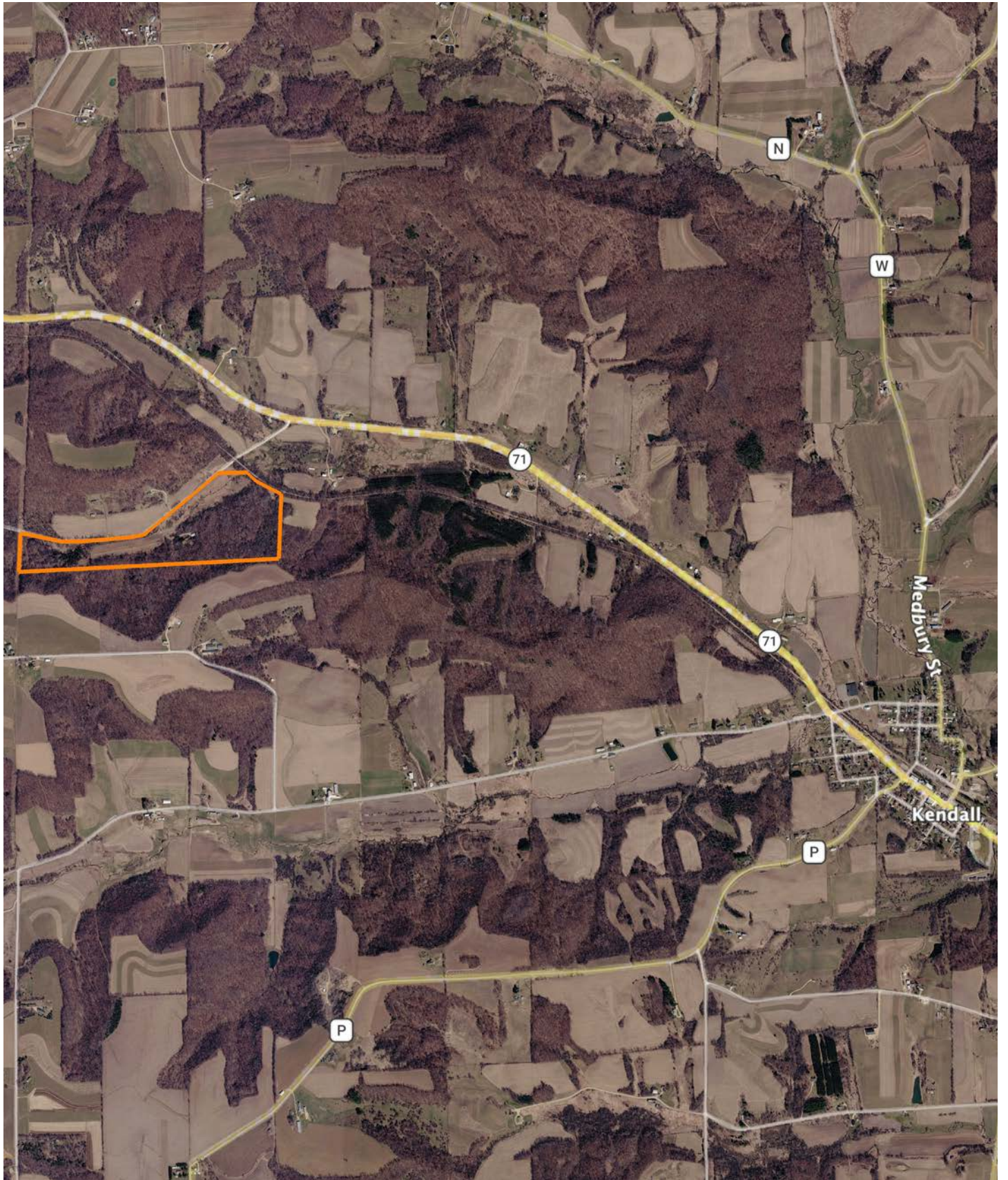


0ft 950ft 1900ft

| Classification Code | Type | Acres |
|---------------------|-----------------------------|-------|
| PEM1A | Freshwater Emergent Wetland | 8.90 |
| R5UBH | Riverine | 0.28 |
| PUBH | Freshwater Pond | 0.20 |
| PEM1C | Freshwater Emergent Wetland | 0.03 |
| | Total Acres | 9.41 |

Data Source: National Wetlands Inventory website. U.S. DoI, Fish and Wildlife Service, Washington, D.C. <http://www.fws.gov/wetlands/>

OVERVIEW MAP



AGENT CONTACT

Jordan is a dedicated, hard-working land agent passionate about helping clients navigate the land market in Southern Wisconsin. Growing up in Waukesha County, Jordan has a deep appreciation for the area's unique charm and potential. Ever since he could put on his own boots, Jordan has been hunting and helping manage his family farms in Grant and Crawford counties to produce year after year. Traveling across the different landscapes across the state has allowed him to appreciate all of the landscapes and markets the state has to offer.

Graduating from Marquette University with his Master's in Management and playing 5 years of Division I lacrosse has instilled the importance of teamwork into his approach to the real estate business. After spending 2 years at the Midwest Land Group office helping over 100 agents across 13 states build their businesses, he is ready to get back to supporting the state that holds such a large place in his heart. Being a part of hundreds of transactions through the home office gave Jordan a deep accountability in the fact that all parties involved in a transaction must fully own their roles for the best outcome possible and is never afraid to go above and beyond for his clients to ensure they achieve their goals.

In his spare time, Jordan enjoys spending time with his wife Elaina. They enjoy diving deeper into their faith life through their local church and organizations such as Young Life and FCA. When he isn't spending time with his family, you'll likely find Jordan working out with his friends or spending some time out on the open water fishing. If you're in the market for recreational, farmland, or investment properties in Wisconsin, be sure to give Jordan a call!



JORDAN SCHMID

LAND AGENT

262.737.8823

JordanSchmid@MidwestLandGroup.com



MidwestLandGroup.com

This property is being offered by Midwest Land Group, LLC. 913.674.8010. All information provided by Midwest Land Group, LLC or their agents was acquired from sources deemed accurate and reliable, however we do not warrant its accuracy or completeness. Midwest Land Group, LLC assumes no liability for error, omission or investment results. Midwest Land Group, LLC. Licensed in Alabama, Arkansas, Illinois, Indiana, Iowa, Kansas, Kentucky, Louisiana, Minnesota, Mississippi, Missouri, Montana, Nebraska, Ohio, Oklahoma, South Dakota, Tennessee, Texas, Wisconsin, and Wyoming.