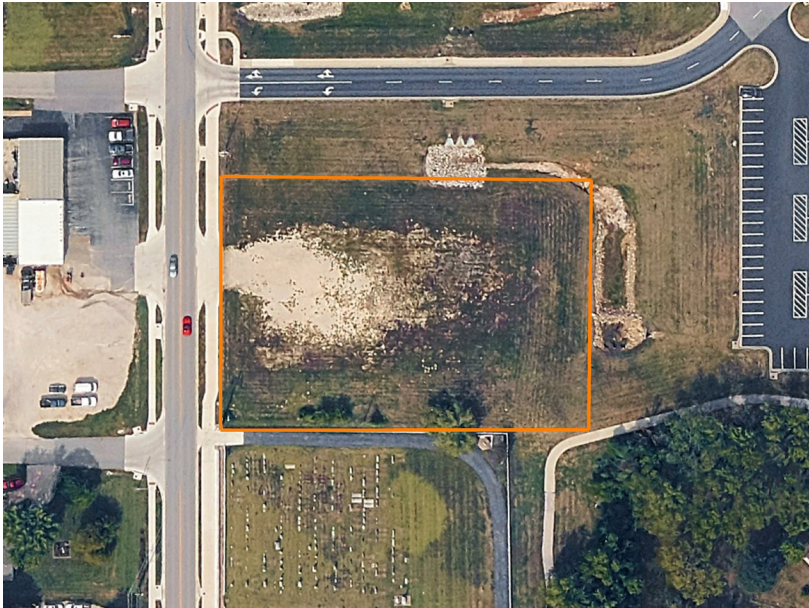


LAND FOR SALE

1.34 ACRE COMMERCIAL LOT FOR SALE EXCEPTIONAL LOCATION IN LOUISBURG

COUNTY: **MIAMI**
STATE: **KANSAS**
ACRES: **1.34**



PROPERTY FEATURES

- 1.34 acres in Louisburg, Kansas
- Zoned for commercial use, suitable for a variety of businesses
- Prime location with easy access to major roads and highways
- In the path of growth
- High-traffic area with great visibility from Metcalf Road
- Close proximity to Louisburg Schools
- Conveniently located close to 68 Hwy & 69 Hwy
- Flat, cleared land ready for development or construction
- Great investment opportunity
- Utilities available at the site

For more information, contact:

DONNIE THOMAS, Land Agent

913.396.6245 | DThomas@MidwestLandGroup.com

MidwestLandGroup.com

