

MIDWEST LAND GROUP PRESENTS



MADISON COUNTY, AR

37.1 ACRES



MidwestLandGroup.com

MIDWEST LAND GROUP IS HONORED TO PRESENT

BUILDABLE ACREAGE & GREAT HUNTING IN A PRIME MADISON COUNTY LOCATION

If you've been looking for a manageable piece of ground that checks a lot of boxes, this 37 +/- acre tract in Madison County deserves a hard look. Here, you have a great location, hunting potential, and timber value. Nearby utilities offer opportunities for future improvement as well. This property is being split from a larger parcel, with the seller providing ingress/egress along with utility easements, making it a very workable setup from day one. Utilities are along County Road 7670. Electric service is provided by Ozarks Electric, and water is supplied by Madison County. You've also got the option for Ozarksgo high-speed fiber internet.

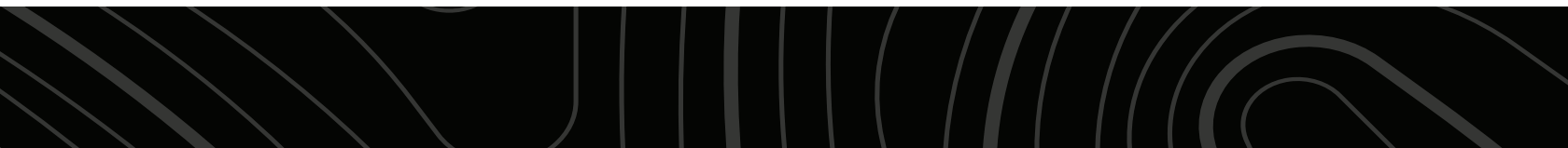
The land itself sets up extremely well. You've got gently sloped benches throughout the property, along with a large, usable flat on the eastern side that really opens up your options for a homesite, cabin, or multiple food plot locations. A wet-weather creek runs through the northwest corner of the tract, and there's also a pond already in place. These are good features for both wildlife and recreation.

From a hunting standpoint, the property creates a strong base. The natural benches are ideal travel corridors for

deer, allowing them to move without using much energy while scent-checking during the rut. Turkeys will use these same areas for feeding, strutting, and travel, and the area is known to produce the occasional black bear as well. Timber is another strong point here. White oak is the dominant species, with some red oak and hickory mixed in. A good portion of the white oak and some of the red oak is marketable, giving you immediate or future return potential.

Location is the major highlight. The property sits just north of Wesley and just south of Highway 295. You're less than 30 minutes from East Fayetteville, just a little over a half hour to the University of Arkansas, and under 30 minutes to Huntsville. It's close enough to be convenient, but far enough out to feel like you've actually gotten away.

Whether you're looking for a hunting tract, a place to build, or a combination of both, this property offers just that, and it's wrapped up in a convenient location. Showings are by appointment only, so give Land Agent Chris Shadrick a call to schedule your private showing.



PROPERTY FEATURES

PRICE: **\$156,400** | COUNTY: **MADISON** | STATE: **ARKANSAS** | ACRES: **37.1**

- Great location
- Utilities along CR 7670
- Potential for Ozarksgo High-Speed Internet
- Gently sloped terrain
- Large flat along eastern boundary
- Pond and wet-weather creek
- Deer & turkey
- Marketable White Oak timber
- Less than 30 minutes to Fayetteville
- Less than 30 minutes to Huntsville
- Just over half an hour from the University of Arkansas

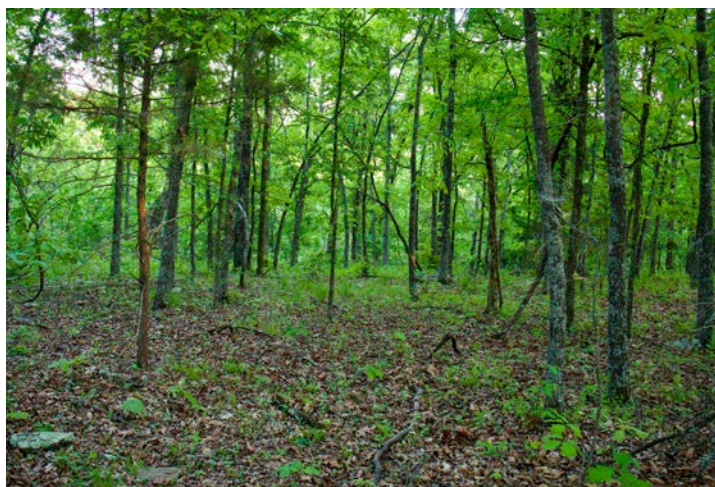
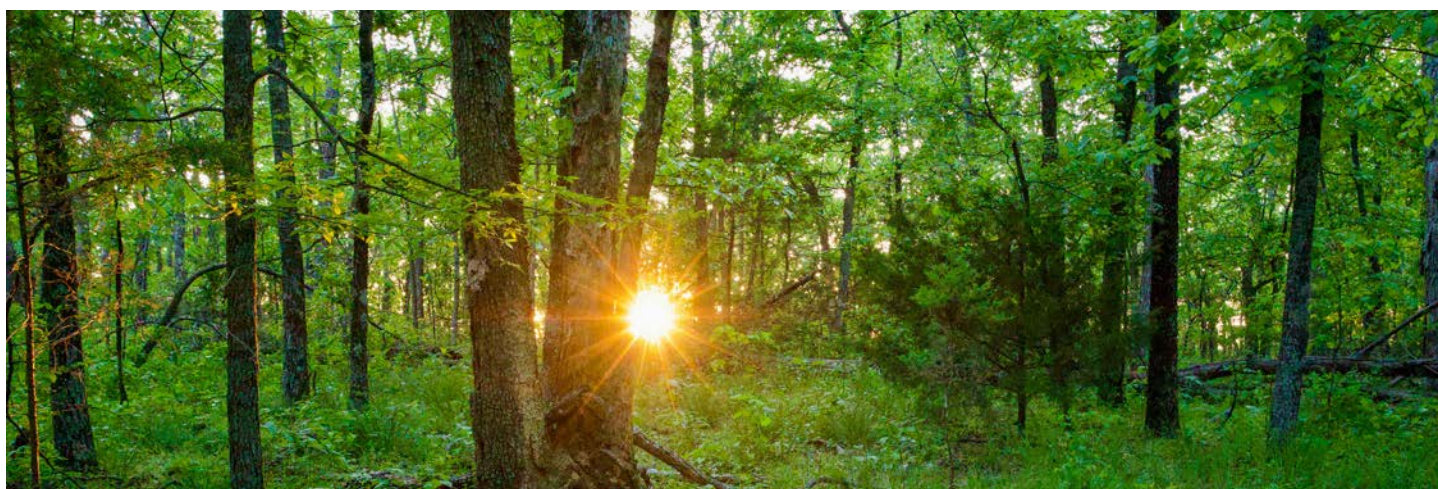


BOUNDARY LINES ARE APPROXIMATE

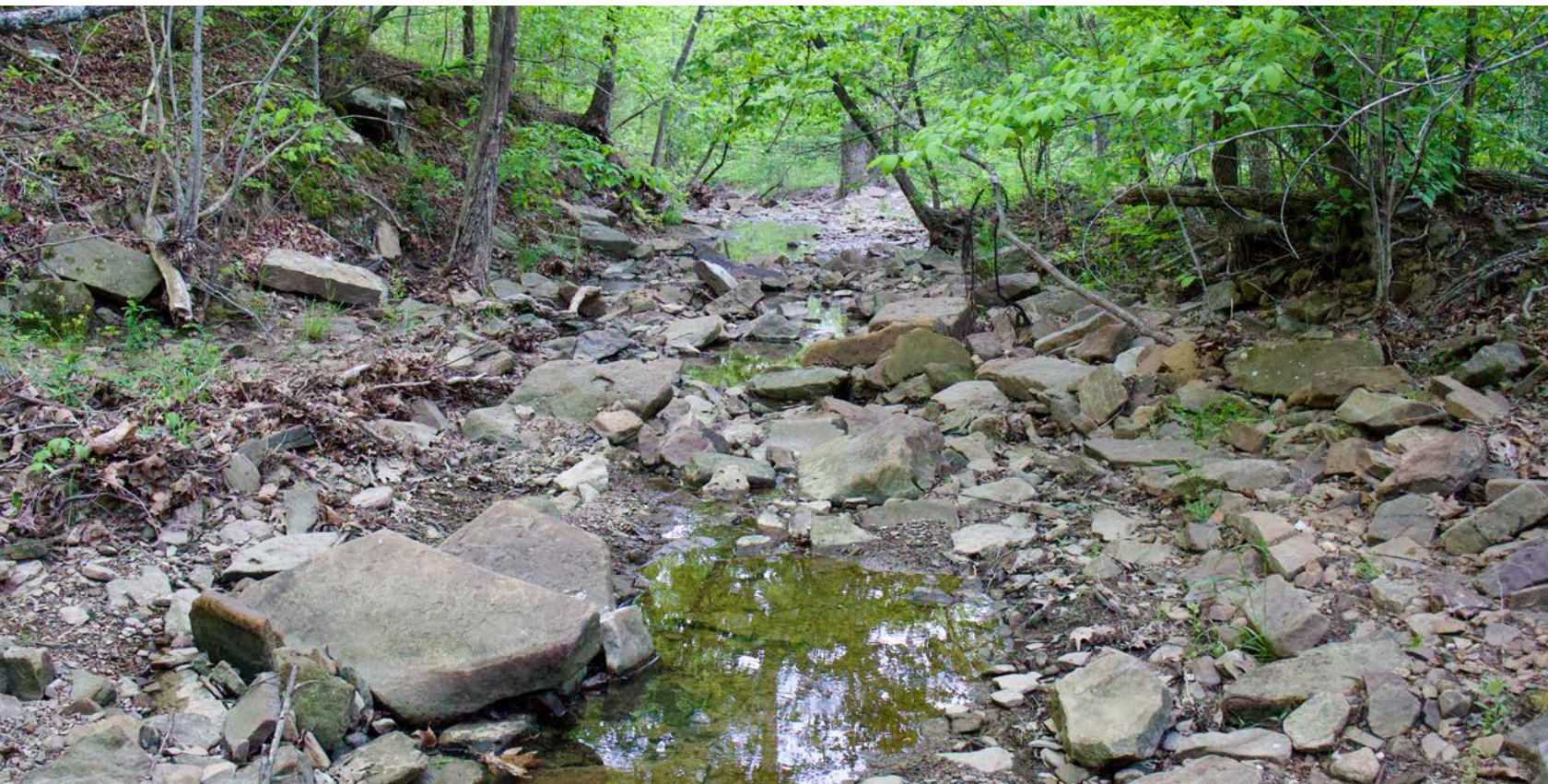
GENTLY SLOPED TERRAIN



LARGE FLAT ALONG EASTERN BOUNDARY



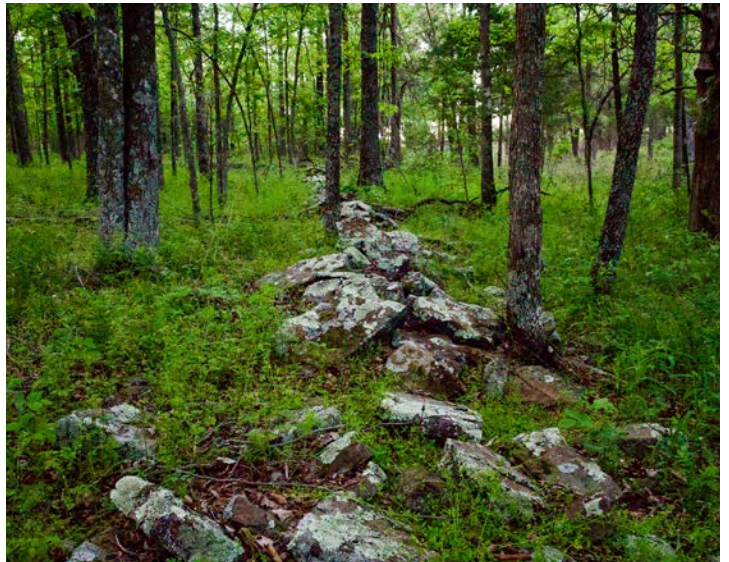
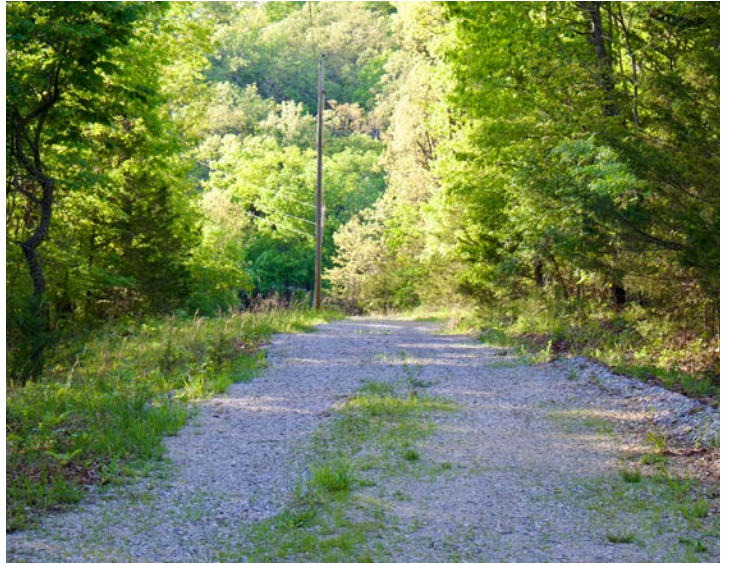
POND AND WET-WEATHER CREEK



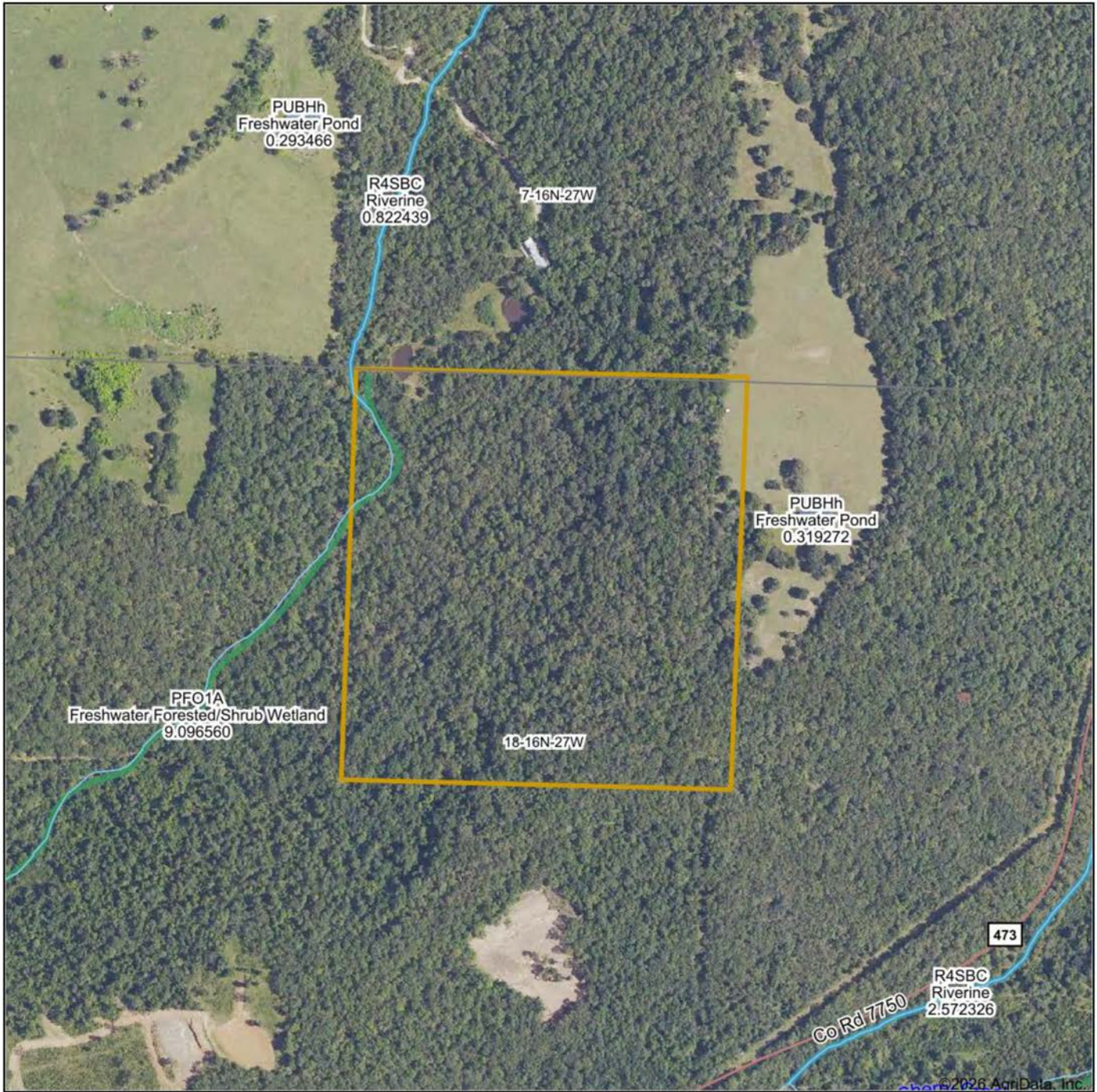
MARKETABLE WHITE OAK TIMBER



ADDITIONAL PHOTOS



AERIAL MAP



Boundary Center: 36° 3' 44.29, -93° 53' 5.68



Maps Provided By:



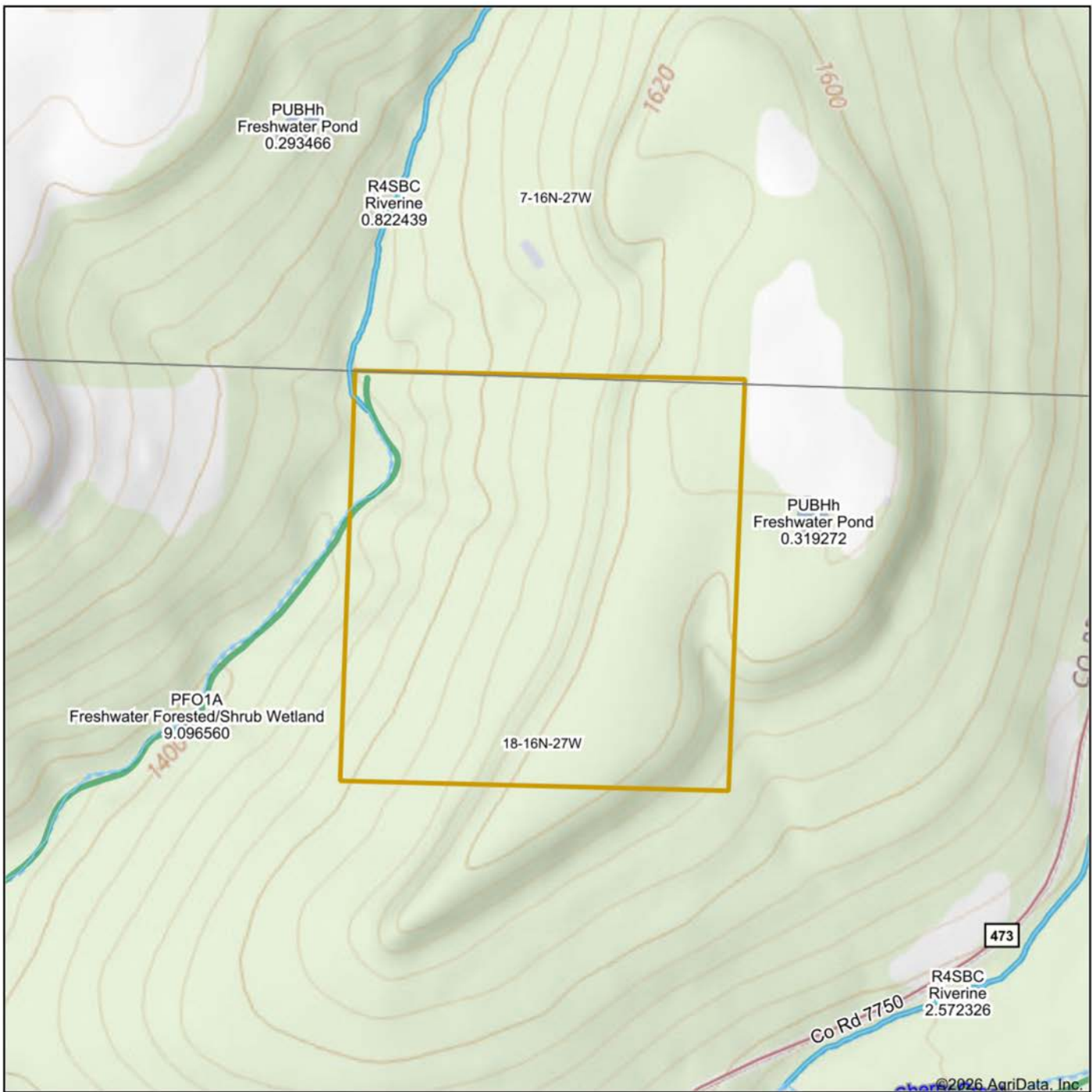
© AgriData, Inc. 2025 www.AgriDataInc.com

18-16N-27W
Madison County
Arkansas



4/21/2026

TOPOGRAPHY MAP



Map Center: 36° 3' 45.31, -93° 53' 5.53

0ft 500ft 1001ft

18-16N-27W
Madison County
Arkansas



4/21/2026



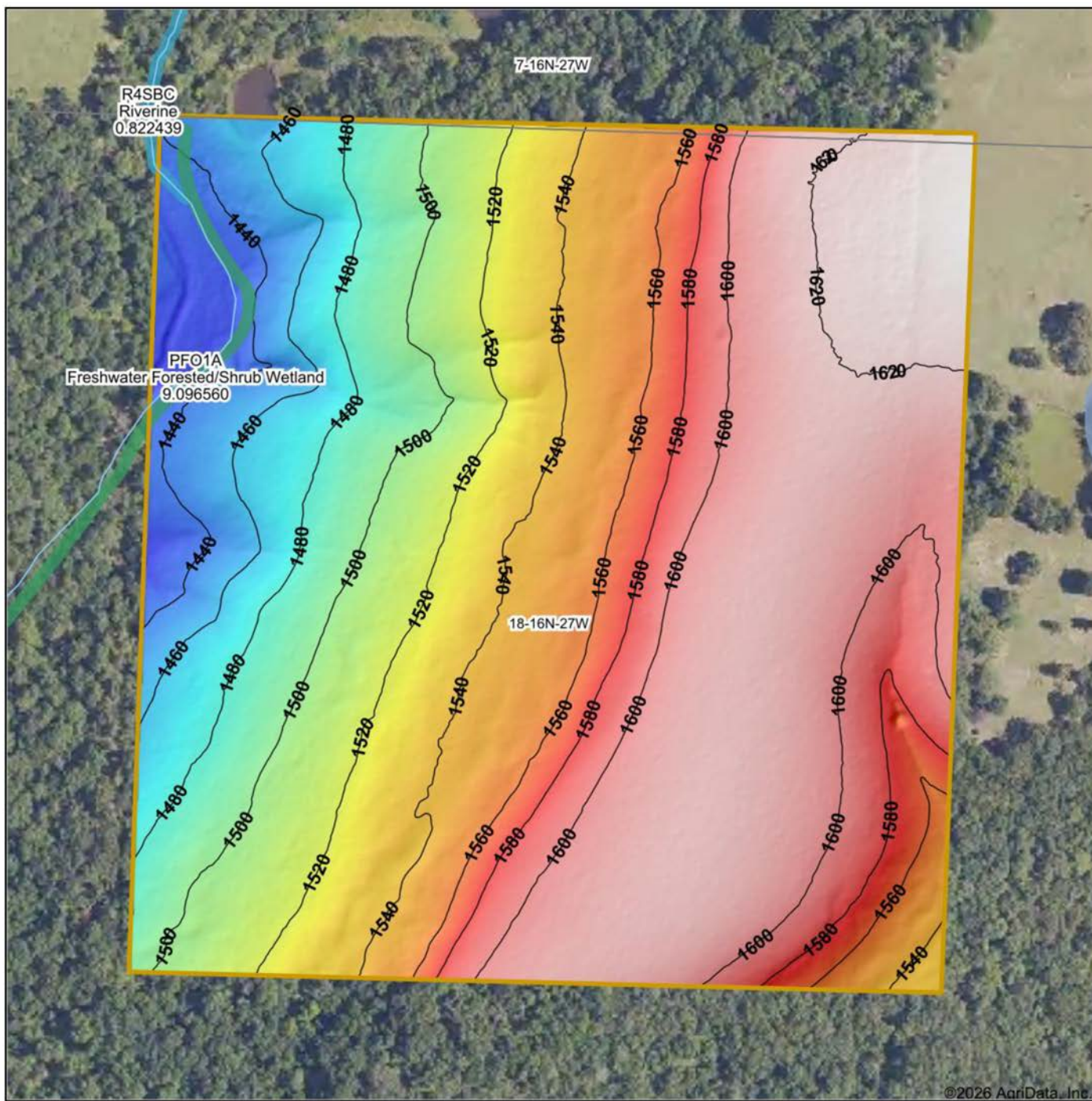
Maps Provided By:



© AgriData, Inc. 2025

www.AgriDataInc.com

HILLSHADE MAP



©2026 AgriData, Inc.

Low Elevation High

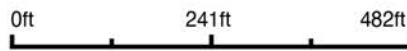


Maps Provided By:



AgriData, Inc. 2025 www.AgriDataInc.com

Source: USGS 1 meter dem
 Interval(ft): 20
 Min: 1,420.6
 Max: 1,628.8
 Range: 208.2
 Average: 1,547.3
 Standard Deviation: 57.68 ft

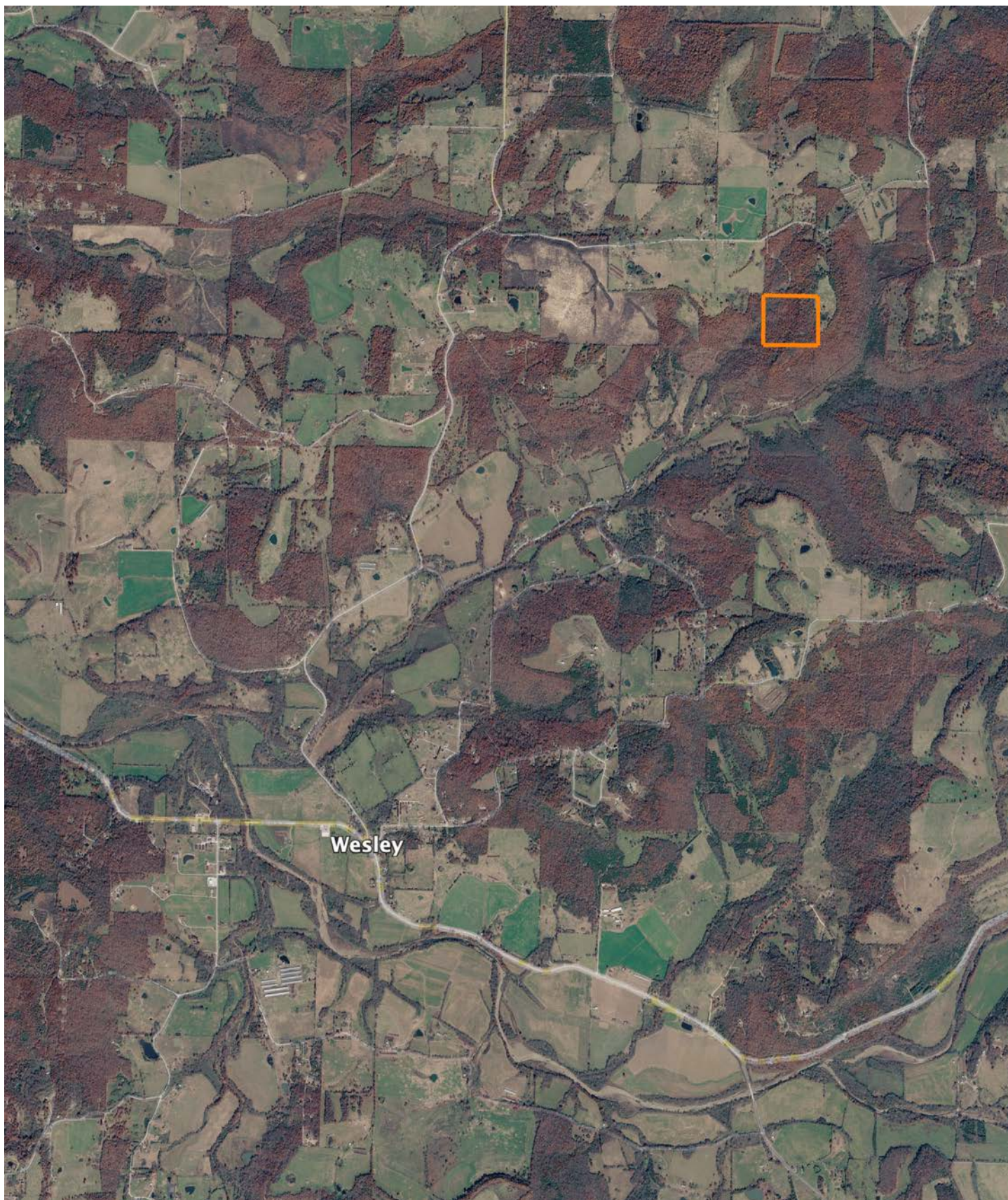


4/21/2026

18-16N-27W
Madison County
Arkansas

Boundary Center: 36° 3' 44.29, -93° 53' 5.68

OVERVIEW MAP



AGENT CONTACT

Chris Shadrick, an esteemed land agent at Midwest Land Group, seamlessly merges family values with a profound understanding of land sales. Proudly calling Elkins, Arkansas, home alongside his lovely wife, Nikki, and their children, Payten, Axel, and Boone, Chris embodies integrity and dedication in serving his clients.

Hailing from Fayetteville, Arkansas, Chris's roots run deep within the region he passionately serves. His extensive background in automotive sales and management equips him with invaluable skills in relationship building and maintenance—skills cultivated from years of learning the true value of hard work.

Driven by his love for the outdoors and a desire to forge genuine connections with his clients, Chris's transition to land sales was a natural progression. His profound connection to the land stems from his passion for public land bowhunting, granting him unparalleled insights into wildlife behavior and terrain intricacies.

As an ordained minister and active member of New Beginnings Baptist Church, Chris exemplifies integrity and values in every client interaction. Choose Chris Shadrick as your trusted guide in your land journey, where unwavering family values, integrity, and expertise converge to transform your dreams into reality.



CHRIS SHADRICK

LAND AGENT

479.487.1647

CShadrick@MidwestLandGroup.com



MidwestLandGroup.com

This property is being offered by Midwest Land Group, LLC. 913.674.8010. All information provided by Midwest Land Group, LLC or their agents was acquired from sources deemed accurate and reliable, however we do not warrant its accuracy or completeness. Midwest Land Group, LLC assumes no liability for error, omission or investment results. Midwest Land Group, LLC. Licensed in Alabama, Arkansas, Illinois, Indiana, Iowa, Kansas, Kentucky, Louisiana, Minnesota, Mississippi, Missouri, Montana, Nebraska, Ohio, Oklahoma, South Dakota, Tennessee, Texas, Wisconsin, and Wyoming.