

MIDWEST LAND GROUP PRESENTS

40 ACRES IN

LOGAN COUNTY ARKANSAS



MidwestLandGroup.com

MIDWEST LAND GROUP IS HONORED TO PRESENT

40 +/- HUNTING PROPERTY CLOSE TO BLUE MOUNTAIN LAKE

Situated one mile north of Blue Mountain Lake on Hog Thief Valley Road, this 40 +/- acre timber tract is an ideal location for hunting enthusiasts. The property features a predominance of hardwood timber, interspersed with pine and cedar. A cleared area is suitable for establishing a camper setup or a permanent residence. Established trails extend east and west from the clearing, providing convenient access to the majority of the acreage. Several stand sites are already prepared for use.

The property boasts varied topography and provides impressive views of the Ouachita Mountains to the south. Complete with a private, gated entrance, this parcel fulfills the requirements for both a premier hunting tract and a secluded homesite.



PROPERTY FEATURES

COUNTY: **LOGAN** | STATE: **ARKANSAS** | ACRES: **40**

- Close to Blue Mountain Lake
- Deer, turkey, and bear
- Hardwood timber
- Trail system
- Stand locations
- Camper or home site
- Gated entrance
- 15 minutes to Magazine
- 15 minutes to Waveland Park
- 40 minutes to Mount Magazine State Park



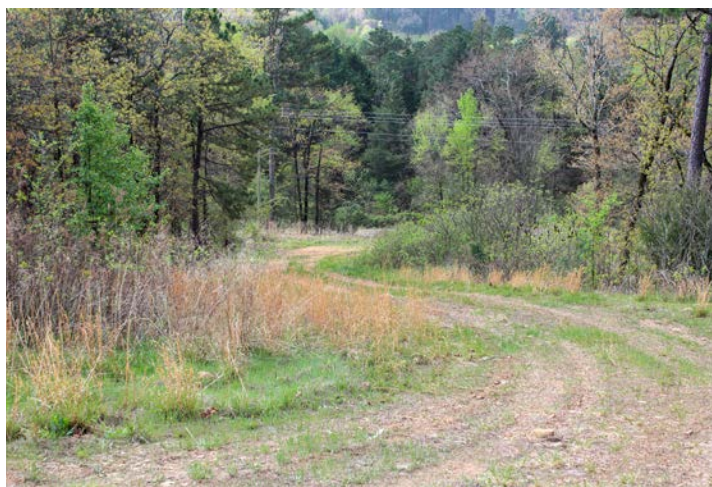
HARDWOOD TIMBER



GATED ENTRANCE



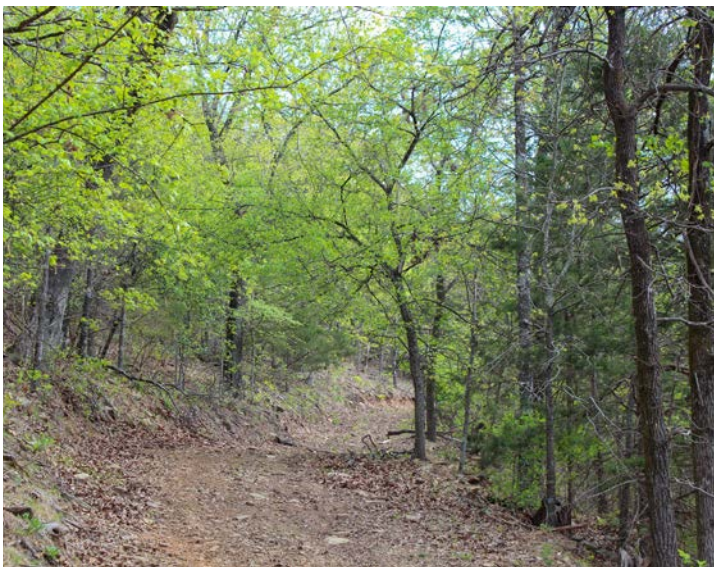
TRAIL SYSTEM



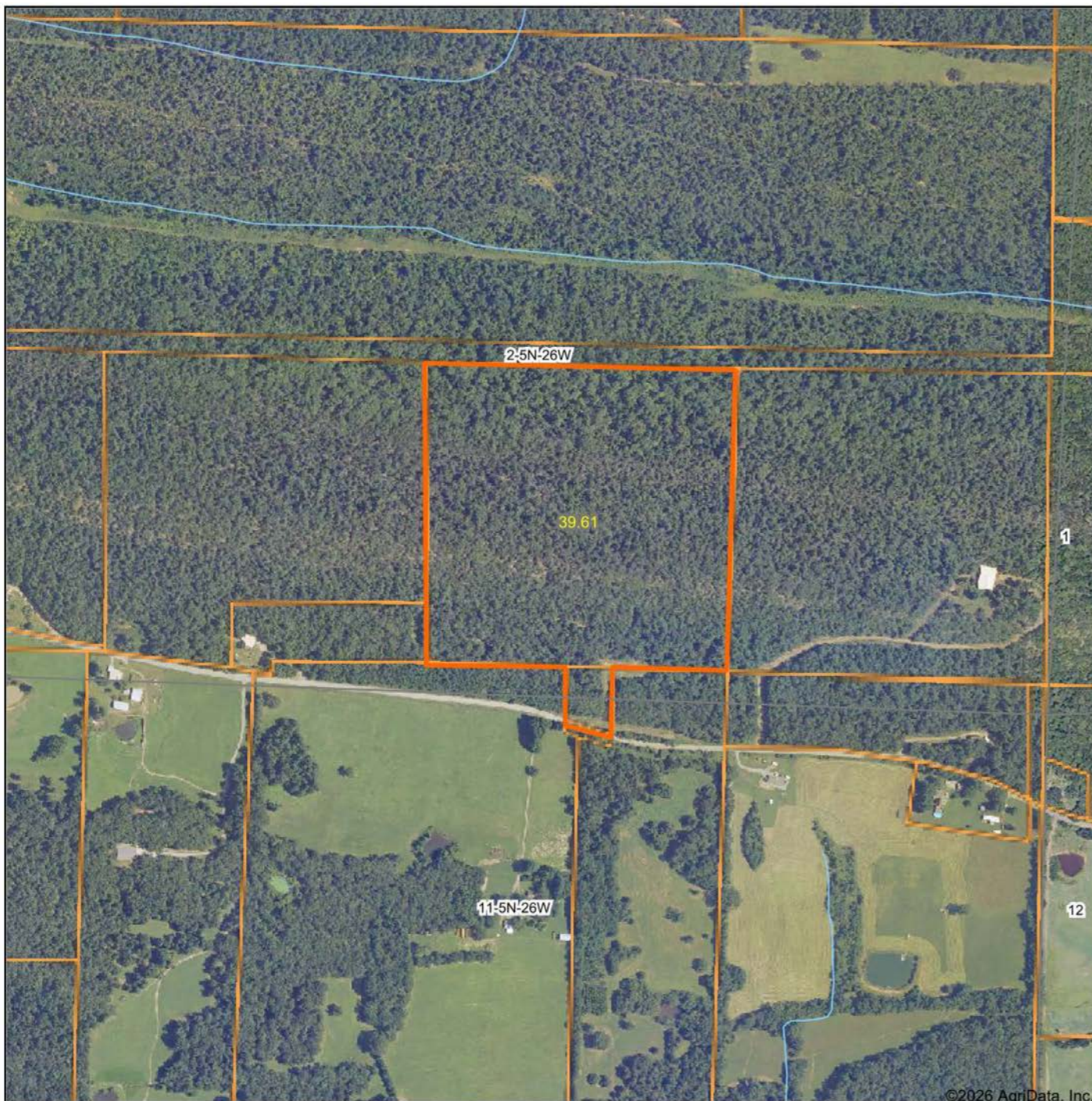
CAMPER OR HOMESITE



ADDITIONAL PHOTOS



AERIAL MAP



Boundary Center: 35° 7' 17.06, -93° 43' 56.09

0ft 667ft 1335ft



Maps Provided By:



© AgriData, Inc. 2025 www.AgriDataInc.com

2-5N-26W
Logan County
Arkansas



3/29/2026

TOPOGRAPHY MAP



©2026 AgriData, Inc.



Maps Provided By:
surety
 CUSTOMIZED ONLINE MAPPING
 © AgriData, Inc. 2025 www.AgriDataInc.com

Source: USGS 1 meter dem
 Interval(ft): 30.0
 Min: 506.8
 Max: 867.1
 Range: 360.3
 Average: 741.1
 Standard Deviation: 91.44 ft

0ft 307ft 613ft

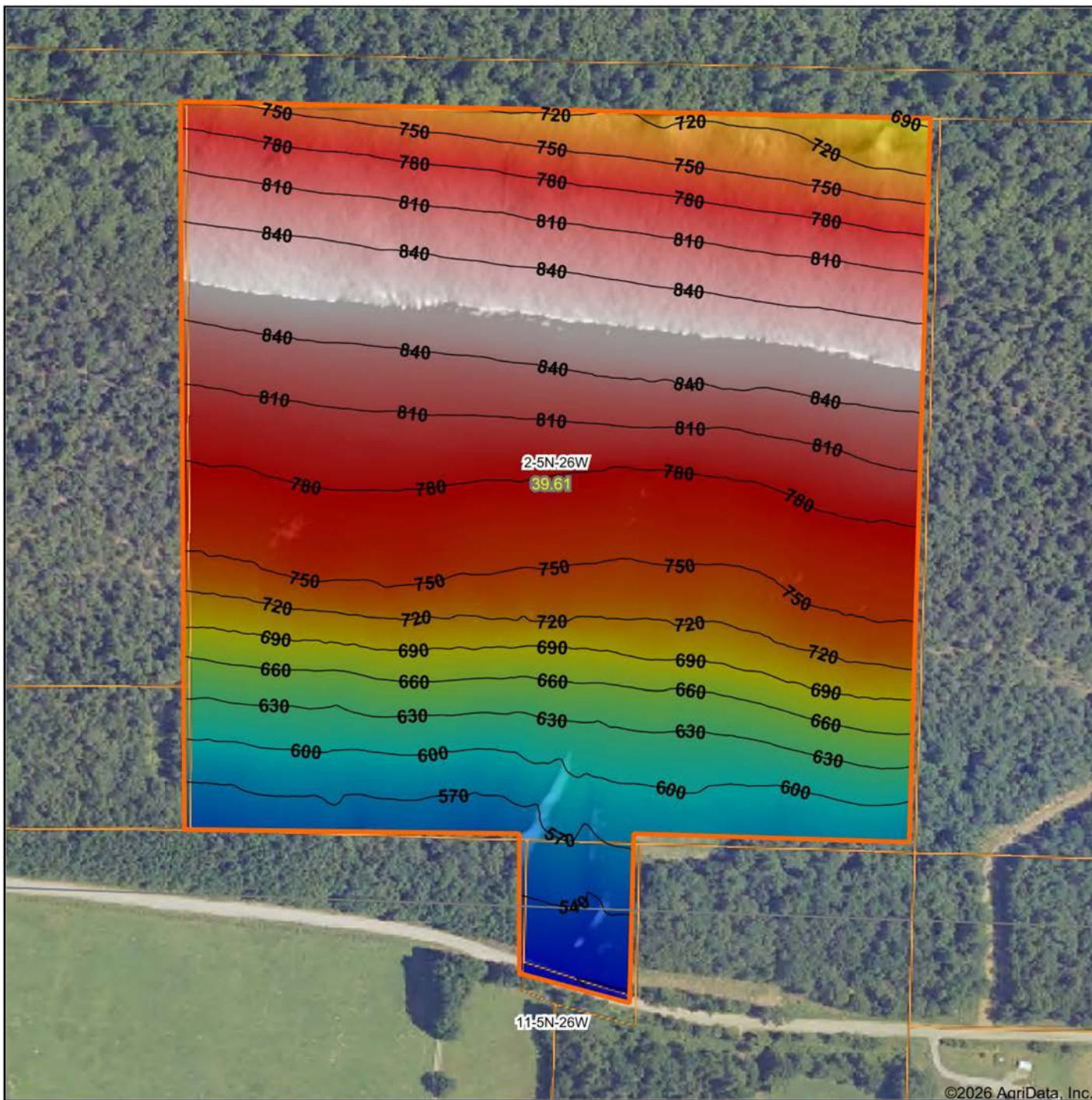


3/29/2026

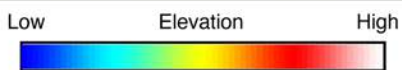
2-5N-26W
Logan County
Arkansas

Boundary Center: 35° 7' 17.06, -93° 43' 56.09

HILLSHADE MAP



©2026 AgriData, Inc.



Maps Provided By:



© AgriData, Inc. 2025

www.AgriDataInc.com

Source: USGS 1 meter dem
 Interval(ft): 30
 Min: 506.8
 Max: 867.1
 Range: 360.3
 Average: 741.1
 Standard Deviation: 91.44 ft

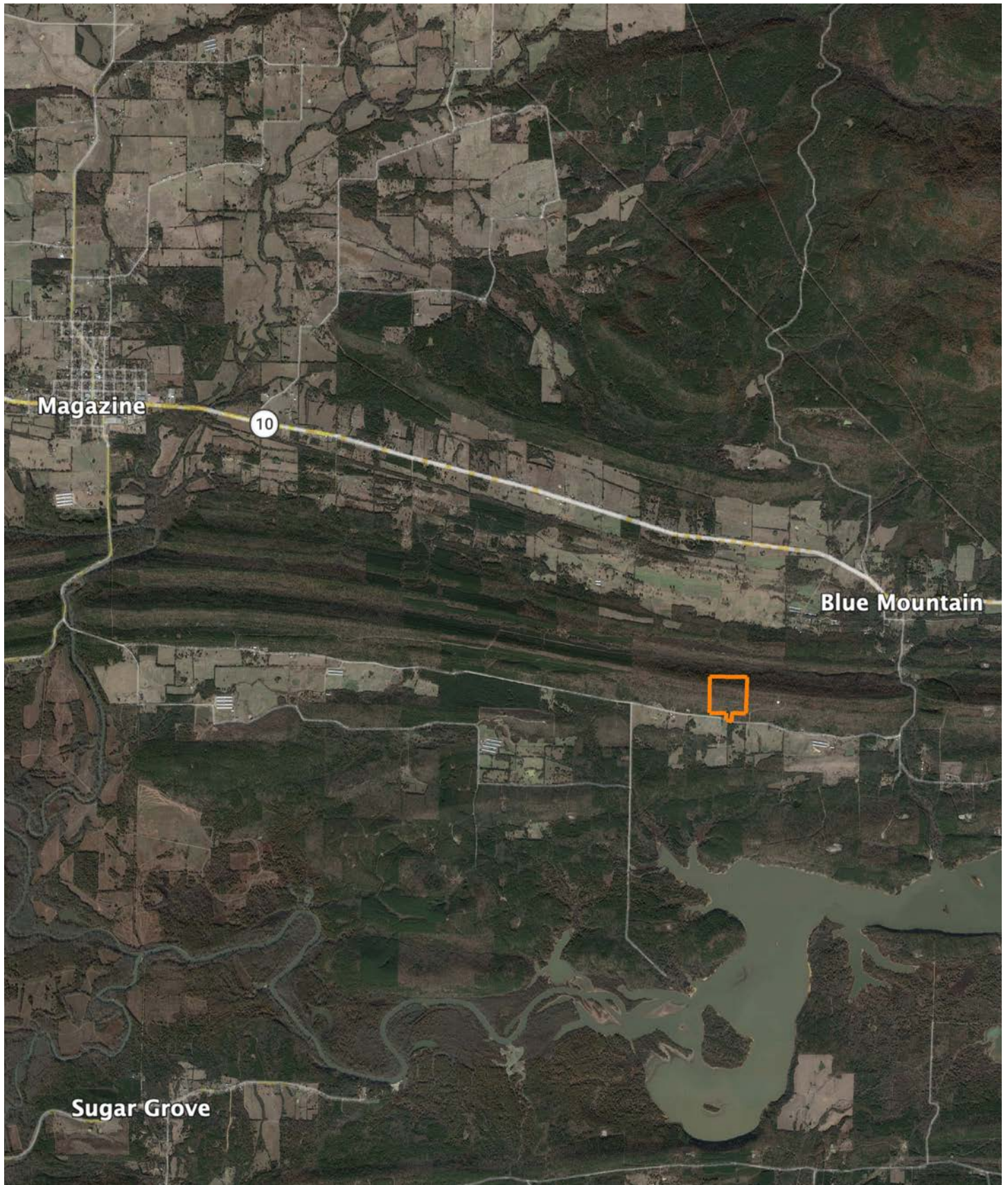


3/29/2026

2-5N-26W
Logan County
Arkansas

Boundary Center: 35° 7' 17.06, -93° 43' 56.09

OVERVIEW MAP



AGENT CONTACT

Born in Paris and raised in Scranton, Arkansas, Michael Joe Johnson has spent his entire life connected to the land, the people, and the rural way of life that defines West Central Arkansas. Growing up on a small farm and later discovering his passion for whitetail and turkey hunting in the early 2000s, Michael Joe developed an appreciation for land not only for its value, but for the memories, opportunities, and legacy it provides.

Michael Joe's journey into land sales began from the other side of the table - when he purchased his own farm through Midwest Land Group in 2020. The professionalism, communication, and continued follow-up he received made a lasting impression, inspiring him to help others experience that same level of service. As a former business owner who operated Johnson Industrial Coatings across five states for more than a decade, he understands client expectations, large-scale projects, and the importance of clear and dependable communication.

Whether advising on setting up bare farms for hunting or guiding first-time land buyers through a major investment, Michael Joe brings empathy and firsthand experience to every conversation. A former school board member for four years, a devout Christian, and member of American Legion Post 258, he is proud to serve the region he calls home with honesty, work ethic, and the ability to find common ground with just about anyone.

When you're ready to buy or sell rural property in West Central Arkansas, Michael Joe Johnson is ready to help every step of the way.



MICHAEL JOE JOHNSON, LAND AGENT

479.449.2227

MJohnson@MidwestLandGroup.com



MidwestLandGroup.com

This property is being offered by Midwest Land Group, LLC. 913.674.8010. All information provided by Midwest Land Group, LLC or their agents was acquired from sources deemed accurate and reliable, however we do not warrant its accuracy or completeness. Midwest Land Group, LLC assumes no liability for error, omission or investment results. Midwest Land Group, LLC. Licensed in Alabama, Arkansas, Illinois, Indiana, Iowa, Kansas, Kentucky, Louisiana, Minnesota, Mississippi, Missouri, Montana, Nebraska, Ohio, Oklahoma, South Dakota, Tennessee, Texas, Wisconsin, and Wyoming.