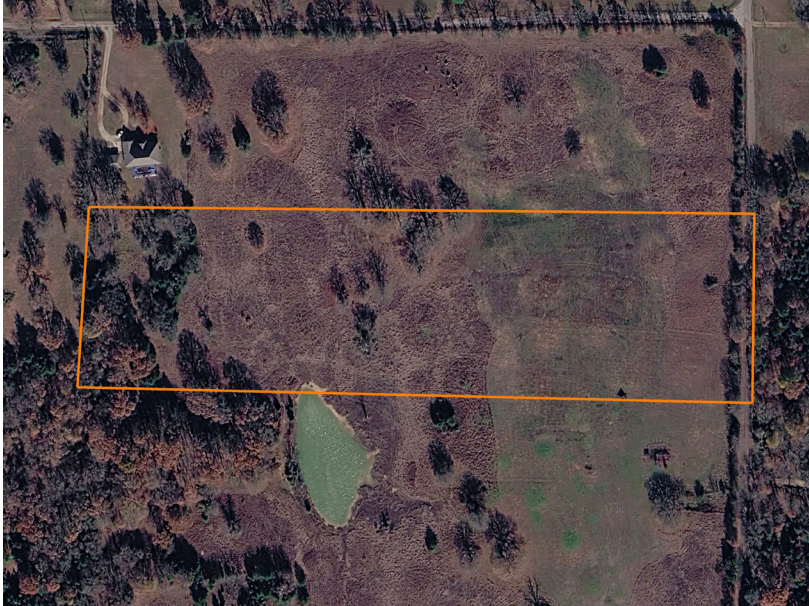


LAND FOR SALE

UNRESTRICTED 9 +/- ACRES IN NORTH LAMAR ISD NEAR PAT MAYSE LAKE

COUNTY: **LAMAR**
STATE: **TEXAS**
ACRES: **9**



PROPERTY FEATURES

- 9 surveyed acres north of Paris
- Located in North Lamar ISD
- No known restrictions
- Utilities available at the road
- Multiple build site options
- Trees at the back for added privacy
- Minutes from Pat Mayse Lake
- Secluded setting with convenient access to town
- Ideal for homesite, cabin, or investment
- Small acreage tracts in this area are in high demand



For more information, contact:

WES ARMSTRONG, Land Agent

903.243.9805 | WArmstrong@MidwestLandGroup.com

MidwestLandGroup.com

This property is being offered by Midwest Land Group, LLC, 7111 W. 151st Street, Ste. 27, Overland Park, KS 66223, 913.674.8010.
Licensed in AL, AR, IA, IL, IN, KS, KY, LA, MN, MO, MS, MT, NE, OH, OK, SD, TN, TX, WI, and WY.

