

LAND FOR SALE

DIVERSE 13 ACRES AND BUILD SITE



PROPERTY FEATURES

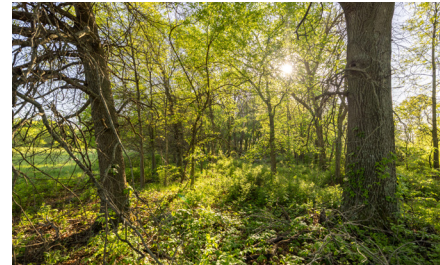
- Highway frontage
- Water at road
- Electric at road
- Fiber at road
- Beautiful build site
- Small pond
- High production pasture
- Good fences
- Borders Rock Island Trail
- Holden School District



COUNTY: **JOHNSON**

STATE: **MISSOURI**

ACRES: **25**



For more information, contact:

PAUL LOWRY, Land Agent

816.500.2513 | PLowry@MidwestLandGroup.com

MidwestLandGroup.com BUYERS, SELLERS, AND LAND – CONNECTED

This property is being offered by Midwest Land Group, LLC, 7111 W. 151st Street, Ste. 27, Overland Park, KS 66223, 913.674.8010. Licensed in AL, AR, IA, IL, IN, KS, KY, LA, MN, MO, MS, MT, NE, OH, OK, SD, TN, TX, WI, and WY.

