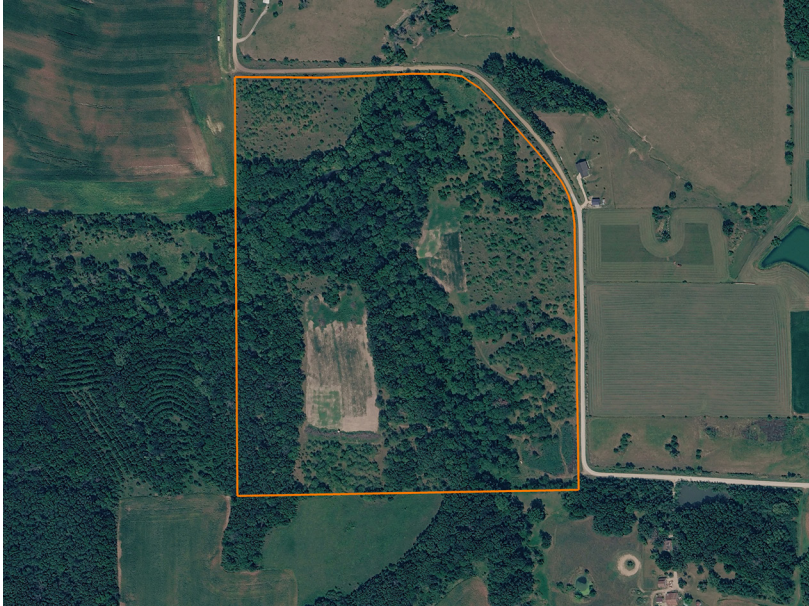


LAND FOR SALE

72 +/- ACRE HUNTING FARM IN JEFFERSON COUNTY, IOWA

COUNTY: **JEFFERSON**
STATE: **IOWA**
ACRES: **72**



PROPERTY FEATURES

- 72 +/- acres in Jefferson County
- Predominantly row crop neighborhood with limited recreational tracts
- Strong mix of thick bedding cover and open hardwood timber
- Mature white oaks and walnut throughout
- Approximately 6 acres of established food plot locations
- Rock Creek running through the property (year-round water source)
- Diverse terrain: ridges, ridge tops, and creek bottom
- Proven deer and turkey activity
- Trail camera history of quality whitetails



For more information, contact:

KOREY O'DAY, Land Broker

563.271.3495 | KODay@MidwestLandGroup.com

MidwestLandGroup.com



This property is being offered by Midwest Land Group, LLC, 7111 W. 151st Street, Ste. 27, Overland Park, KS 66223, 913.674.8010. Licensed in AL, AR, IA, IL, IN, KS, KY, LA, MN, MO, MS, MT, NE, OH, OK, SD, TN, TX, WI, and WY.