

MIDWEST LAND GROUP PRESENTS

13.77 ACRES

JACKSON COUNTY, MO

6701 RICKEY ROAD, KANSAS CITY, MISSOURI, 64133



MidwestLandGroup.com

MIDWEST LAND GROUP IS HONORED TO PRESENT

RARE COUNTRY HOMESTEAD IN KANSAS CITY

Live out your dreams on acreage super close to Kansas City with this gem! It's a must-see. You will fall in love with the location and fantastic 4 bedroom, 2.5 bathroom colonial style home. The house was built in 1969 and is approximately 3,340 square feet. The main level features a living room with a fireplace, a formal dining room, an eat-in kitchen, an additional sitting room, laundry, and the master suite. Upstairs includes 3 spacious bedrooms and 1 bathroom. The full basement offers plenty of storage space and a finished area that was used as an office. It gets even better with a swimming pool to enjoy during the hot summer days.

Beyond the house, you will discover the amazing land that offers a little bit of everything. It's literally an outdoor paradise! An incredible 100+ year old barn with horse stalls looks like something right out

of a magazine. The property has some cross-fencing and could be your equestrian dream setup. Another bonus is the large outbuilding that offers storage for equipment and a finished studio apartment. Perfect for hosting additional guests! The rest of the acreage is gently rolling with great pasture and wooded area loaded with deer sign. If hunting is up your alley, this would be a great spot right out the back door! Enjoy even more time in the outdoors at the beautiful half-acre pond. It's fully stocked and ready to fish.

Opportunities at homes on acreage like this in the Kansas City area hardly ever become available. Make this your very own country homestead and contact Skyler Wirsig at (816) 500-0168 for more information or to schedule a showing.



PROPERTY FEATURES

COUNTY: **JACKSON** | STATE: **MISSOURI** | ACRES: **13.77**

- 1969 colonial-style home
- 4 bed, 2.5 bath
- 3,340 +/- square feet
- Master suite
- Living room with fireplace
- Full basement
- Swimming pool
- Picturesque 100+ year old barn
- Cross-fencing
- Outbuilding with studio apartment
- Amazing fishing pond
- Rolling pasture and woods
- Great hunting opportunities
- 15 minutes to Lee's Summit
- 30 minutes to Overland Park
- 40 minutes to Kansas City airport



1969 COLONIAL-STYLE HOME

You will fall in love with the location and fantastic 4 bedroom, 2.5 bathroom colonial style home. The house was built in 1969 and is approximately 3,340 square feet.



CROSS-FENCING



PICTURESQUE 100+ YEAR OLD BARN

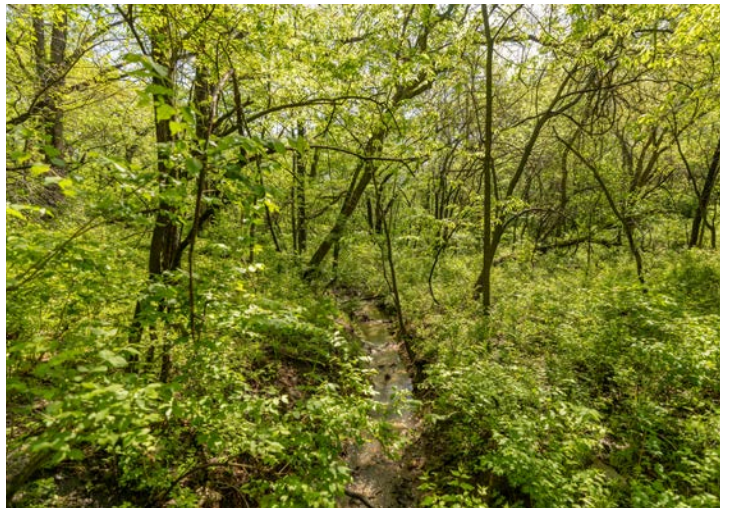
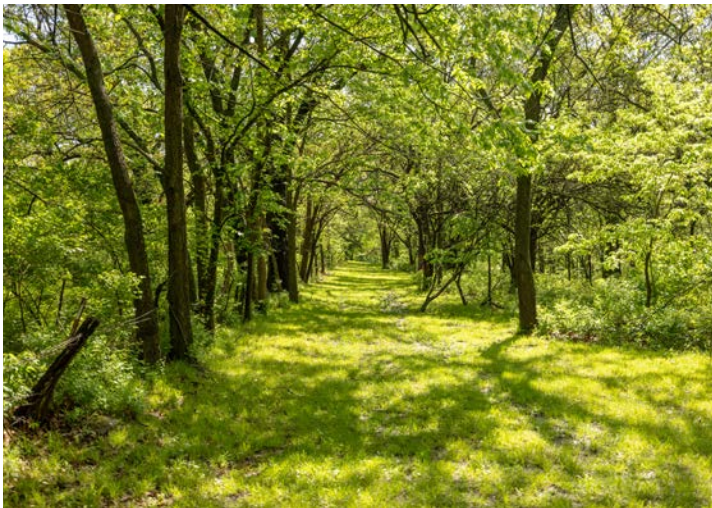


OUTBUILDING WITH STUDIO APARTMENT



POND, PASTURE, & WOODS

The rest of the acreage is gently rolling with great pasture and wooded area loaded with deer sign. If hunting is up your alley, this would be a great spot right out the back door! Enjoy even more time in the outdoors at the beautiful half-acre pond. It's fully stocked and ready to fish.



ADDITIONAL PHOTOS

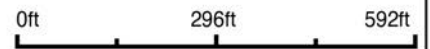


AERIAL MAP



©2026 AgriData, Inc.

Boundary Center: 38° 59' 56.41, -94° 26' 1.83



Maps Provided By:



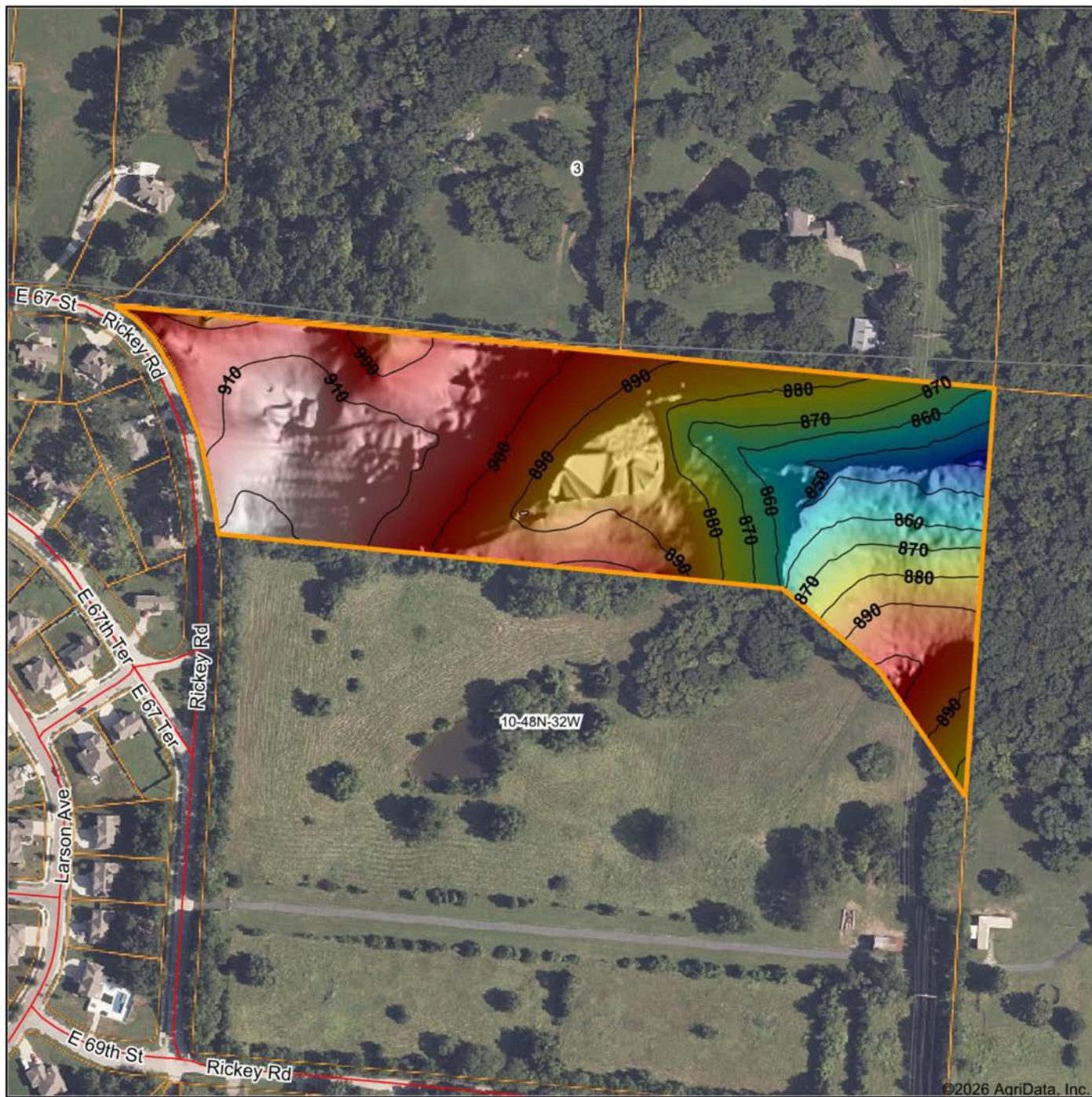
© AgriData, Inc. 2025 www.AgriDataInc.com

10-48N-32W
Jackson County
Missouri



1/22/2026

HILLSHADE MAP



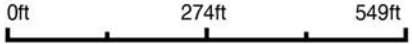
©2026 AgriData, Inc.

Low Elevation High



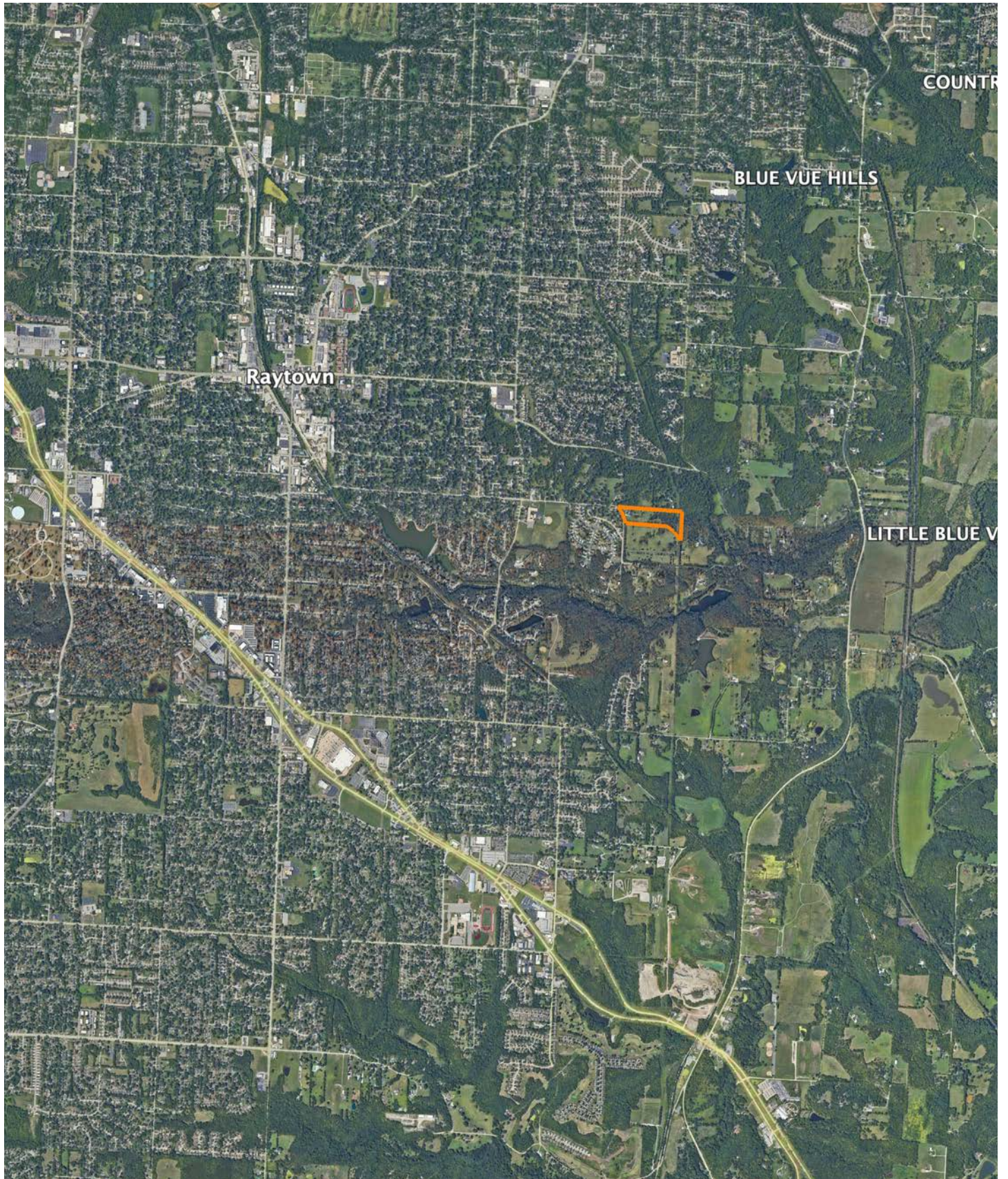
Maps Provided By:
surety
 CUSTOMIZED ONLINE MAPPING
 © AgriData, Inc. 2025 www.AgriDataInc.com

Source: USGS 1 meter dem
 Interval(ft): 10
 Min: 834.6
 Max: 922.6
 Range: 88.0
 Average: 888.6
 Standard Deviation: 20.21 ft



1/22/2026
10-48N-32W
Jackson County
Missouri
 Boundary Center: 38° 59' 56.41, -94° 26' 1.83

OVERVIEW MAP



AGENT CONTACT

Skyler Wirsig is a seasoned steward of the land with a firm focus on developing and managing agricultural properties. Over 15 years, he has gained invaluable experience filming and hunting for the Outdoor Channel's Heartland Bowhunter, which has earned several accolades under his watch.

Hailing from Kansas City, Missouri, Skyler graduated from William Jewell College with degrees in Business Administration and Critical Thought & Inquiry. His previous role as an operations manager, handling sales and customer relationships across 20 countries, enhances his effectiveness as a real estate agent.

A dedicated sportsman, Skyler proudly holds the Archery Missouri State Record for an 8-point whitetail. Despite his professional accomplishments, he remains approachable, enjoying fishing, sports, and travel with his family. Skyler also volunteers for the Wounded Warriors in Action Foundation. Residing on his farm in Grain Valley, Missouri, with his wife and sons, Skyler brings a wealth of expertise and a down-to-earth attitude to land sales in the Midwest.



SKYLER WIRSIG

LAND AGENT

816.500.0168

SWirsig@MidwestLandGroup.com



MidwestLandGroup.com

This property is being offered by Midwest Land Group, LLC. 913.674.8010. All information provided by Midwest Land Group, LLC or their agents was acquired from sources deemed accurate and reliable, however we do not warrant its accuracy or completeness. Midwest Land Group, LLC assumes no liability for error, omission or investment results. Midwest Land Group, LLC. Licensed in Alabama, Arkansas, Illinois, Indiana, Iowa, Kansas, Kentucky, Louisiana, Minnesota, Mississippi, Missouri, Montana, Nebraska, Ohio, Oklahoma, South Dakota, Tennessee, Texas, Wisconsin, and Wyoming.