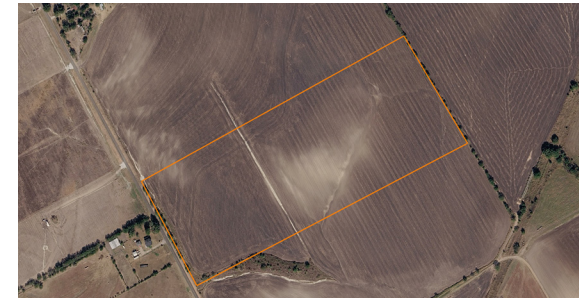


LAND FOR SALE

# 35 +/- TILLABLE ACRES WITH BEAUTIFUL VIEWS

COUNTY: **HILL**  
STATE: **TEXAS**  
ACRES: **35**



## PROPERTY FEATURES

- 35 +/- producing tillable acres
- Amazing sunrise & sunset views
- 795' of road frontage
- Great custom home site
- 2 miles to Hwy 35E
- 45 minutes to Dallas
- No restrictions
- Ag exemption
- Multiple uses
- In the heart of great dove hunting country



For more information, contact:

**DAN WELLS**, Land Agent

**817.666.3545** | [DWells@MidwestLandGroup.com](mailto:DWells@MidwestLandGroup.com)

**MidwestLandGroup.com**

This property is being offered by Midwest Land Group, LLC, 7111 W. 151st Street, Ste. 27, Overland Park, KS 66223, 913.674.8010.  
Licensed in AL, AR, IA, IL, IN, KS, KY, LA, MN, MO, MS, MT, NE, OH, OK, SD, TN, TX, WI, and WY.

