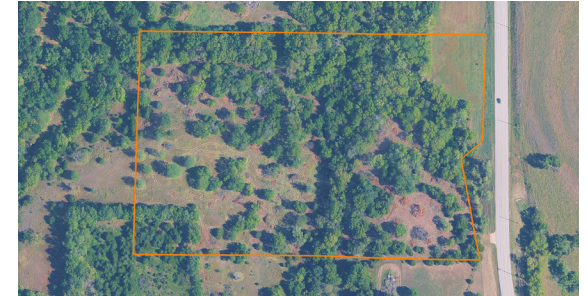


LAND FOR SALE

# 19 +/- ACRE RETREAT NEAR LAWRENCE WITH PRIME BUILD SITES & ABUNDANT WILDLIFE

COUNTY: **DOUGLAS**  
STATE: **KANSAS**  
ACRES: **19**



## PROPERTY FEATURES

- Easy access to Lawrence, Topeka, and Kansas City via I-70
- Heavily treed property offering natural beauty and seclusion
- Multiple build sites with some clearing already completed
- Wet-weather creek adds diversity and supports local wildlife
- Abundant whitetail deer and wildlife activity throughout
- Excellent opportunities for hunting or nature watching
- Minutes from Perry Lake, Clinton Lake, and the Kansas River
- Ideal for a homesite, recreational retreat, or investment property

For more information, contact:

**AARON BLOUNT**, Land Agent

**913.256.5905** | [ABlount@MidwestLandGroup.com](mailto:ABlount@MidwestLandGroup.com)

**MidwestLandGroup.com**

This property is being offered by Midwest Land Group, LLC, 7111 W. 151st Street, Ste. 27, Overland Park, KS 66223, 913.674.8010. Licensed in AL, AR, IA, IL, IN, KS, KY, LA, MN, MO, MS, MT, NE, OH, OK, SD, TN, TX, WI, and WY.

