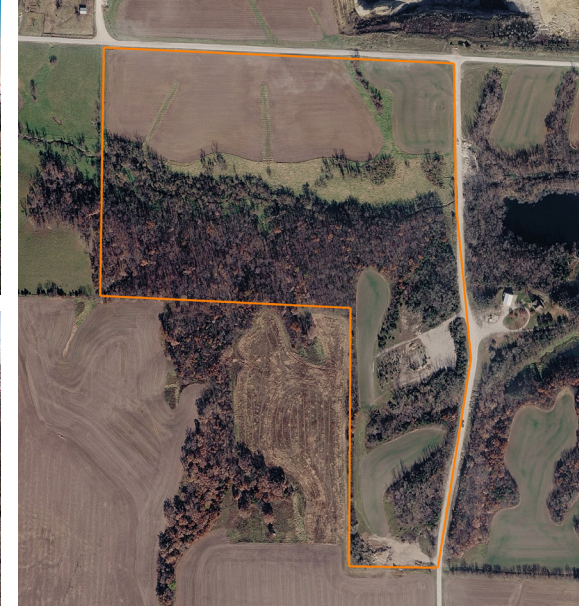


LAND FOR SALE

70 +/- ACRE MULTI-PURPOSE INVESTMENT PARCEL IN CLARK COUNTY

COUNTY: **CLARK**
STATE: **MISSOURI**
ACRES: **70**



PROPERTY FEATURES

- Versatile tract - perfect balance between a manageable hobby farm and a high-yield investment property
- High-quality ground currently in production (immediate annual cash rent)
- Thriving population of whitetail deer and wild turkey
- Dedicated timbered draws and edge habitat, develop custom food plots or sanctuary bedding areas
- Easy access for large farm equipment and personal vehicles year-round
- Enjoy the peace of the countryside
- Rock-solid "dirt" investment



For more information, contact:

GEORGE COLE, Land Agent

660.357.0907 | GCole@MidwestLandGroup.com

MidwestLandGroup.com



This property is being offered by Midwest Land Group, LLC, 7111 W. 151st Street, Ste. 27, Overland Park, KS 66223, 913.674.8010. Licensed in AL, AR, IA, IL, IN, KS, KY, LA, MN, MO, MS, MT, NE, OH, OK, SD, TN, TX, WI, and WY.