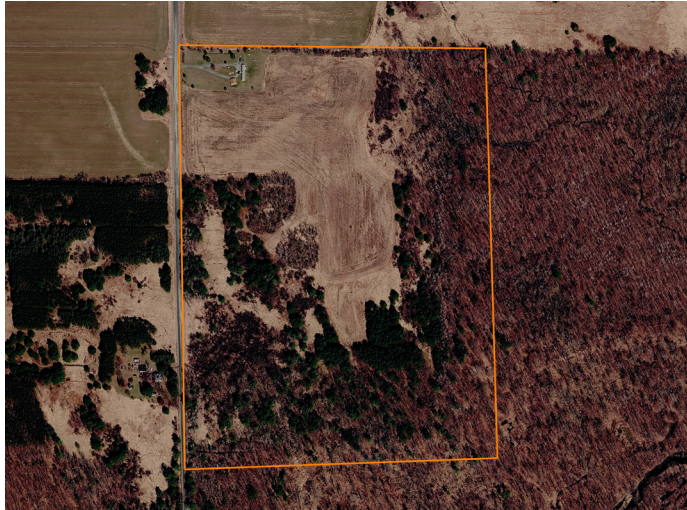


LAND FOR SALE

COUNTRY LIVING ON 61 +/- ACRES WITH HOME AND SHOP



PROPERTY FEATURES

- Many mature pines/oaks
- Excellent hunting
- Quiet private setting
- 20'x24' shop
- 2 bedroom, 2 bath mobile home
- Well-maintained acreage
- 2.40 miles off US Highway 10
- 6 miles to Neillsville
- 26 miles to Marshfield



COUNTY: **CLARK**

STATE: **WISCONSIN**

ACRES: **61**



For more information, contact:

DYLAN FLUEKIGER, Land Agent

715.690.3359 | DFluekiger@MidwestLandGroup.com

MidwestLandGroup.com BUYERS, SELLERS, AND LAND – CONNECTED

This property is being offered by Midwest Land Group, LLC, 7111 W. 151st Street, Ste. 27, Overland Park, KS 66223, 913.674.8010.
Licensed in AL, AR, IA, IL, IN, KS, KY, LA, MN, MO, MS, MT, NE, OH, OK, SD, TN, TX, WI, and WY.

