

MIDWEST LAND GROUP PRESENTS



10 ACRES
CASS COUNTY, MISSOURI

18200 East 191 Street, Pleasant Hill, MO, 64080



MIDWEST LAND GROUP IS HONORED TO PRESENT

AMAZING HOME AND SHOP ON 10 +/- ACRES IN CASS COUNTY

Here's your chance to live and roam on 10 +/- acres just across the Jackson County line in Cass County, Missouri. This amazing home on acreage is located just 20 minutes south of Lee's Summit along a blacktop road and only a half mile off Highway 291. Talk about a prime location! You will fall in love with the 300+ foot paved driveway access to the house that sits perfectly overlooking the property. Enjoy the sunrise and sunset views from the front porch or back deck. Most of the property consists of open pasture ground that offers a blank canvas with so many possibilities. The driveway is lined with mature oak trees and several nice shade trees, along with landscaping surrounding the house. Also, there is a gardening area complete with established fruit trees, grape vines, and a chicken coop.

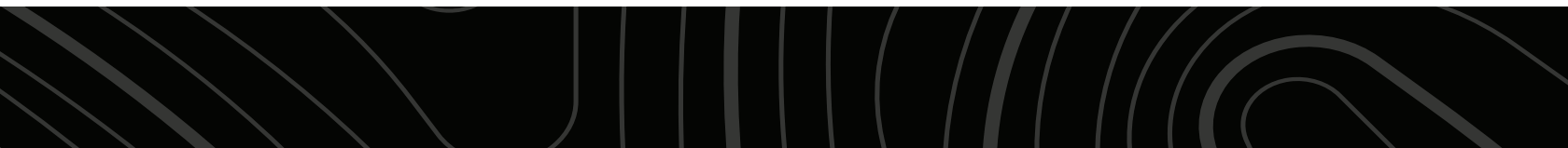
The 4 bedroom (plus 1 non-conforming), 4.5 bathroom house was built in 1999 and offers plenty of space for the family and entertainment. It's a must-see! The main level features a living room with a fireplace, vaulted ceilings, an oversized eat-in kitchen, an office, and a massive master suite. The upstairs includes 3 spacious bedrooms, 2 bathrooms, and a large play area. The finished walkout basement is complete with a full

kitchen, large living area, bathroom, non-conforming bedroom, safe room, washer/dryer hookups, and plenty of storage space. Don't forget about the incredible deck off the main level with amazing views and a covered patio underneath. It gets even better with the resort-style swimming pool with a slide and waterfall. This is the perfect setup to relax or entertain!

New house updates include exterior paint, carpet, refinished hardwood floors, fixtures, fans, and more. Also, the swimming pool was completely replaced 3 years ago. A professionally installed surveillance system with 20 cameras stays with the property.

Another bonus is the 5,000 square foot insulated outbuilding complete with concrete, electricity, and water. It offers so many possibilities and plenty of space for storing the boat, camper, equipment, etc. Perhaps even business use.

This property checks all the boxes! Make your dream of living in the country a reality and contact Skyler Wirsig at (816) 500-0168 for more information or to schedule a showing.



PROPERTY FEATURES

COUNTY: **CASS** | STATE: **MISSOURI** | ACRES: **10**

- 10 +/- acres
- 1.5 story home built in 1999
- 4 bed, 4.5 bath
- 1 non-conforming bedroom
- Huge master suite
- Spacious eat-in kitchen
- Open with vaulted ceilings
- Family room with fireplace
- Finished walkout basement with full kitchen
- Huge deck and covered patio with amazing views
- Resort-style swimming pool
- Beautiful trees and gardening area
- Camera surveillance system
- 5,000 sq. ft. outbuilding with concrete, electric, and water
- 20 minutes to Lee's Summit
- 40 minutes to Overland Park/Kansas City
- 1 hour to Kansas City Airport



1.5 STORY HOME BUILT IN 1999

The 4 bedroom (plus 1 non-conforming), 4.5 bathroom house was built in 1999 and offers plenty of space for the family and entertainment. It's a must-see!



4 BED, 4.5 BATH



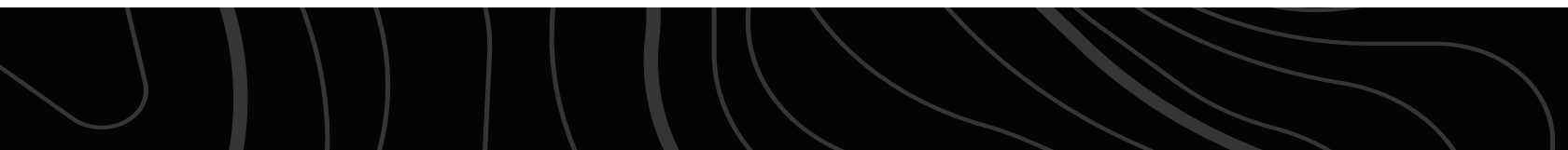
HUGE MASTER SUITE



FINISHED WALKOUT BASEMENT



RESORT-STYLE SWIMMING POOL



5,000 SQ. FT. OUTBUILDING

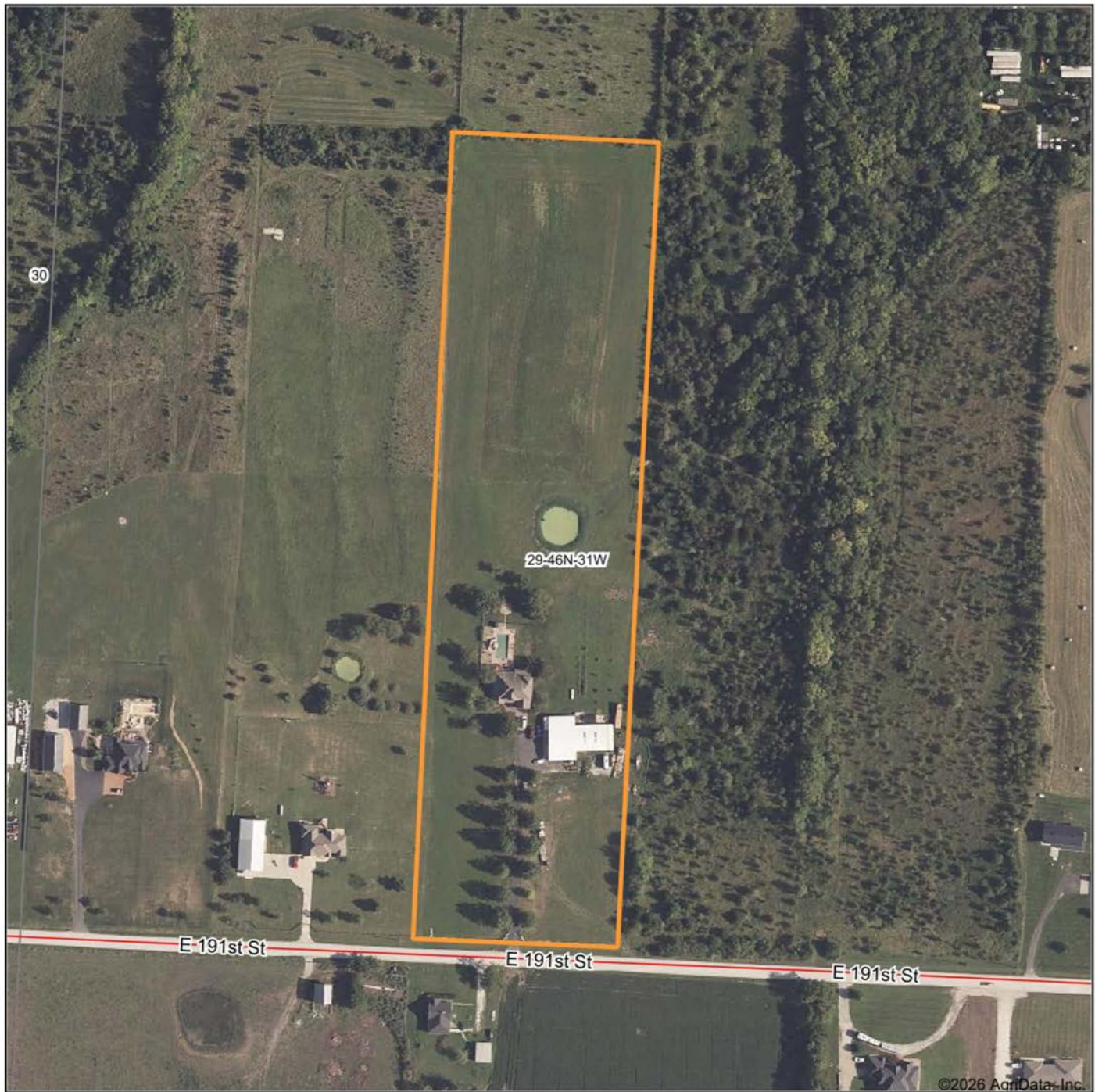
Another bonus is the 5,000 square foot insulated outbuilding complete with concrete, electricity, and water. It offers so many possibilities and plenty of space for storing the boat, camper, equipment, etc. Perhaps even business use.



ADDITIONAL PHOTOS



AERIAL MAP



©2026 AgriData, Inc.

Boundary Center: $38^{\circ} 46' 29.4$, $-94^{\circ} 22' 53.24$

0ft 250ft 501ft



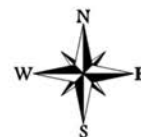
Maps Provided By:



© AgriData, Inc. 2025

www.AgriDataInc.com

29-46N-31W
Cass County
Missouri



3/2/2026

OVERVIEW MAP



AGENT CONTACT

Skyler Wirsig is a seasoned steward of the land with a firm focus on developing and managing agricultural properties. Over 15 years, he has gained invaluable experience filming and hunting for the Outdoor Channel's Heartland Bowhunter, which has earned several accolades under his watch.

Hailing from Kansas City, Missouri, Skyler graduated from William Jewell College with degrees in Business Administration and Critical Thought & Inquiry. His previous role as an operations manager, handling sales and customer relationships across 20 countries, enhances his effectiveness as a real estate agent.

A dedicated sportsman, Skyler proudly holds the Archery Missouri State Record for an 8-point whitetail. Despite his professional accomplishments, he remains approachable, enjoying fishing, sports, and travel with his family. Skyler also volunteers for the Wounded Warriors in Action Foundation. Residing on his farm in Grain Valley, Missouri, with his wife and sons, Skyler brings a wealth of expertise and a down-to-earth attitude to land sales in the Midwest.



SKYLER WIRSIG

LAND AGENT

816.500.0168

SWirsig@MidwestLandGroup.com



MidwestLandGroup.com

This property is being offered by Midwest Land Group, LLC. 913.674.8010. All information provided by Midwest Land Group, LLC or their agents was acquired from sources deemed accurate and reliable, however we do not warrant its accuracy or completeness. Midwest Land Group, LLC assumes no liability for error, omission or investment results. Midwest Land Group, LLC. Licensed in Alabama, Arkansas, Illinois, Indiana, Iowa, Kansas, Kentucky, Louisiana, Minnesota, Mississippi, Missouri, Montana, Nebraska, Ohio, Oklahoma, South Dakota, Tennessee, Texas, Wisconsin, and Wyoming.