

MIDWEST LAND GROUP PRESENTS

5.2 ACRES IN

CARTER COUNTY TENNESSEE



MidwestLandGroup.com

MIDWEST LAND GROUP IS HONORED TO PRESENT

PERFECT MOUNTAIN LIVING

Tucked just outside the city limits of Elizabethton in beautiful Carter County, this 5.2 +/- acre tract offers the perfect balance of privacy, convenience, and East Tennessee mountain charm. If you've been searching for a manageable piece of land with scenic views and a peaceful setting, this property delivers. Surrounded by natural beauty and located in a quiet neighborhood, it provides an ideal escape while still being close to town.

The property features gently rolling mountain terrain with elevated areas that offer attractive views—perfect for building your dream home, cabin, or weekend retreat. Also, a cleared road meanders throughout the property. With electricity available, you're already one step closer to bringing your vision to life. Whether you're looking to build now or invest for the future, this tract offers flexibility and long-term potential.

Outdoor enthusiasts will appreciate the abundant wildlife that calls this land home. Whitetail deer and turkey are frequent visitors, making this a great option for those who enjoy hunting or simply want to experience nature right outside their door. The size of the tract makes it easy to maintain while still offering plenty of room to explore, relax, and enjoy the outdoors.

Convenience is key with this location—just 2.8 miles from downtown Elizabethton for local dining, shopping, and community events, and only 11.3 miles from Johnson City for expanded amenities including major retailers, restaurants, and medical facilities. Plus, you're just over an hour from Asheville, giving you quick access to world-class dining, arts, and mountain adventures. This is your opportunity to own a slice of East Tennessee mountain living with convenience close at hand.

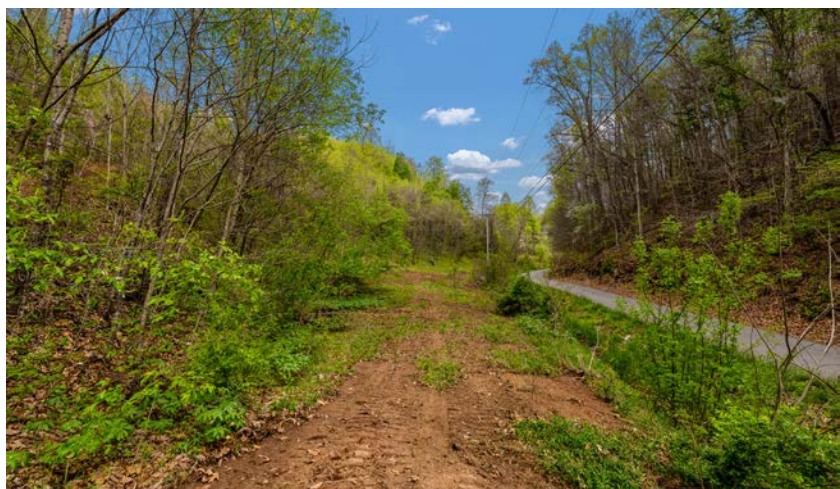
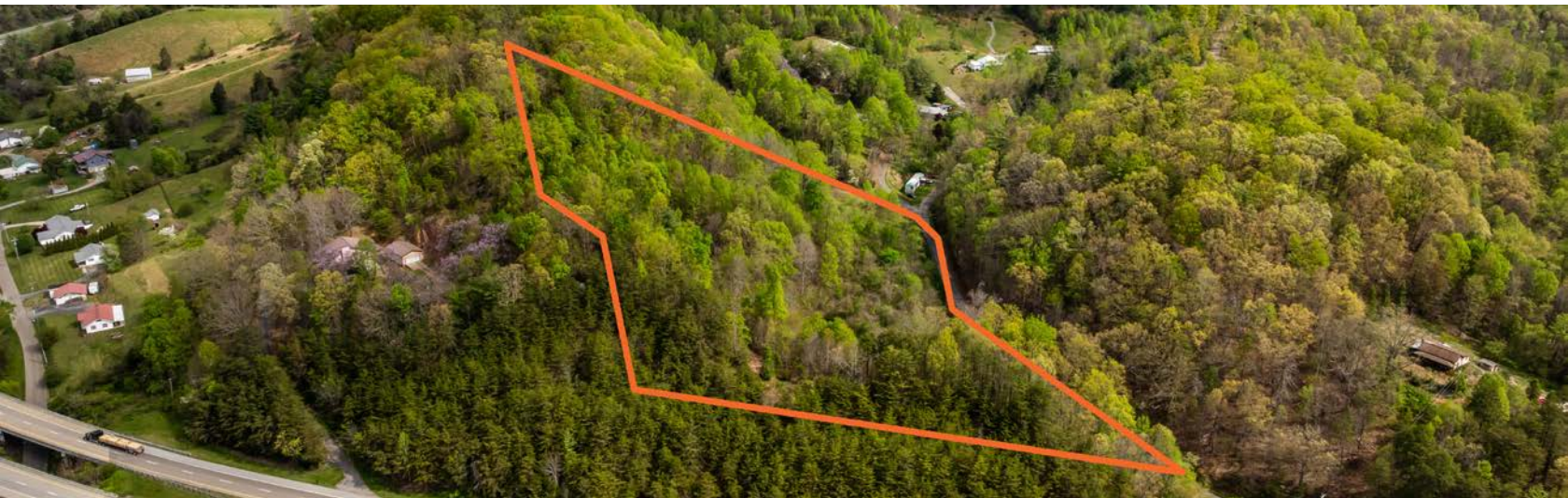
PROPERTY FEATURES

COUNTY: **CARTER** | STATE: **TENNESSEE** | ACRES: **5.2**

- 5.2 +/- acre tract of raw land
- Located just outside Elizabethton in Carter County
- Manageable acreage – ideal for building, recreation, or investment
- Mountain property with scenic views
- Electricity available
- Quiet, peaceful neighborhood setting
- Abundant wildlife – whitetail deer & turkey
- Multiple potential build sites
- Perfect for a cabin, primary residence, or weekend retreat
- Only 2.8 miles to downtown Elizabethton
- Just 11.3 miles to Johnson City (shopping, dining, medical)
- Just over an hour to Asheville (mountains, culture, outdoor recreation)

MULTIPLE POTENTIAL BUILD SITES

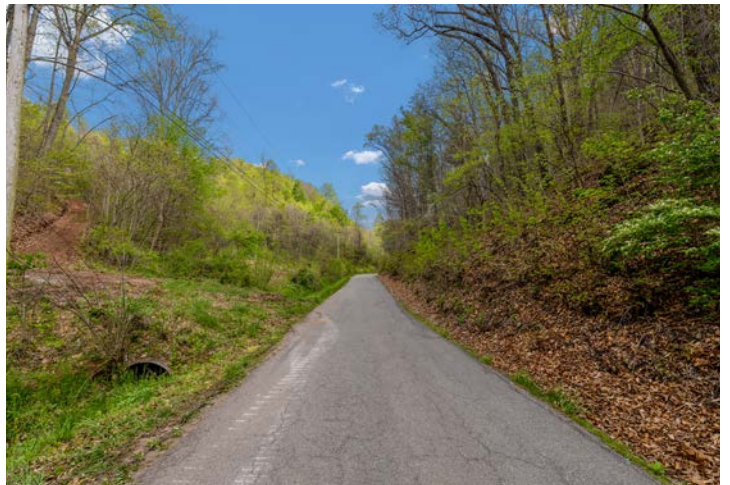
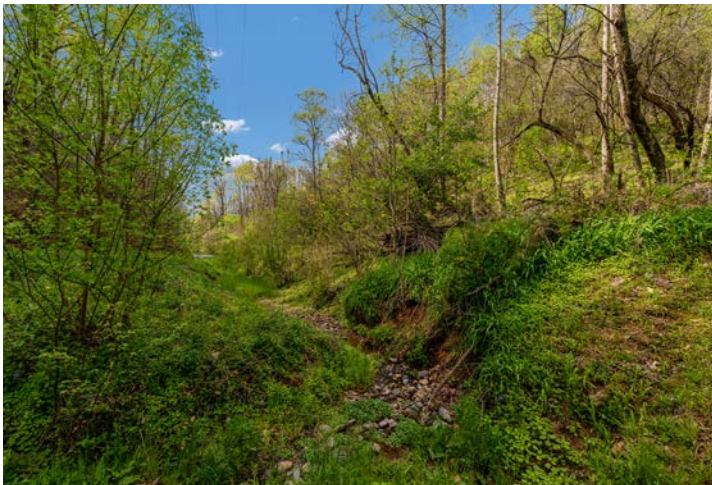
If you've been searching for a manageable piece of land with scenic views and a peaceful setting, this property delivers. Surrounded by natural beauty and located in a quiet neighborhood, it provides an ideal escape while still being close to town.



RAW LAND



ADDITIONAL PHOTOS



TOPOGRAPHY MAP



©2026 AgriData, Inc.



Maps Provided By:
surety
CUSTOMIZED ONLINE MAPPING
© AgriData, Inc. 2025 www.AgriDataInc.com

Source: USGS 1 meter dem
Interval(ft): 10.0
Min: 1,671.4
Max: 1,881.0
Range: 209.6
Average: 1,740.8
Standard Deviation: 46.69 ft

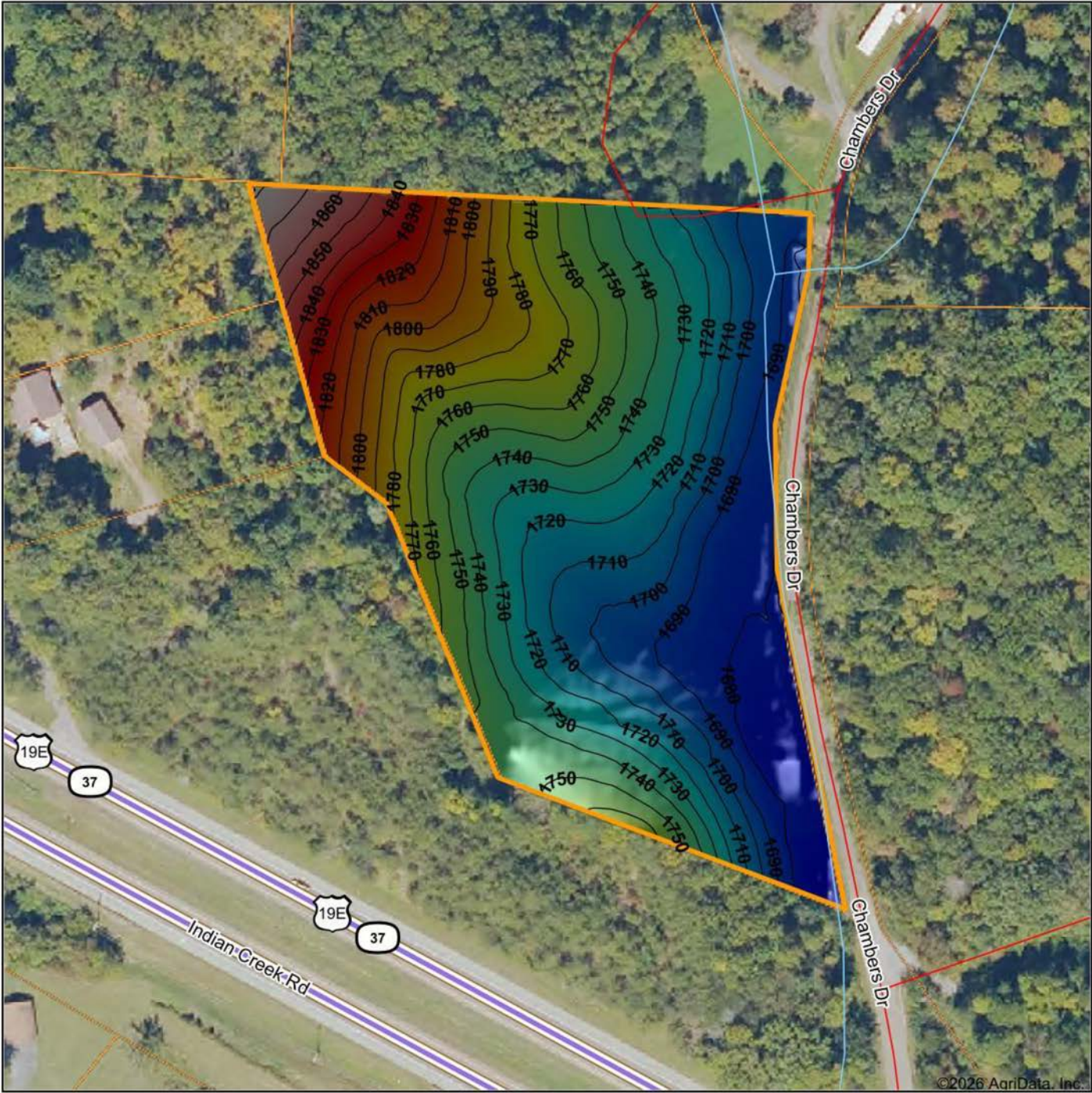


4/2/2026

**Carter County
Tennessee**

Boundary Center: 36° 22' 54.97, -82° 13' 19.18

HILLSHADE MAP



Low Elevation High



Maps Provided By:



© AgriData, Inc. 2025 www.AgriDataInc.com

Source: USGS 1 meter dem
 Interval(ft): 10
 Min: 1,671.4
 Max: 1,881.0
 Range: 209.6
 Average: 1,740.8
 Standard Deviation: 46.69 ft

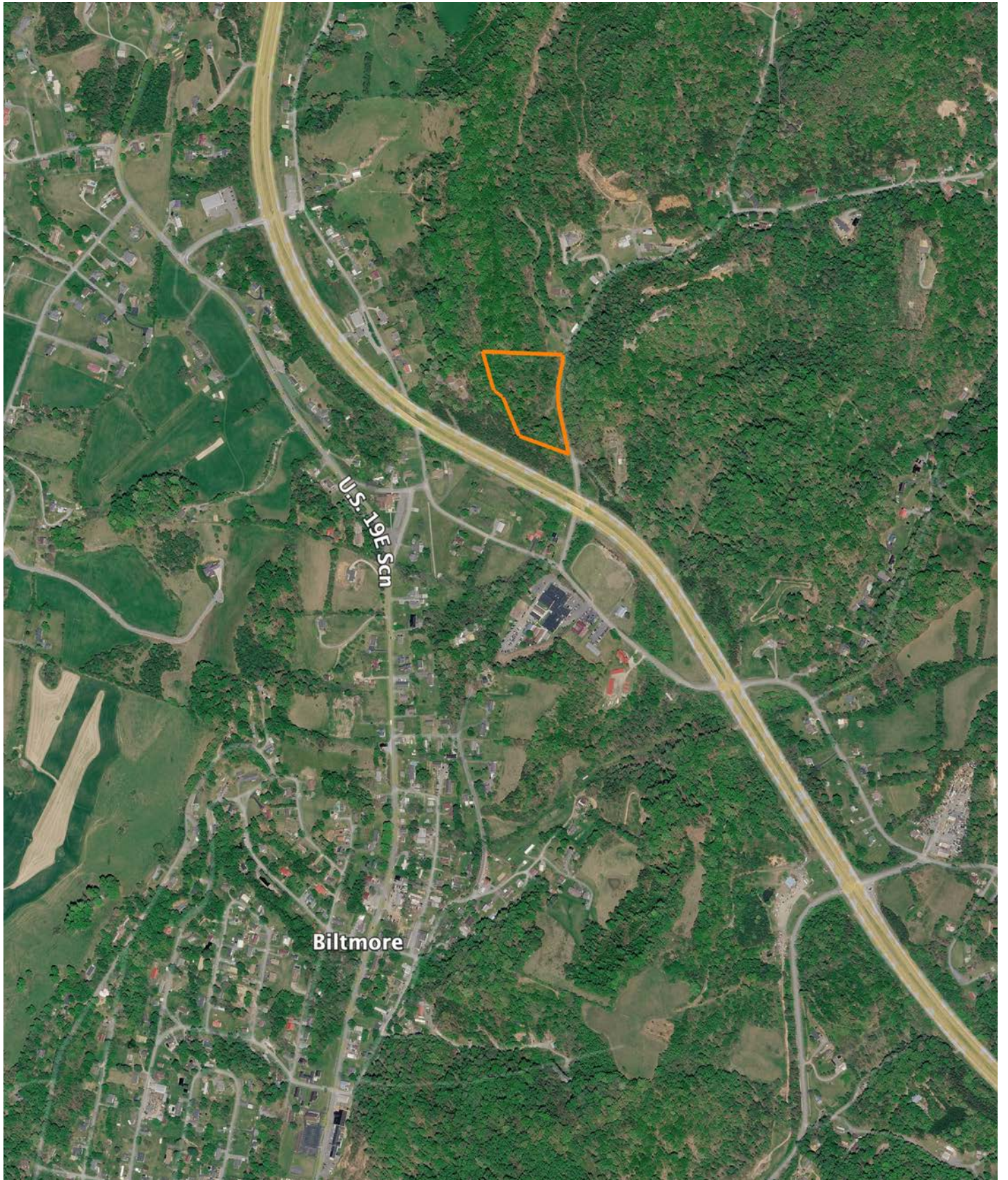


4/2/2026

**Carter County
 Tennessee**

Boundary Center: 36° 22' 54.97, -82° 13' 19.18

OVERVIEW MAP



AGENT CONTACT

Buying or selling land is a deeply personal experience, and Jason Mitchem understands this better than most. With a diverse background in farming, ministry, and real estate, he combines a steady hand with a servant's heart to guide clients through decisions that are as emotionally significant as they are financially impactful.

Raised on a working farm in Fort Valley, Georgia, Jason's upbringing involved hands-on work such as baling hay, tending livestock, and repairing farm equipment — all before most children learn to drive. Additionally, his family operated a wholesale farm equipment distributorship, providing him with early exposure to the complexities of both business and labor of rural life. Whether managing land for wildlife or farming for profit, Jason's lifelong experience has afforded him a unique understanding of the land and lifestyle many clients are chasing.

Though he later founded and led a church in Augusta, Georgia, and supported his wife's successful real estate career, Jason maintained a strong connection to the land. After the passing of his wife in early 2023, he felt a renewed sense of purpose to return to real estate, offering his services with a focus on serving others in a new way.

Jason now resides in Johnson City, Tennessee, with his wife Kristina and stepchildren, John and Ari. His son, Devin, has taken on the role of lead pastor at the church, while his daughter, Jaysa, has launched her own thriving real estate career in Georgia. A licensed pilot, avid outdoorsman, grandfather and man of deep conviction, Jason leads with integrity and treats every transaction as if it were his own land at stake.



JASON MITCHEM

LAND AGENT

423.525.8275

JMitchem@MidwestLandGroup.com



MidwestLandGroup.com

This property is being offered by Midwest Land Group, LLC. 913.674.8010. All information provided by Midwest Land Group, LLC or their agents was acquired from sources deemed accurate and reliable, however we do not warrant its accuracy or completeness. Midwest Land Group, LLC assumes no liability for error, omission or investment results. Midwest Land Group, LLC. Licensed in Alabama, Arkansas, Illinois, Indiana, Iowa, Kansas, Kentucky, Louisiana, Minnesota, Mississippi, Missouri, Montana, Nebraska, Ohio, Oklahoma, South Dakota, Tennessee, Texas, Wisconsin, and Wyoming.