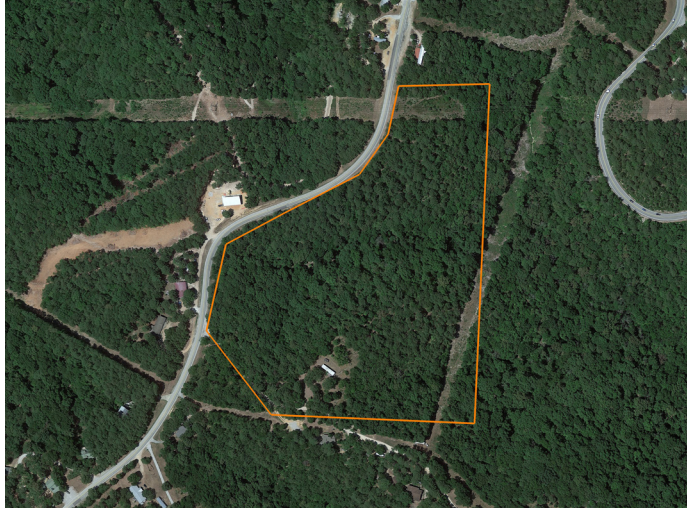


# LAND FOR SALE

## 24 +/- UNRESTRICTED ACRES WITH PAVED ROAD FRONTAGE NEAR BEAVER LAKE



### PROPERTY FEATURES

- 24 +/- surveyed acres
- Unrestricted land
- Paved road frontage
- Existing level build site
- Well on-site
- Electric on-site
- 9 +/- minutes to Beaver Lake Dam
- 9 +/- minutes to White River access
- Billboard rental potential
- 10 +/- minutes to Downtown Eureka Springs



COUNTY: **CARROLL**

STATE: **ARKANSAS**

ACRES: **24**



For more information, contact:

**JON MASSIE**, Land Agent

785.313.0981 | [JMassie@MidwestLandGroup.com](mailto:JMassie@MidwestLandGroup.com)

**MidwestLandGroup.com** BUYERS, SELLERS, AND LAND – CONNECTED

This property is being offered by Midwest Land Group, LLC, 7111 W. 151st Street, Ste. 27, Overland Park, KS 66223, 913.674.8010. Licensed in AL, AR, IA, IL, IN, KS, KY, LA, MN, MO, MS, MT, NE, OH, OK, SD, TN, TX, WI, and WY.