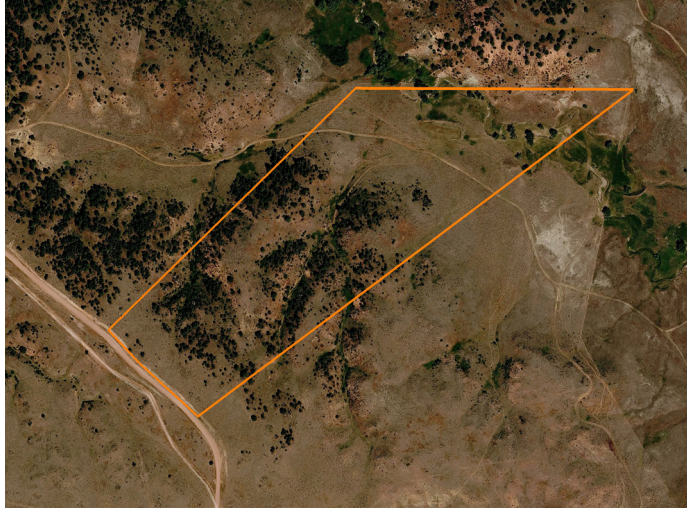


LAND FOR SALE

45 +/- ACRES - SPRING HOLLOW GRASS & TIMBER



PROPERTY FEATURES

- Spring
- Pine trees
- Grassland
- 12 miles north of Gillette, WY
- Accessible
- Private/secluded
- Wildlife amok
- Rock outcroppings
- Varying terrain
- 7 miles from NE WY Regional Airport



COUNTY: **CAMPBELL**

STATE: **WYOMING**

ACRES: **45**



For more information, contact:

RIDGE BRIGGS, Land Agent

307.851.6937 | RBriggs@MidwestLandGroup.com

MidwestLandGroup.com BUYERS, SELLERS, AND LAND – CONNECTED

This property is being offered by Midwest Land Group, LLC, 7111 W. 151st Street, Ste. 27, Overland Park, KS 66223, 913.674.8010.
Licensed in AL, AR, IA, IL, IN, KS, KY, LA, MN, MO, MS, MT, NE, OH, OK, SD, TN, TX, WI, and WY.