

LAND FOR SALE

# 37 +/- ACRE PRAIRIE AND PINE DRAW

COUNTY: **CAMPBELL**  
STATE: **WYOMING**  
ACRES: **37**



## PROPERTY FEATURES

- Grassland
- 12 miles N of Gillette, WY
- 7 miles from NE WY Regional Airport
- Bighorn Mountain views
- Deer/turkey
- Mature pine trees
- Multiple build-sites
- 18,000 acres of BLM close by
- Accessible
- Horse pasture



For more information, contact:

**RIDGE BRIGGS**, Land Agent

**307.851.6937** | [RBriggs@MidwestLandGroup.com](mailto:RBriggs@MidwestLandGroup.com)

**MidwestLandGroup.com**



This property is being offered by Midwest Land Group, LLC, 7111 W. 151st Street, Ste. 27, Overland Park, KS 66223, 913.674.8010. Licensed in AL, AR, IA, IL, IN, KS, KY, LA, MN, MO, MS, MT, NE, OH, OK, SD, TN, TX, WI, and WY.

LAND FOR SALE

# GORGEOUS 80 ACRE FARM WITH GREAT DEER HUNTING IN BUCHANAN COUNTY

COUNTY: **BUCHANAN**  
STATE: **MISSOURI**  
ACRES: **80**



## PROPERTY FEATURES

- Prime property to build a home or cabin
- Gorgeous views
- Secluded southern exposure build site
- 25 minutes from I-29 and highway 152
- Well-maintained road only 1/4 mile to asphalt
- Great mix of open pasture and timber
- Beautiful 5 acre lake
- Great hunting
- Strong deer and turkey population
- Fertile soils for hay or row crop production



For more information, contact:

**RIDGE BRIGGS**, Land Agent

**307.851.6937** | [RBriggs@MidwestLandGroup.com](mailto:RBriggs@MidwestLandGroup.com)

**MidwestLandGroup.com**

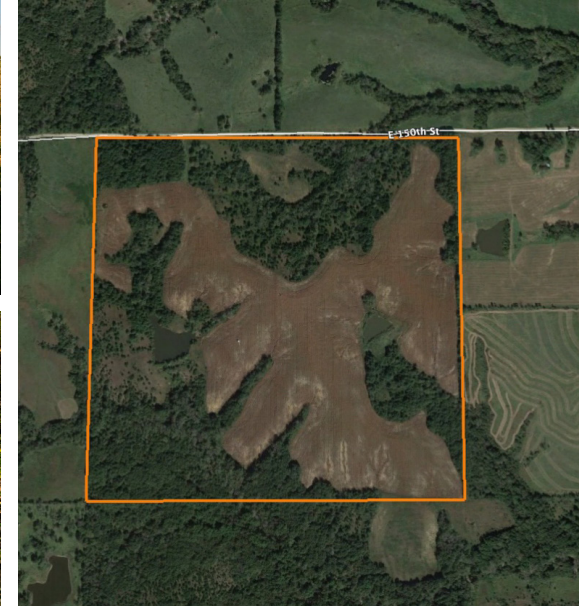


This property is being offered by Midwest Land Group, LLC, 7111 W. 151st Street, Ste. 27, Overland Park, KS 66223, 913.674.8010. Licensed in AL, AR, IA, IL, IN, KS, KY, LA, MN, MO, MS, MT, NE, OH, OK, SD, TN, TX, WI, and WY.

LAND FOR SALE

# GORGEOUS 80 ACRE FARM WITH GREAT DEER HUNTING IN BUCHANAN COUNTY

COUNTY: **BUCHANAN**  
STATE: **MISSOURI**  
ACRES: **80**



## PROPERTY FEATURES

- Prime property to build a home or cabin
- Gorgeous views
- Secluded southern exposure build site
- 25 minutes from I-29 and highway 152
- Well-maintained road only 1/4 mile to asphalt
- Great mix of open pasture and timber
- Beautiful 5 acre lake
- Great hunting
- Strong deer and turkey population
- Fertile soils for hay or row crop production



For more information, contact:

**RIDGE BRIGGS**, Land Agent

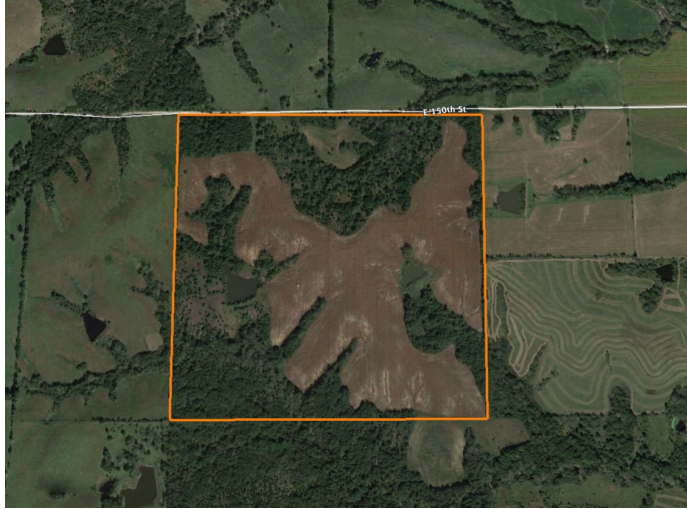
**307.851.6937** | [RBriggs@MidwestLandGroup.com](mailto:RBriggs@MidwestLandGroup.com)

**MidwestLandGroup.com**



# LAND FOR SALE

## GORGEOUS 80 ACRE FARM WITH GREAT HUNTING IN BUCHANAN COUNTY



### PROPERTY FEATURES

- Prime property to build a home or cabin
- Gorgeous views
- Secluded southern exposure build site
- 25 minutes from I-29 and highway 152
- Well-maintained road only 1/4 mile to asphalt
- Great mix of open pasture and timber
- Beautiful 5 acre lake
- Great hunting
- Strong deer and turkey population
- Fertile soils for hay or row crop production



COUNTY: **BUCHANAN**

STATE: **MISSOURI**

ACRES: **80**



For more information, contact:

**RIDGE BRIGGS**, Land Agent

307.851.6937 | RBriggs@MidwestLandGroup.com

**MidwestLandGroup.com** BUYERS, SELLERS, AND LAND – CONNECTED

This property is being offered by Midwest Land Group, LLC, 7111 W. 151st Street, Ste. 27, Overland Park, KS 66223, 913.674.8010. Licensed in AL, AR, IA, IL, IN, KS, KY, LA, MN, MO, MS, MT, NE, OH, OK, SD, TN, TX, WI, and WY.