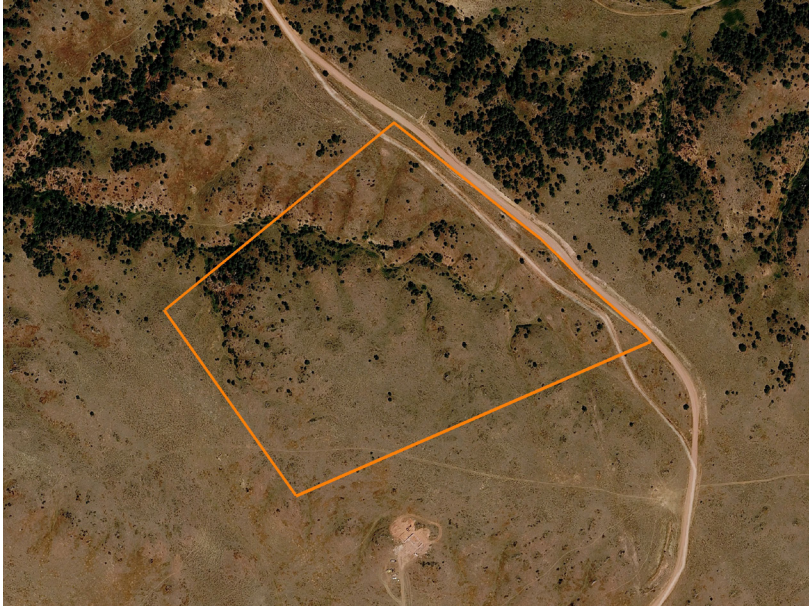


LAND FOR SALE

# 35 +/- ACRES OF WYOMING ROLLING HILLS & TIMBER

COUNTY: **CAMPBELL**  
STATE: **WYOMING**  
ACRES: **35**



## PROPERTY FEATURES

- Multiple build sites
- 7 miles from NE WY Regional Airport
- Rolling hills
- Grassy bottoms
- Timber
- Accessible
- 900 yds maintained dirt road frontage
- Deer/turkey
- Bighorn Mountain Range views
- 18,000 acres BLM close by



For more information, contact:

**RIDGE BRIGGS**, Land Agent

**307.851.6937** | [RBriggs@MidwestLandGroup.com](mailto:RBriggs@MidwestLandGroup.com)

**MidwestLandGroup.com**



This property is being offered by Midwest Land Group, LLC, 7111 W. 151st Street, Ste. 27, Overland Park, KS 66223, 913.674.8010.  
Licensed in AL, AR, IA, IL, IN, KS, KY, LA, MN, MO, MS, MT, NE, OH, OK, SD, TN, TX, WI, and WY.