

MIDWEST LAND GROUP PRESENTS

170 ACRES IN

BAXTER COUNTY ARKANSAS



MidwestLandGroup.com

MIDWEST LAND GROUP IS HONORED TO PRESENT

PREMIER 170 +/- ACRE LAKEFRONT HAVEN WITH RARE ACCESS, STUNNING VIEWS, & ENDLESS POTENTIAL

Extremely rare opportunity to own a large acreage tract overlooking the lake! This 170 +/- acre tract on Lake Norfolk features an extraordinary 8,500 feet of Corps of Engineers frontage, offering a rare combination of privacy, scale, and direct connection to the water. Properties with this kind of lake frontage are exceptionally difficult to find, making this a truly standout offering in North Central Arkansas.

The property is thoughtfully positioned to take full advantage of its setting, with multiple elevated build sites showcasing breathtaking panoramic views of the lake. Whether you're planning a private estate, luxury retreat, or family getaway, these homesites provide unmatched scenery and a one-of-a-kind backdrop. Adding to its uniqueness, the tract includes rare, usable lake access in the southwest corner, allowing you to enjoy the water in a way most Corps frontage properties simply cannot offer.

The land itself is a beautiful mix of approximately 60 acres of open pasture and the remainder in timber, providing both functionality and natural appeal. The fenced perimeter and cleared boundary lines make the property easily accessible and ready for immediate use, whether for recreation, grazing, or future development.

Located just 2 miles north of Henderson with paved access via County Road 47 and only 15 minutes from Mountain Home, this property also offers unmatched recreational value. With direct walk-in access to over 300 acres of public hunting ground and abundant deer and turkey throughout, it's an ideal destination for both outdoor enthusiasts and those seeking a rare combination of lakefront beauty, build potential, and long-term investment value.



PROPERTY FEATURES

COUNTY: **BAXTER** | STATE: **ARKANSAS** | ACRES: **170**

- 8,500' of Corps of Engineers frontage
- Approximately 60 acres of pasture, remaining acreage in timber
- Fenced perimeter, with majority of perimeter having been cleared for access
- Numerous build sites with incredible views of Lake Norfolk
- Extremely rare lake frontage with access to water in southwest corner
- Only property with walk-in access to over 300 acres of adjoining public hunting ground
- Loaded with deer and turkey
- Access off paved County Road 47
- Located 2 miles north of Henderson, AR
- 15 minute drive to Mountain Home, AR



8,500' OF CORPS OF ENGINEERS FRONTAGE

This 170 +/- acre tract on Lake Norfolk features an extraordinary 8,500 feet of Corps of Engineers frontage, offering a rare combination of privacy, scale, and direct connection to the water.



60 ACRES OF PASTURE



REMAINING ACREAGE IN TIMBER



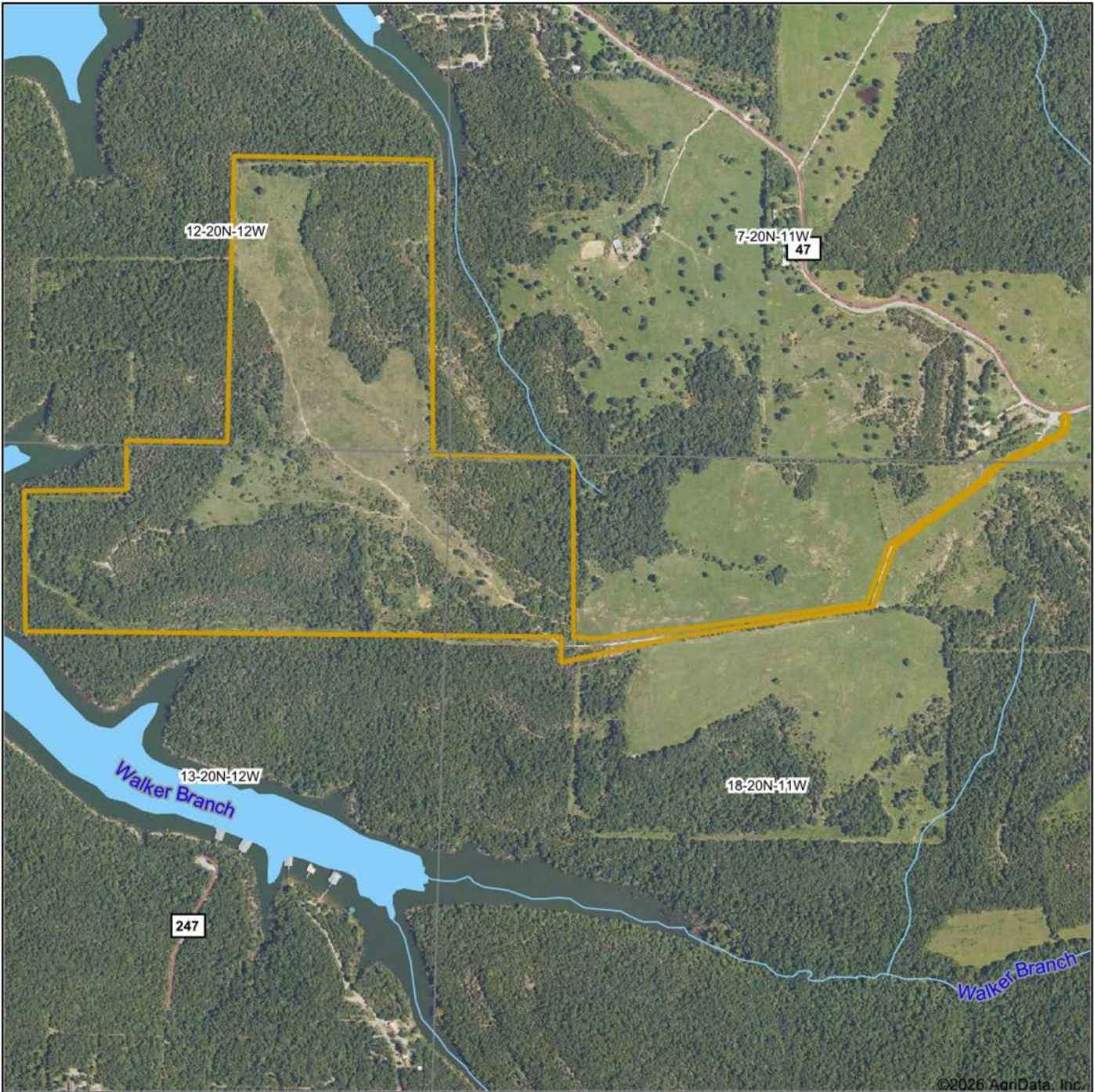
NUMEROUS BUILD SITES



ADDITIONAL PHOTOS

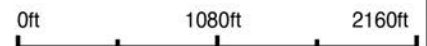


AERIAL MAP



©2026 AgriData, Inc.

Boundary Center: 36° 24' 32.28, -92° 12' 8.23



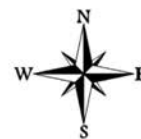
Maps Provided By:



© AgriData, Inc. 2025

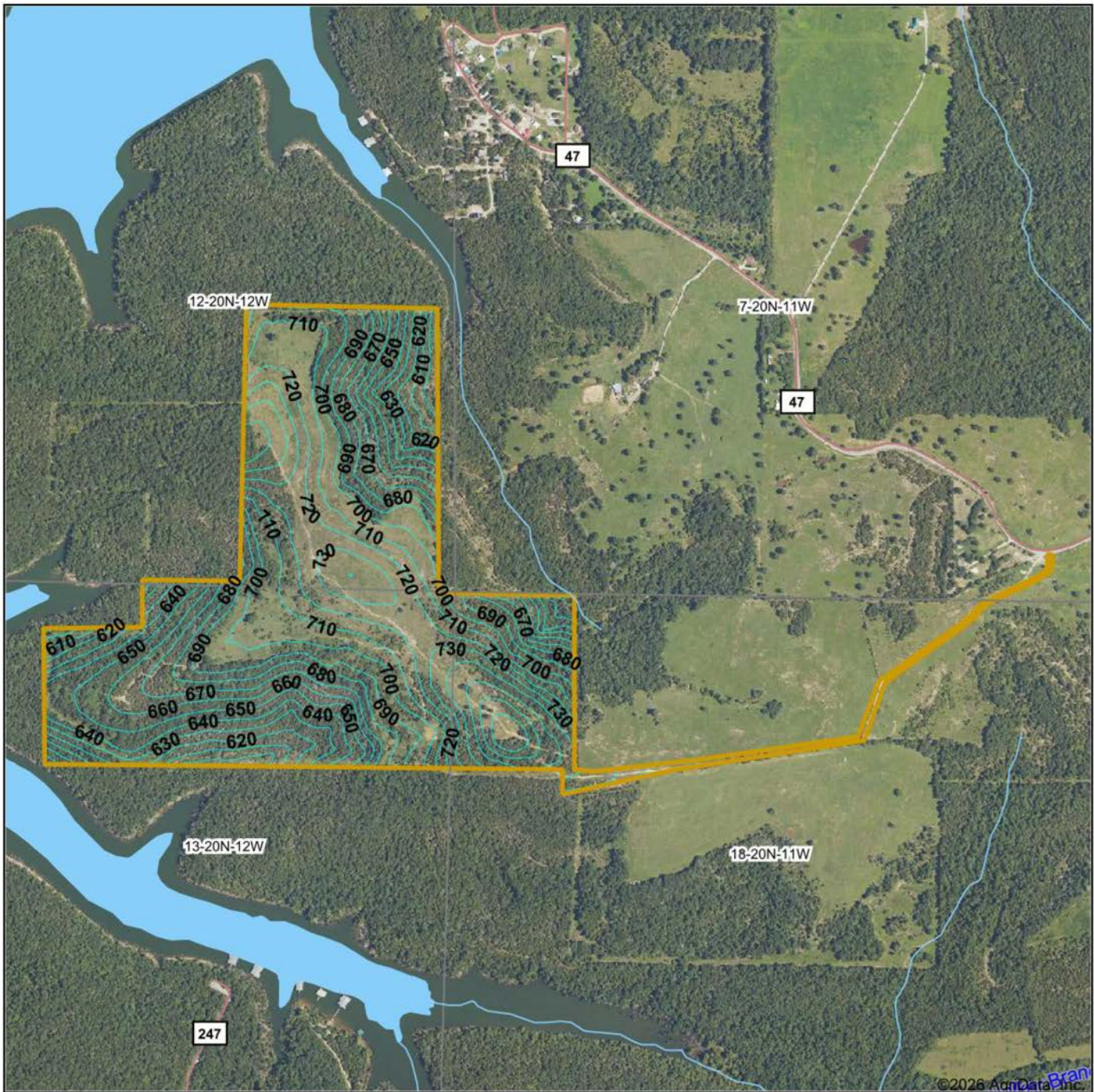
www.AgrDataInc.com

7-20N-11W
Baxter County
Arkansas



3/31/2026

TOPOGRAPHY MAP



©2026 AgriData, Inc.



Maps Provided By:



© AgriData, Inc. 2025 www.AgriDataInc.com

Source: USGS 10 meter dem

Interval(ft): 10.0

Min: 577.6

Max: 782.2

Range: 204.6

Average: 687.5

Standard Deviation: 41.54 ft

0ft 1115ft 2231ft

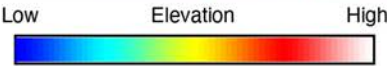
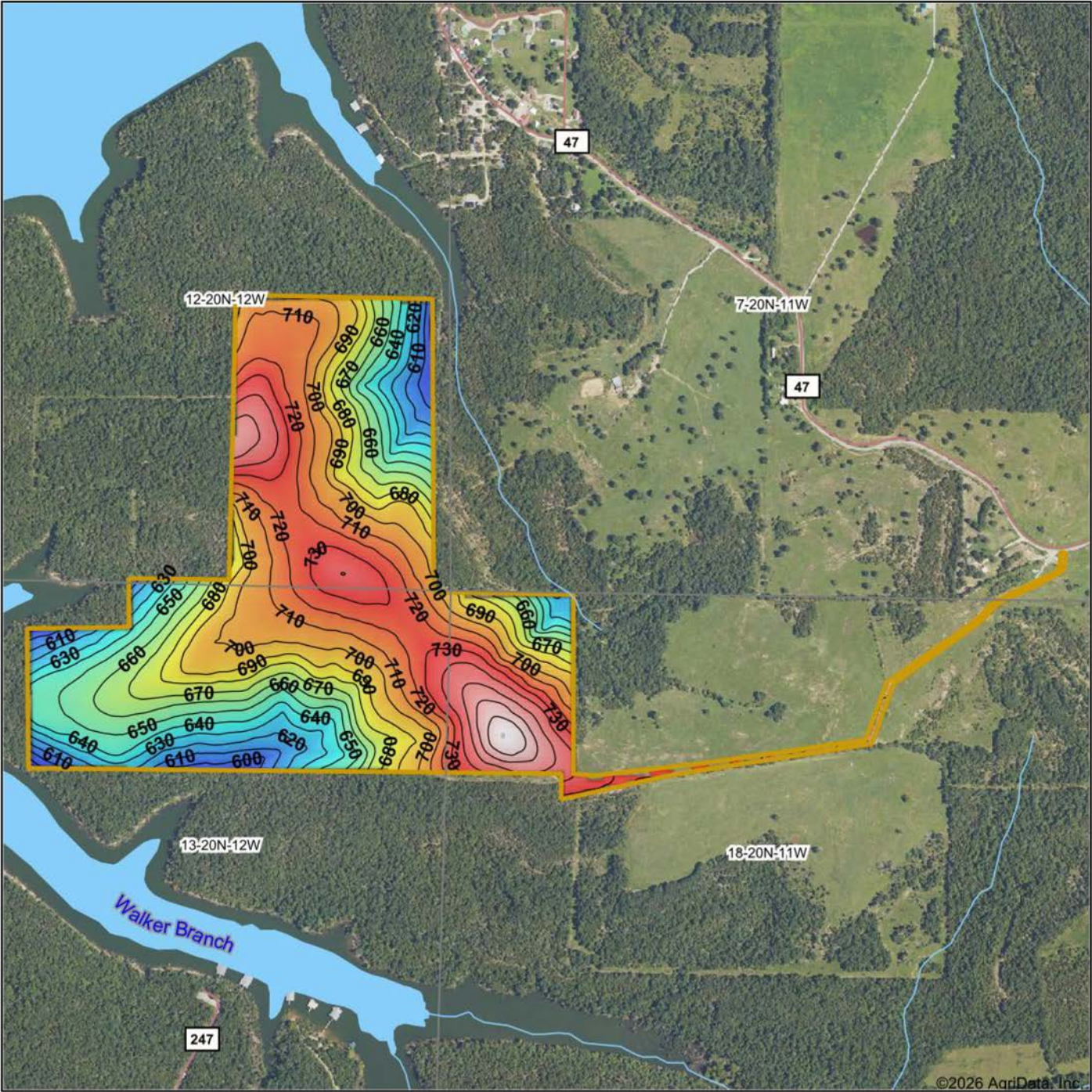


3/31/2026

7-20N-11W
Baxter County
Arkansas

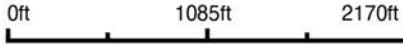
Boundary Center: 36° 24' 32.28, -92° 12' 8.23

HILLSHADE MAP



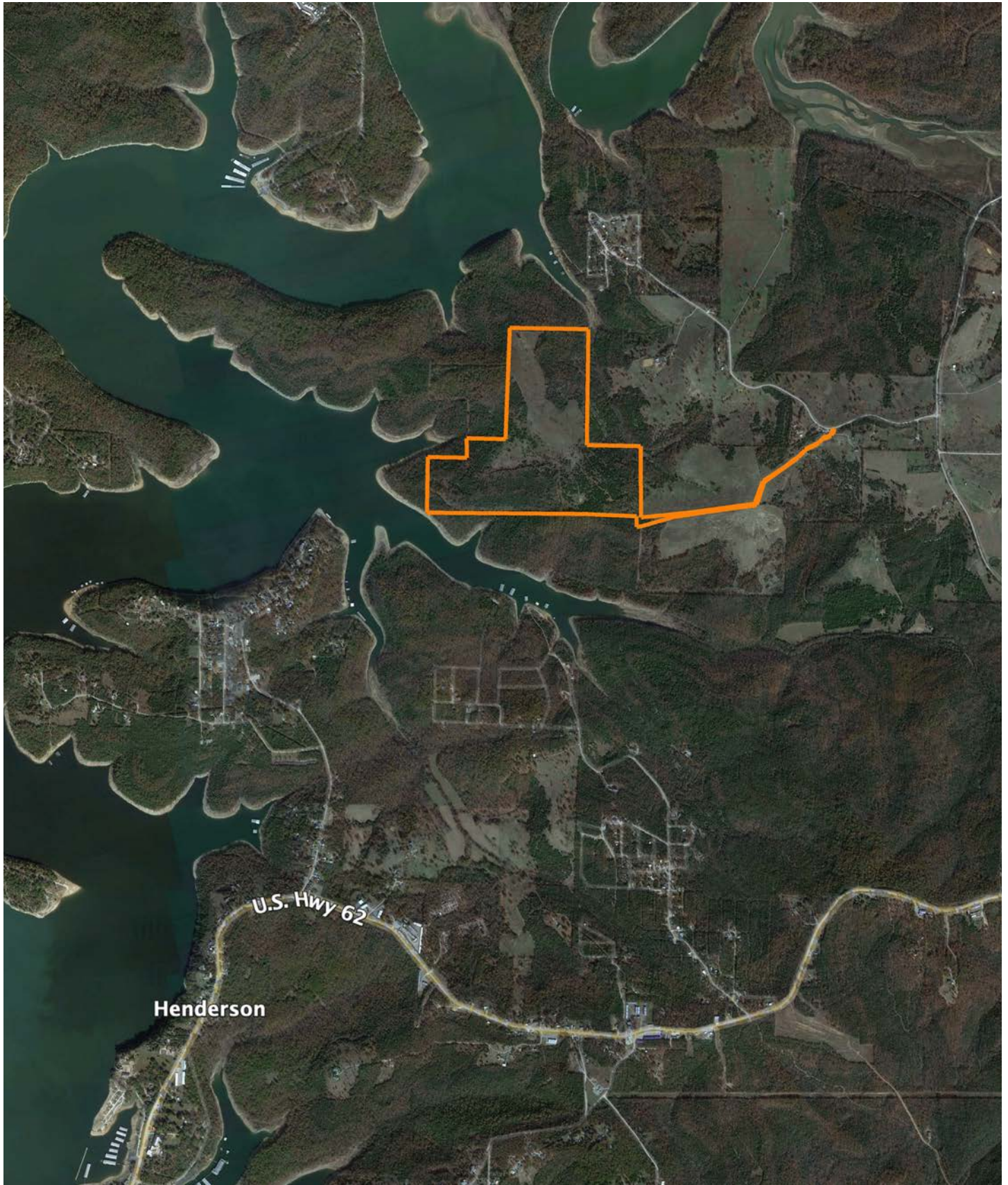
Maps Provided By:
surety
 CUSTOMIZED ONLINE MAPPING
 © AgriData, Inc. 2025 www.AgriDataInc.com

Source: USGS 10 meter dem
 Interval(ft): 10
 Min: 577.6
 Max: 782.2
 Range: 204.6
 Average: 687.5
 Standard Deviation: 41.54 ft



3/31/2026
7-20N-11W
Baxter County
Arkansas
 Boundary Center: 36° 24' 32.28, -92° 12' 8.23

OVERVIEW MAP



AGENT CONTACT

Actions speak louder than words. That's what Michael Rook believes to be the key factor to his success. Born in Jonesboro, Arkansas, he grew up hearing this phrase preached by his parents so much that it became ingrained in his life philosophy. Michael grew up in the Arkansas Delta surrounded by rice, bean, corn, and cotton farms—some of which he worked on in his youth. He attended Valley View High School and Arkansas State University before going to work in the natural gas distribution industry. After a travel-extensive career in natural gas, Michael longed to plant his roots back in the dirt he grew up on, and find a career that capitalized on his passion for the outdoors.

At Midwest Land Group, he's able to combine that passion with his extensive local market knowledge to see others achieve their goals of land ownership. Michael pours himself into every transaction as if it were his own. Getting a new client is easy, but he knows that it takes honesty and integrity to keep a client, and you can rest assured in that. He doesn't tell clients he'll give them 100%; he proves it. When Michael's not working, you can find him hunting all kinds of game, fishing, golfing or skiing. He resides in Jonesboro, Arkansas, with his wife, Anna, and daughter, Kingston.



MICHAEL ROOK, LAND AGENT
870.501.7095
MRook@MidwestLandGroup.com



MidwestLandGroup.com

This property is being offered by Midwest Land Group, LLC. 913.674.8010. All information provided by Midwest Land Group, LLC or their agents was acquired from sources deemed accurate and reliable, however we do not warrant its accuracy or completeness. Midwest Land Group, LLC assumes no liability for error, omission or investment results. Midwest Land Group, LLC. Licensed in Alabama, Arkansas, Illinois, Indiana, Iowa, Kansas, Kentucky, Louisiana, Minnesota, Mississippi, Missouri, Montana, Nebraska, Ohio, Oklahoma, South Dakota, Tennessee, Texas, Wisconsin, and Wyoming.