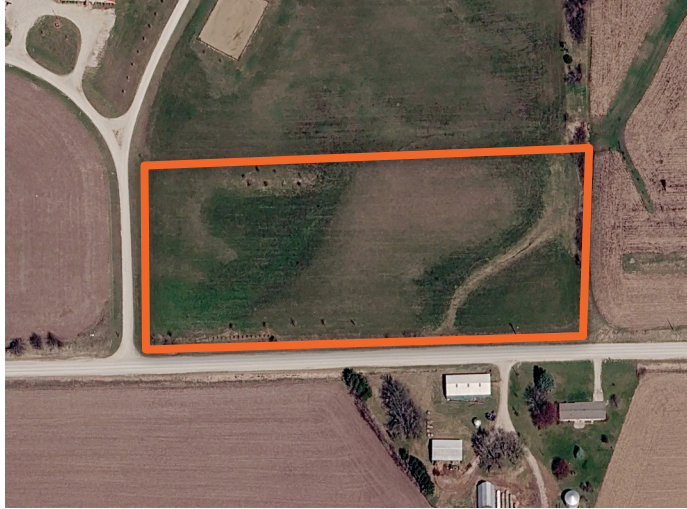


LAND FOR SALE

6.19 ACRE PALISADES EQUESTRIAN ESTATE LOT



PROPERTY FEATURES

- 6.19 acre corner lot (last lot available in the neighborhood)
- Located in Prole, just minutes south of Norwalk and the Des Moines Metro
- Less than 3/4 mile off paved Highway 28
- Enjoy living in the horse and livestock-friendly Palisades Equestrian Estates
- Bring your own builder - perfect homesteading opportunity
- Water, power, and fiber optic at the road
- Low-traffic area for peaceful living



For more information, contact:

AARON CREGER, Land Agent

515.491.9567 | ACreger@MidwestLandGroup.com

MidwestLandGroup.com BUYERS, SELLERS, AND LAND – CONNECTED

This property is being offered by Midwest Land Group, LLC, 7111 W. 151st Street, Ste. 27, Overland Park, KS 66223, 913.674.8010. Licensed in AL, AR, IA, IL, IN, KS, KY, LA, MN, MO, MS, MT, NE, OH, OK, SD, TN, TX, WI, and WY.



COUNTY: **WARREN**

STATE: **IOWA**

ACRES: **6.19**

