

MIDWEST LAND GROUP PRESENTS

19 ACRES IN

---

# MIAMI COUNTY KANSAS



[MidwestLandGroup.com](http://MidwestLandGroup.com)

MIDWEST LAND GROUP IS HONORED TO PRESENT

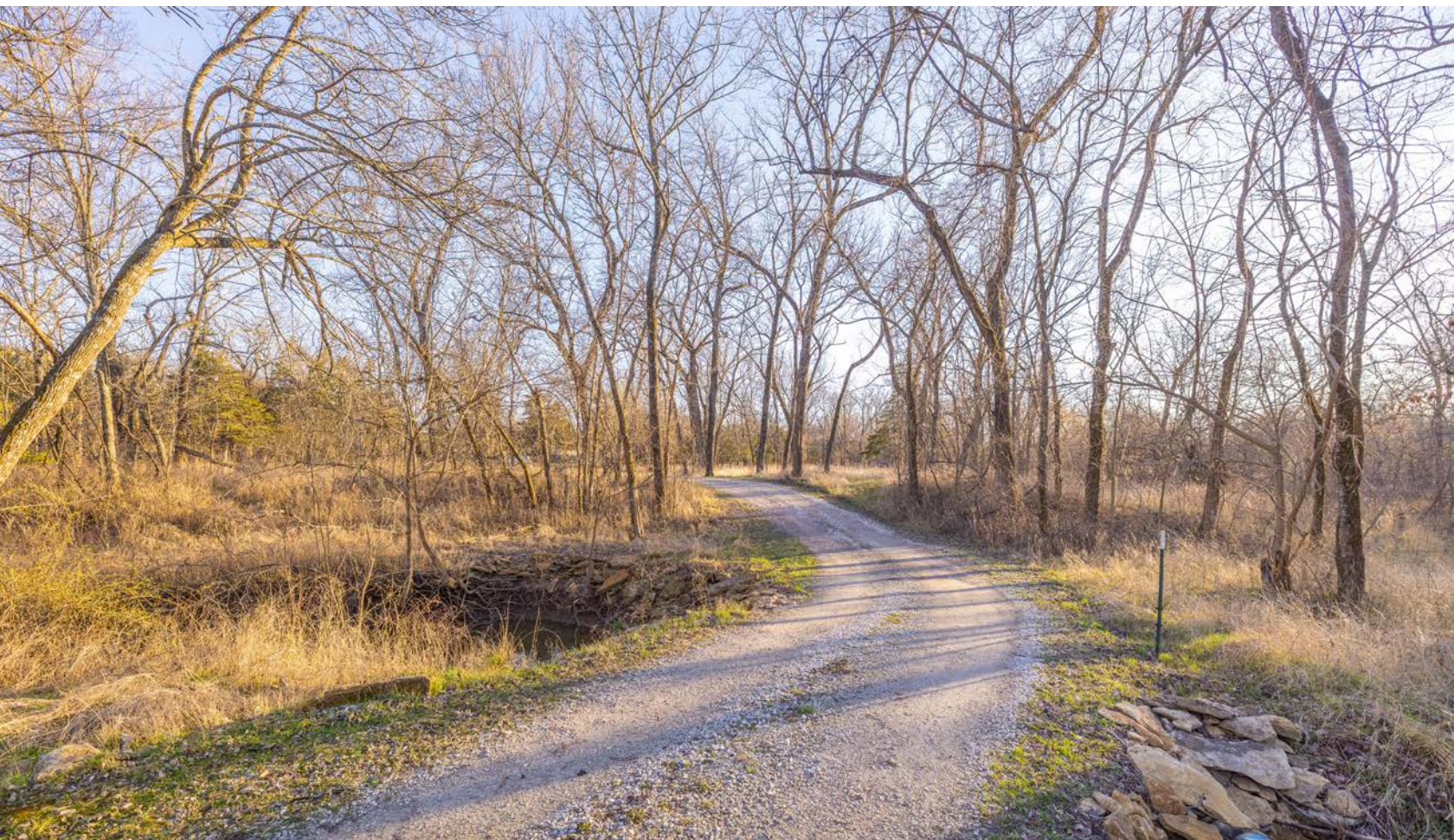
# BEAUTIFUL HOME ON 19 ACRES IN MIAMI COUNTY

This beautiful property offers a rare opportunity for private country living in Miami County. Nestled on approximately 19 acres, the property features a charming 1,870 square foot home with 3 bedrooms and 2 bathrooms, providing plenty of space for comfortable living.

Perched on a hill nearly one mile off the blacktop, the home offers exceptional privacy and peaceful surroundings. The property also includes a 30'x60' shop, perfect for storage, equipment, or hobbies. Outdoor enthusiasts will appreciate the large food plot located just off the back

porch, where the current owner has successfully harvested two impressive bucks in the past two seasons. The land is further enhanced by a pond and a creek, adding natural beauty and recreational opportunities.

Inside, the home features an updated kitchen and a spacious master bedroom, making it an ideal retreat from the hustle and bustle of city life. Conveniently located just 45 minutes from Overland Park, this property offers the perfect balance of secluded country living with easy access to city amenities.



# PROPERTY FEATURES

COUNTY: **MIAMI** | STATE: **KANSAS** | ACRES: **19**

- 1,870 square foot home with 3 bedrooms, 2 bathrooms
- Roughly 2-acre food plot behind the home
- Secluded hilltop
- 30'x60' shop for storage or hobbies with electrical
- Excellent whitetail hunting history
- Stocked pond and creek on the property
- Updated kitchen and spacious master bedroom
- New carpet throughout June 2024
- Beautiful views and privacy throughout the property
- APEC Water Systems full house filtration, water softener, & under sink 5 stage reverse osmosis system for excellent drinking water. New June of 2024
- 30'x30' basketball court installed June 2025
- 45 minutes to Overland Park for convenient access to amenities



# 1,870 SQUARE FOOT HOME

Nestled on approximately 19 acres, the property features a charming 1,870 square foot home with 3 bedrooms and 2 bathrooms, providing plenty of space for comfortable living.



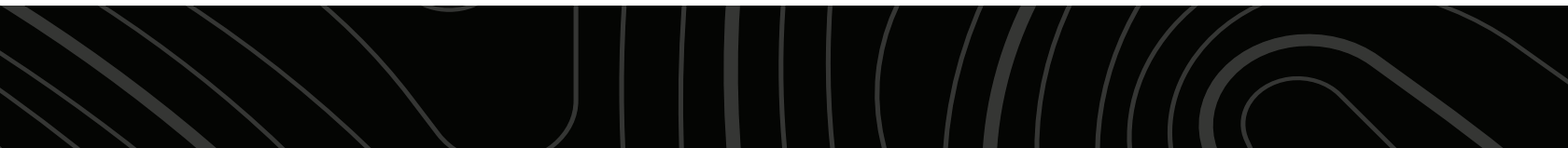
# 3 BEDROOM, 2 BATHROOM



# POND AND CREEK

---

Perched on a hill nearly one mile off the blacktop, the home offers exceptional privacy and peaceful surroundings. The land is further enhanced by a pond and a creek, adding natural beauty and recreational opportunities.



## 2-ACRE FOOD PLOT

---



## 30'X60' SHOP

---



# EXCELLENT WHITETAIL HUNTING



# TRAIL CAM PICTURES



# AERIAL MAP

## Aerial Map



Company:   
Address:   
Address:   
Phone:



Miami, KS

Boundary Center:  
 $38^{\circ} 24' 8.35, -95^{\circ} 2' 30.33$



Maps Provided By:

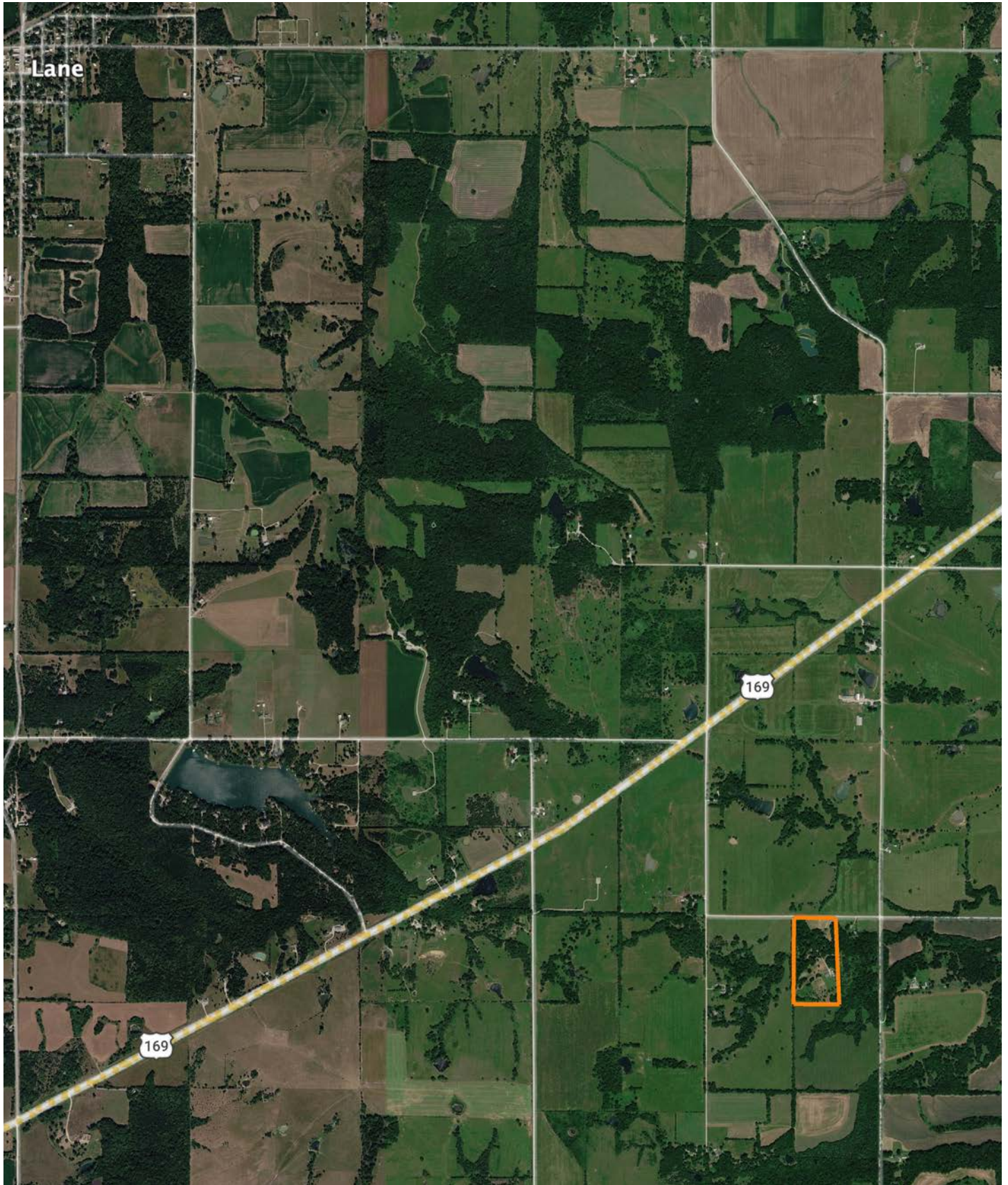


© AgriData, Inc. 2023

[www.AgriDataInc.com](http://www.AgriDataInc.com)



# OVERVIEW MAP



# AGENT CONTACT

Agent Clay Craft was born and raised in Madison, Mississippi, and grew up with a great passion for the outdoors. As a well-seasoned hunter, Clay managed to harvest his first deer at the age of 4. Shortly after, he started having success with bow hunting. Growing up in a family that was full of hunting and the outdoors, Clay always knew he wanted to make a career out of his passion.

Now, living in Overland Park, Kansas, Clay hunts on his family farms in Kansas and Missouri every year. He's been a part of several hunting TV shows and is currently filming with Heartland Bowhunter, an award-winning show on The Outdoor Channel, which he's done for over a decade. Clay stays true to his roots and loves bow hunting the giant whitetails that the Midwest has to offer. When he's not working, Clay enjoys spending time with his family, playing sports, and setting up his family farms for the next deer and turkey seasons.

Clay takes pride in how to improve and create better hunting farms. From increasing cover to strategic food plot placements, he has the knowledge to find and take farms to the next level. With the experience of hunting thousands of acres, Clay's love for land can't be missed. If you're in the market to buy or sell land in Eastern Kansas, let Clay put his knowledge and expertise to work for you.



**CLAY CRAFT,**  
LAND AGENT  
**913.677.0299**  
CCraft@MidwestLandGroup.com



**MidwestLandGroup.com**

This property is being offered by Midwest Land Group, LLC. 913.674.8010. All information provided by Midwest Land Group, LLC or their agents was acquired from sources deemed accurate and reliable, however we do not warrant its accuracy or completeness. Midwest Land Group, LLC assumes no liability for error, omission or investment results. Midwest Land Group, LLC. Licensed in Alabama, Arkansas, Illinois, Indiana, Iowa, Kansas, Kentucky, Louisiana, Minnesota, Mississippi, Missouri, Montana, Nebraska, Ohio, Oklahoma, South Dakota, Tennessee, Texas, Wisconsin, and Wyoming.