

MIDWEST LAND GROUP PRESENTS

48 ACRES IN

JASPER COUNTY MISSOURI



MidwestLandGroup.com

MIDWEST LAND GROUP IS HONORED TO PRESENT

CHARMING 48 +/- ACRE JASPER COUNTY HOBBY FARM

This exceptional 48 +/- acre farm offers the perfect blend of productivity, rural charm, and comfortable country living. The property features highly productive pasture that is fully fenced and cross-fenced, making it ideal for cattle or livestock operations. A well-designed cattle working area provides efficiency for handling livestock, while three ponds and additional water sources ensure dependable water for your herd year-round. The land consists of primary fescue for livestock grazing, but it does offer a 7 +/- acres field of native prairie grass.

The beautifully remodeled 3 bedroom, 2 bathroom farmhouse with approximately 1,600 square feet of living space, offers a comfortable home base to enjoy peaceful country living. For storage and workspace, you'll find a 5-car garage/shop with lean-to, perfect for equipment,

vehicles, or projects, along with a large equipment and hay barn designed to support your farming or ranching needs.

Located in the Golden City School District, this property offers a great rural setting while remaining conveniently close to town. You'll be just 9 minutes from Golden City, 10 minutes from Jasper, and only 20 minutes from Carthage, giving you easy access to amenities while enjoying the privacy of the countryside.

Whether you're looking for a working cattle farm, hobby farm, or a peaceful country property with room to grow, this well-maintained acreage offers an outstanding opportunity in Southwest Missouri! Call land agent Kellen Bounous today to schedule your showing!



PROPERTY FEATURES

COUNTY: **JASPER** | STATE: **MISSOURI** | ACRES: **48**

- 48 +/- acres of productive pasture
- Fully fenced and cross-fenced
- Cattle working area
- Water for livestock
- 3 ponds
- 7 +/- acres of native prairie grass
- 3 bed, 2 bath, 1,600 square foot farmhouse
- 5 car garage/shop with lean-to
- Large equipment/hay barn
- Golden City School District
- 9 minutes to Golden City
- 10 minutes to Jasper
- 20 minutes to Carthage



REMODELED FARMHOUSE

The beautifully remodeled 3-bedroom, 2-bath farmhouse with approximately 1,600 square feet of living space, offers a comfortable home base to enjoy peaceful country living.



ADDITIONAL INTERIOR PHOTOS



48 +/- ACRES OF PRODUCTIVE PASTURE

The land consists of primary fescue for livestock grazing, but it does offer a 7 +/- acres field of native prairie grass.



TURN-KEY LIVESTOCK SETUP

The property features highly productive pasture that is fully fenced and cross-fenced, making it ideal for cattle or livestock operations. A well-designed cattle working area provides efficiency for handling livestock, while three ponds and additional water sources ensure dependable water for your herd year-round.



LARGE EQUIPMENT/HAY BARN



GARAGE/SHOP WITH LEAN-TO



AERIAL MAP



Boundary Center: 37° 20' 3.27, -94° 9' 30.33

0ft 279ft 559ft



Maps Provided By:



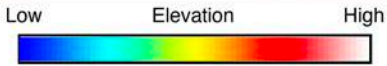
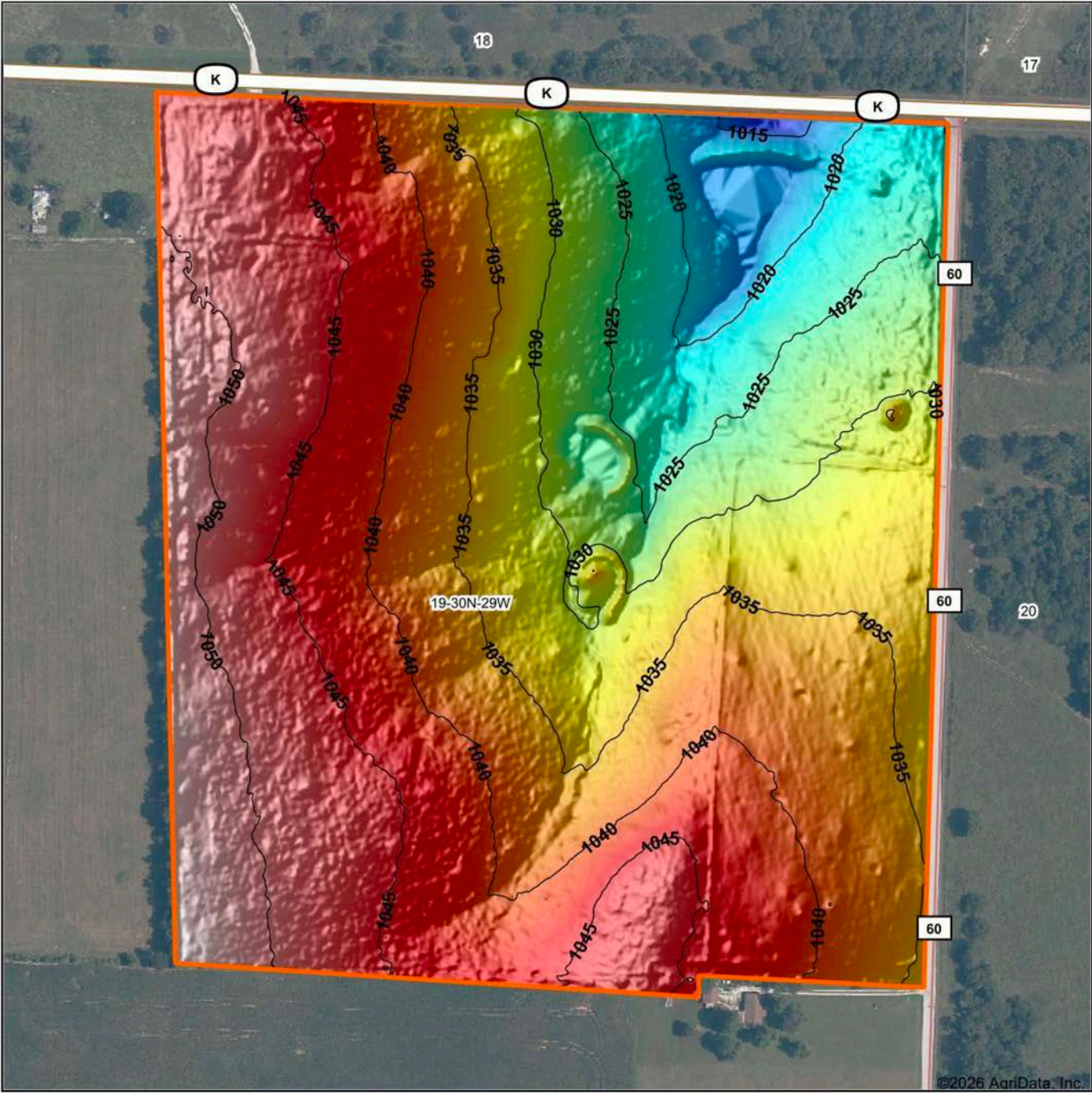
© AgriData, Inc. 2025 www.AgriDataInc.com

19-30N-29W
Jasper County
Missouri



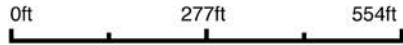
3/2/2026

HILLSHADE MAP



Maps Provided By:
surety
 CUSTOMIZED ONLINE MAPPING
 © AgriData, Inc. 2025 www.AgriDataInc.com

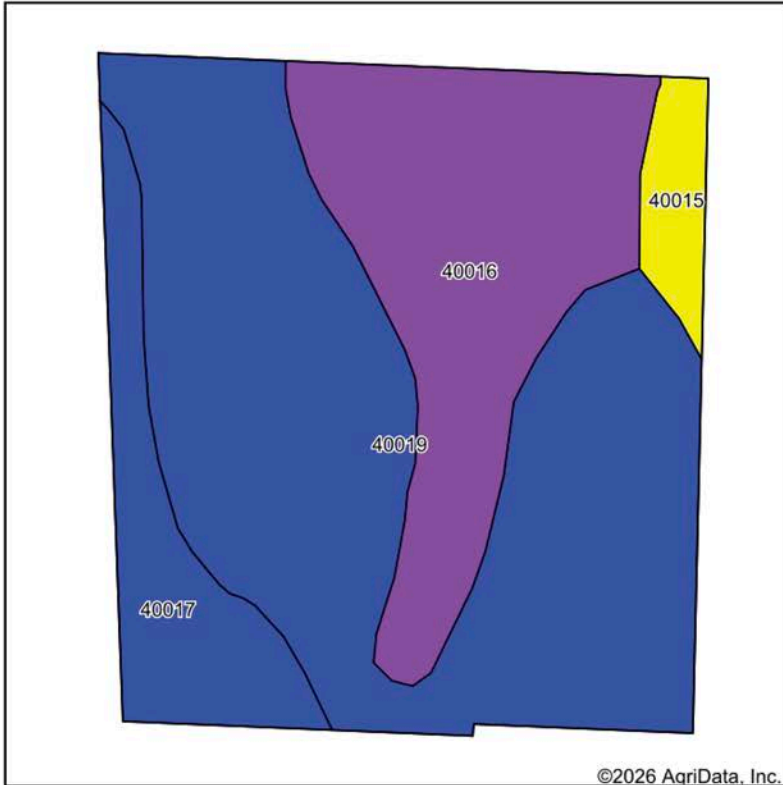
Source: USGS 1 meter dem
 Interval(ft): 5
 Min: 1,009.7
 Max: 1,054.8
 Range: 45.1
 Average: 1,037.2
 Standard Deviation: 9.22 ft



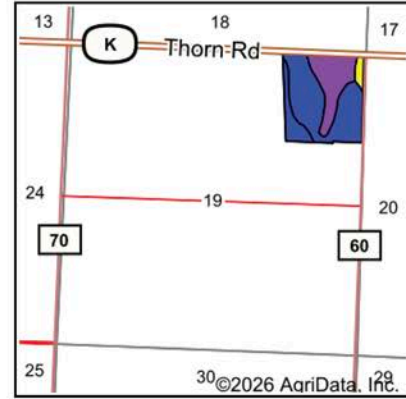
19-30N-29W
Jasper County
Missouri

Boundary Center: 37° 20' 3.08, -94° 9' 30.07

SOILS MAP



Soils data provided by USDA and NRCS.



State: **Missouri**
 County: **Jasper**
 Location: **19-30N-29W**
 Township: **Lincoln**
 Acres: **49.45**
 Date: **3/2/2026**



Maps Provided By:



Area Symbol: MO097, Soil Area Version: 29

Code	Soil Description	Acres	Percent of field	Non-Irr Class Legend	Soil Drainage	Non-Irr Class *c	*n NCCPI Overall	*n NCCPI Corn	*n NCCPI Small Grains	*n NCCPI Soybeans
40019	Newtonia-Eldorado silt loams, 1 to 3 percent slopes	28.04	56.7%		Well drained	Ile	85	85	73	68
40016	Eldorado very gravelly silt loam, 3 to 8 percent slopes, very stony	14.01	28.3%		Well drained	Vls	52	52	39	26
40017	Maplegrove silt loam, 1 to 3 percent slopes	5.58	11.3%		Moderately well drained	Ile	74	74	68	60
40015	Eldorado silt loam, 1 to 3 percent slopes, very stony	1.82	3.7%		Well drained	IVs	63	63	45	33
Weighted Average						3.21	*n 73.6	*n 73.6	*n 61.8	*n 53.9

*n: The aggregation method is "Weighted Average using all components"

*c: Using Capabilities Class Dominant Condition Aggregation Method

AGENT CONTACT

With a passion for customer service, Kellen Bounous is ready to help his clients achieve their land dreams. Sellers and buyers alike benefit from his drive and determination, as well as his promise to stick by them throughout the entire process, going above and beyond to ensure the smoothest and most stress-free transaction possible.

Kellen's commitment to customer service comes from a background of managing more than 200 farmers and truckers in the grain industry. Previously, he was a district sales manager for an ag company, as well as a grain merchandiser for a grain company, buying and selling corn, soybeans, and wheat in Missouri, Kansas, and Arkansas.

Born in Springfield, MO, Kellen grew up on a farm near Monett, MO, helping his dad with row crops and Kentucky 31 fescue seed. After graduating from Monett High School, he attended the University of Missouri-Columbia, where he obtained a degree in Agriculture Business as a three-year student-athlete wrestler. Kellen earned Master's in Business Administration from William Woods University in Fulton, MO, and, to this day, still helps his dad with harvest on the farm when he can.

Kellen has a strong passion for anything outdoors, in particular chasing whitetail deer. He enjoys bow hunting turkey, duck hunting, farming, fishing, and golf. He serves as a volunteer wrestling coach for Carthage High School and lives in Carthage, MO, with his wife, Torie.



KELLEN BOUNOUS,
LAND AGENT
417.313.3123
KBounous@MidwestLandGroup.com



MidwestLandGroup.com

This property is being offered by Midwest Land Group, LLC. 913.674.8010. All information provided by Midwest Land Group, LLC or their agents was acquired from sources deemed accurate and reliable, however we do not warrant its accuracy or completeness. Midwest Land Group, LLC assumes no liability for error, omission or investment results. Midwest Land Group, LLC. Licensed in Alabama, Arkansas, Illinois, Indiana, Iowa, Kansas, Kentucky, Louisiana, Minnesota, Mississippi, Missouri, Montana, Nebraska, Ohio, Oklahoma, South Dakota, Tennessee, Texas, Wisconsin, and Wyoming.