

MIDWEST LAND GROUP PRESENTS

10 ACRES IN

---

# JACKSON COUNTY ILLINOIS

6 NARYA TRACE, CARBONDALE, IL 62902



[MidwestLandGroup.com](http://MidwestLandGroup.com)

MIDWEST LAND GROUP IS HONORED TO PRESENT

# SECLUDED 10 +/- ACRES WITH HOME IN BEAUTIFUL SOUTHERN ILLINOIS

This property is located just south of Carbondale, Illinois, offering easy access to numerous recreational destinations, including Crab Orchard National Wildlife Refuge and Giant City State Park. It is also in close proximity to the SIU campus and to all your shopping needs, ensuring both convenience and tranquility.

The home is a beautifully constructed D-style log cabin, offering over 2,400 square feet of living space. It features four bedrooms and two full baths, with the master suite on the main floor. The kitchen, living, and dining areas are open-concept, and the home also includes a 24'x12' enclosed porch, along with a large deck that features a

hot tub. The walkout basement includes three additional bedrooms, a full bath, laundry, and an attached 24'x24' garage.

The property spans 10 acres with a small pond, a mix of wooded and open land, and beautiful landscaping. A 45'x50' fenced garden area sits alongside outbuildings, including a 32'x24' pole barn with a concrete floor, a 22'x20' carport with a concrete slab, and a 12'x20' storage shed.

This property would make a great investment property for a vacation rental, given its location.



## PROPERTY FEATURES

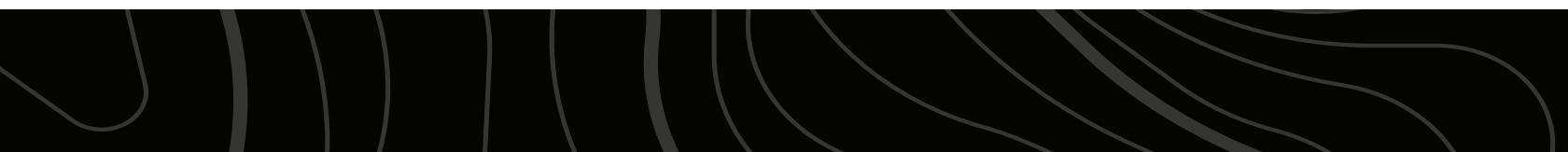
COUNTY: **JACKSON** | STATE: **ILLINOIS** | ACRES: **10**

- Small pond
- 2,400 square foot home with attached garage
- D-style log home
- Geothermal HVAC
- Large deck with hot tub
- Outbuildings for additional storage
- Nearby amenities
- Giant City State Park
- Cedar Lake
- Little Grassy Lake
- Devils Kitchen Lake
- Crab Orchard Lake
- Minutes from Southern Illinois University

# D-STYLE LOG HOME

---

The home is a beautifully constructed D-style log cabin, offering over 2,400 square feet of living space. It features four bedrooms and two full baths, with the master suite on the main floor.



# LARGE DECK WITH HOT TUB

---



# SMALL POND

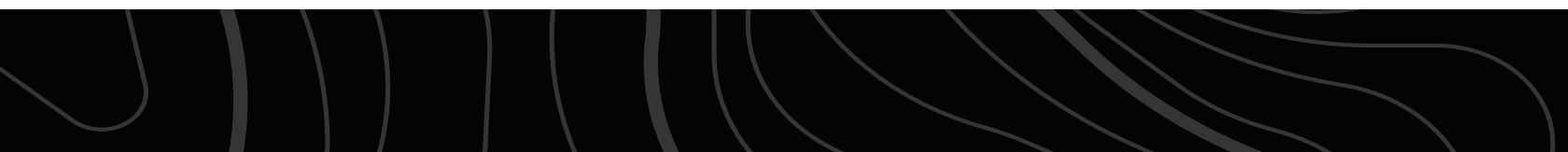
---



# OUTBUILDINGS FOR ADDITIONAL STORAGE

---

A 45'x50' fenced garden area sits alongside outbuildings, including a 32'x24' pole barn with a concrete floor, a 22'x20' carport with a concrete slab, and a 12'x20' storage shed.



# TOPOGRAPHY MAP



©2026 AgriData, Inc.



Maps Provided By:  
**surety**  
CUSTOMIZED ONLINE MAPPING  
© AgriData, Inc. 2025 www.AgriDataInc.com

Source: USGS 1 meter dem  
Interval(ft): 10.0  
Min: 415.8  
Max: 464.8  
Range: 49.0  
Average: 439.4  
Standard Deviation: 16.01 ft

0ft 265ft 530ft

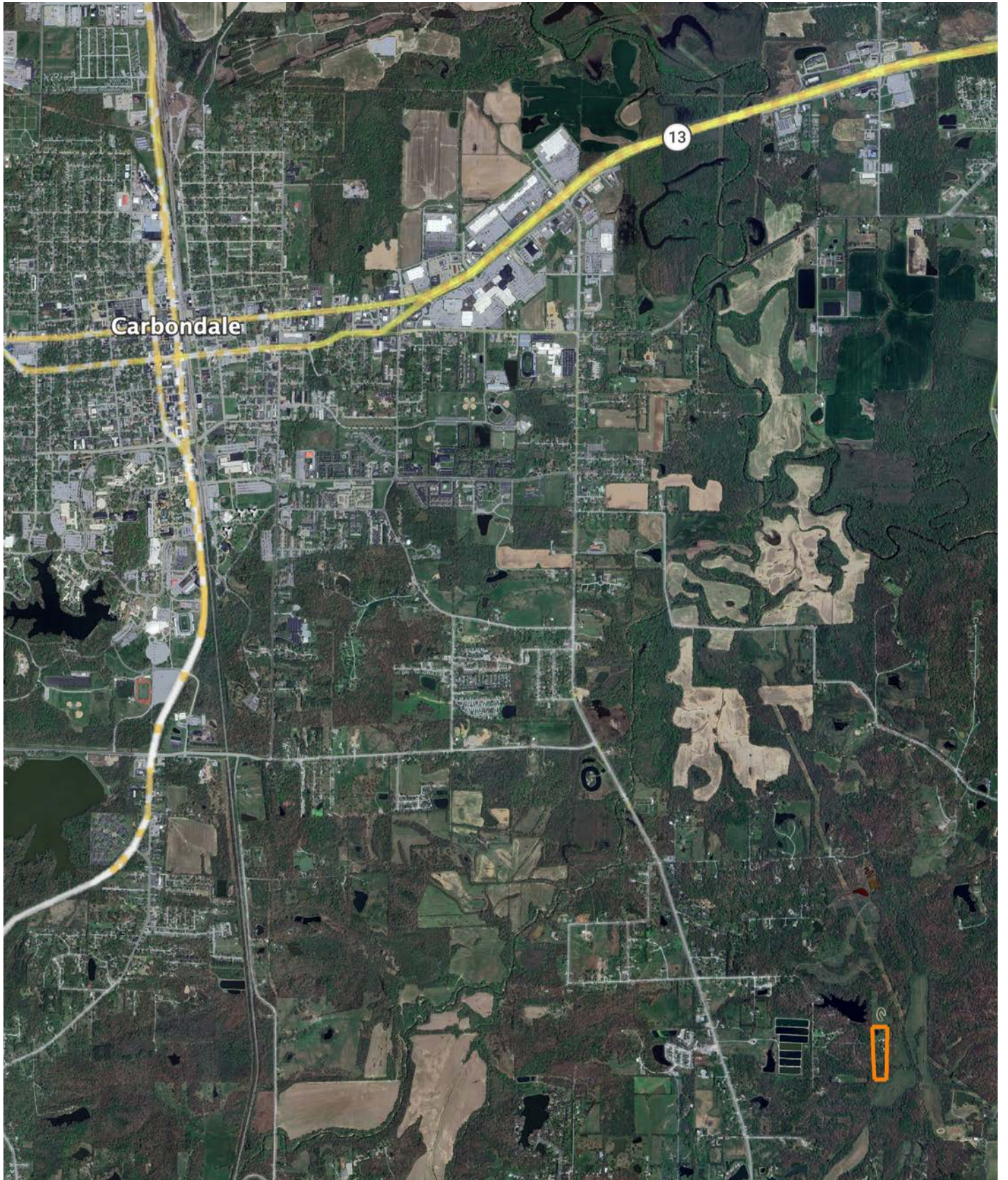


3/4/2026

**1-10S-1W**  
**Jackson County**  
**Illinois**

Boundary Center: 37° 40' 53.92, -89° 9' 41.02

# OVERVIEW MAP



# AGENT CONTACT

If you're looking to buy or sell land in Southern Illinois, look no further than agent Scott Schroeder. Known for his hard work ethic and honesty, Scott excels working with people and their various personalities. He knows what it takes to talk with and understand both buyers and sellers to get the job done.

Scott grew up in Watseka, IL, and attended Watseka Community High School before jumping into a career in construction and construction management, working in the trades for over 30 years. He served as a fireman for more than 25 years and was a Fire Chief of a volunteer fire department in central Illinois before moving to the southern part of the state.

Today, Scott and his wife, Jenny, live in Alto Pass, IL, where they own a winery that hosts a vineyard and small orchard. He's become an award-winning winemaker, and the restaurant boasts an array of fresh and locally sourced dishes. In 2021, he won the Governor's Cup for a peach wine in Illinois, having used estate-grown peaches. Understanding the importance of land for farming has become essential even for this smaller operation, something Scott's able to translate over to help his Midwest Land Group clients. He's been buying and selling land for himself for years and loves sharing that joy with others. When he's not working, you can usually find him doing something outdoors, most likely, deer or turkey hunting.



**SCOTT SCHROEDER,**  
LAND AGENT  
**618.364.3239**  
SSchroeder@MidwestLandGroup.com



**MidwestLandGroup.com**

This property is being offered by Midwest Land Group, LLC. 913.674.8010. All information provided by Midwest Land Group, LLC or their agents was acquired from sources deemed accurate and reliable, however we do not warrant its accuracy or completeness. Midwest Land Group, LLC assumes no liability for error, omission or investment results. Midwest Land Group, LLC. Licensed in Alabama, Arkansas, Illinois, Indiana, Iowa, Kansas, Kentucky, Louisiana, Minnesota, Mississippi, Missouri, Montana, Nebraska, Ohio, Oklahoma, South Dakota, Tennessee, Texas, Wisconsin, and Wyoming.