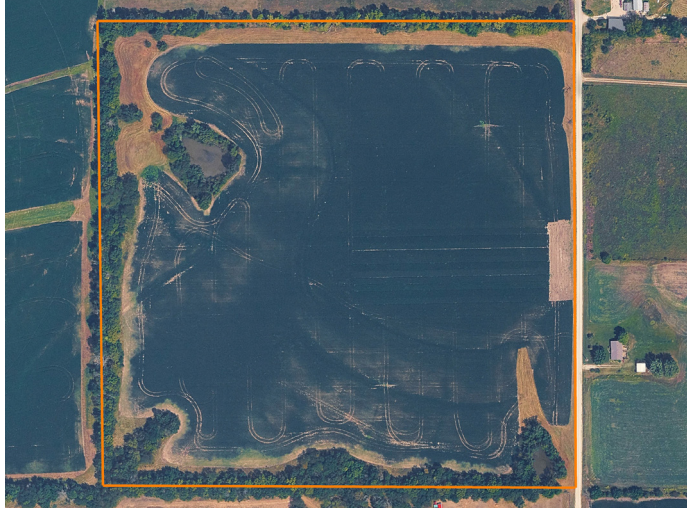


# LAND FOR SALE

## BUILD SITE ON A QUALITY TILLABLE FARM



### PROPERTY FEATURES

- 32 +/- acres tillable
- Additional acres could be converted to tillable
- 2 ponds
- Terraced with tile outlets
- Grid sampled for fertilizer & lime requirements
- Tree-lined for seclusion
- Cover crop planted
- Winter fertilizer applied
- Great build site
- Full utilities at the road



COUNTY: **CASS**

STATE: **MISSOURI**

ACRES: **40**

For more information, contact:

**PAUL LOWRY**, Land Agent

816.500.2513 | PLowry@MidwestLandGroup.com

**MidwestLandGroup.com** BUYERS, SELLERS, AND LAND – CONNECTED

This property is being offered by Midwest Land Group, LLC, 7111 W. 151st Street, Ste. 27, Overland Park, KS 66223, 913.674.8010.  
Licensed in AL, AR, IA, IL, IN, KS, KY, LA, MN, MO, MS, MT, NE, OH, OK, SD, TN, TX, WI, and WY.

