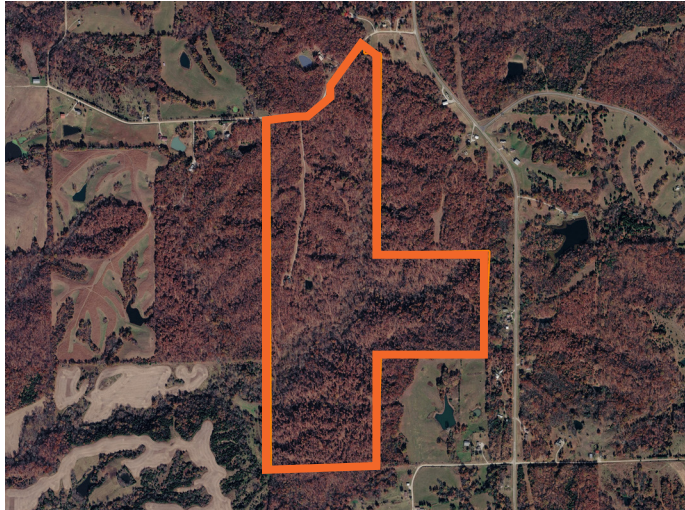


LAND FOR SALE

LARGE TIMBER HUNTING TRACT



PROPERTY FEATURES

- Predominantly timber
- Cleared ridges
- Trail system
- Pond
- Furnished cabin
- Barn
- Creek
- Diverse topography
- Excellent hunting



COUNTY: **SULLIVAN**

STATE: **MISSOURI**

ACRES: **185**



For more information, contact:

BRAD PRATER, Land Agent

660.236.4281 | BPrater@MidwestLandGroup.com

MidwestLandGroup.com BUYERS, SELLERS, AND LAND – CONNECTED

This property is being offered by Midwest Land Group, LLC, 7111 W. 151st Street, Ste. 27, Overland Park, KS 66223, 913.674.8010. Licensed in AL, AR, IA, IL, IN, KS, KY, LA, MN, MO, MS, MT, NE, OH, OK, SD, TN, TX, WI, and WY.

