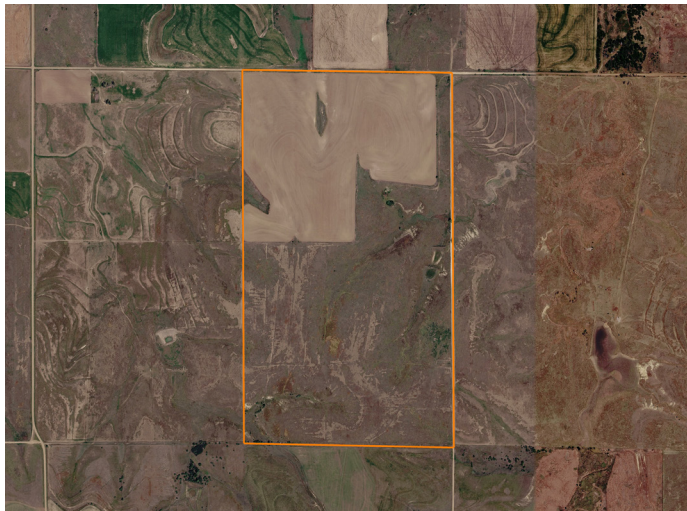


# LAND FOR SALE

## AFFORDABLE CROPLAND AND PASTURE IN RUSH COUNTY



### PROPERTY FEATURES

- Southeast of Rush Center, KS
- 2 miles south of Highway 96
- 100 +/- acres cropland
- Crop-share tenancy
- 183 +/- acres of pasture
- New water well
- Ponds
- Mineral rights convey
- Limestone homestead remnants
- Upland bird hunting



COUNTY: **RUSH**

STATE: **KANSAS**

ACRES: **238**



For more information, contact:

**COLE SCHUMACHER**, Land Agent

**785.624.2191** | [CSchumacher@MidwestLandGroup.com](mailto:CSchumacher@MidwestLandGroup.com)

**MidwestLandGroup.com** BUYERS, SELLERS, AND LAND – CONNECTED

This property is being offered by Midwest Land Group, LLC, 7111 W. 151st Street, Ste. 27, Overland Park, KS 66223, 913.674.8010.  
Licensed in AL, AR, IA, IL, IN, KS, KY, LA, MN, MO, MS, MT, NE, OH, OK, SD, TN, TX, WI, and WY.

