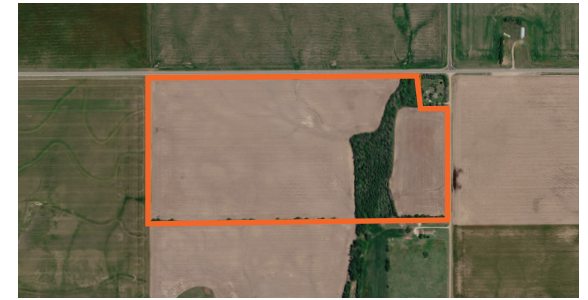


LAND FOR SALE

MIXED USE RICE COUNTY TILLABLE

COUNTY: **RICE**
STATE: **KANSAS**
ACRES: **75.5**



PROPERTY FEATURES

- 75.5 taxable acres
- 69.5 USDA acres
- Class II & III Soils
- 65.1 NCCPI score
- Smolan & Clark soils
- 7+ acres of timber
- Power, rural water access
- Fiber Optic cable available
- Deer Unit 6
- Multiple build site options
- S28,T20,R6W
- \$705.90 taxes



For more information, contact:

TYLER HEIL, Land Agent

620.869.7083 | THeil@MidwestLandGroup.com

MidwestLandGroup.com



This property is being offered by Midwest Land Group, LLC, 7111 W. 151st Street, Ste. 27, Overland Park, KS 66223, 913.674.8010.
Licensed in AL, AR, IA, IL, IN, KS, KY, LA, MN, MO, MS, MT, NE, OH, OK, SD, TN, TX, WI, and WY.