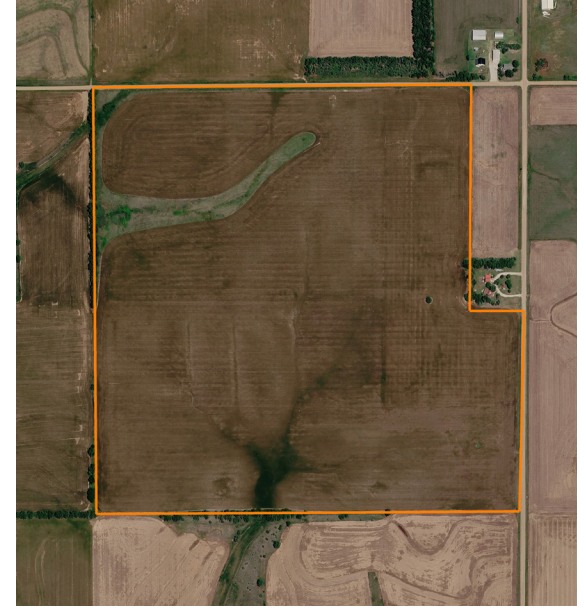


LAND FOR SALE

RICE COUNTY DRYLAND TILLABLE - TRACT 3

COUNTY: **RICE**
STATE: **KANSAS**
ACRES: **150**



PROPERTY FEATURES

- 149.26 FSA acres
- Class II & III soils
- Crete & Lancaster Loam soils
- Easy access
- Great terraces/waterways
- Upland bird habitat
- S34, T18, R6W
- \$2,028.30 taxes
- Power at road
- 6 miles to Little River
- 21 miles to McPherson
- 29 miles to Hutchinson



For more information, contact:

TYLER HEIL, Land Agent

620.869.7083 | THeil@MidwestLandGroup.com

MidwestLandGroup.com

This property is being offered by Midwest Land Group, LLC, 7111 W. 151st Street, Ste. 27, Overland Park, KS 66223, 913.674.8010.
Licensed in AL, AR, IA, IL, IN, KS, KY, LA, MN, MO, MS, MT, NE, OH, OK, SD, TN, TX, WI, and WY.

