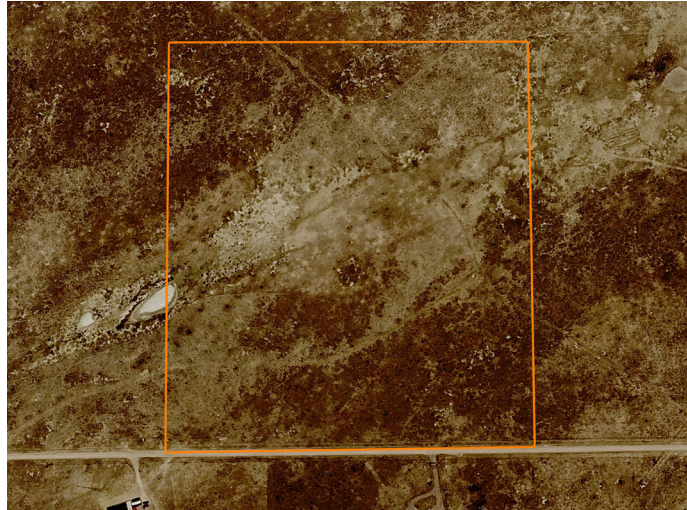


# LAND FOR SALE

## 36 +/- ACRE BUILD SITE WITH VIEWS AND ELECTRIC SERVICE



### PROPERTY FEATURES

- Electric service
- Rolling hills
- Grassland
- Views of Casper Mountain
- Multiple build sites
- Rural living
- Antelope
- Thousands of acres of BLM and state land nearby
- 12 miles north of Casper



For more information, contact:

**RIDGE BRIGGS,** Land Agent

**307.851.6937** | [RBriggs@MidwestLandGroup.com](mailto:RBriggs@MidwestLandGroup.com)

**MidwestLandGroup.com** BUYERS, SELLERS, AND LAND – CONNECTED

This property is being offered by Midwest Land Group, LLC, 7111 W. 151st Street, Ste. 27, Overland Park, KS 66223, 913.674.8010. Licensed in AL, AR, IA, IL, IN, KS, KY, LA, MN, MO, MS, MT, NE, OH, OK, SD, TN, TX, WI, and WY.



COUNTY: **NATRONA**

STATE: **WYOMING**

ACRES: **36**

