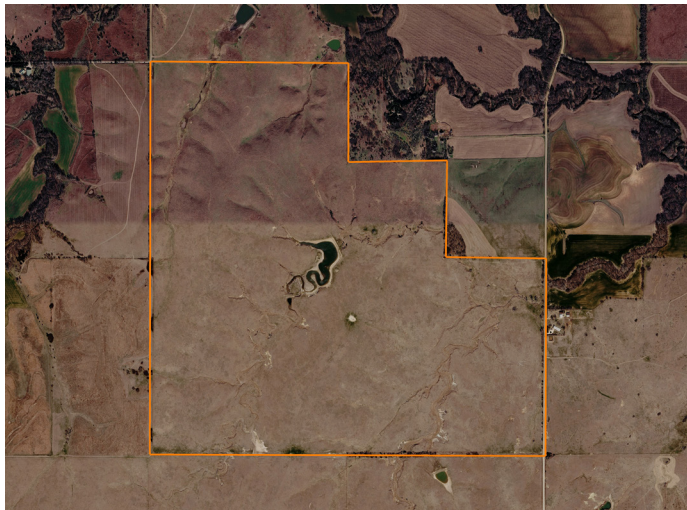


LAND FOR SALE

BIG SMOKY HILL GRASSLAND



PROPERTY FEATURES

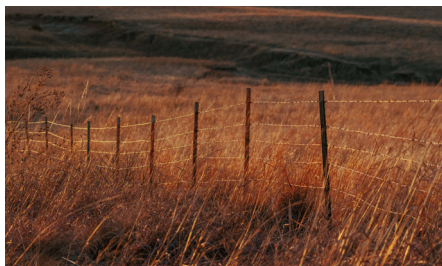
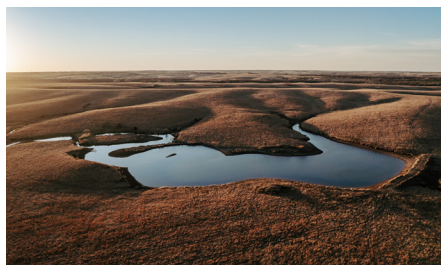
- 513.12 taxable acres
- 100% native grass
- Good fences & water well
- 5+ acre lake
- Multiple access points
- S34,T18,R5W
- \$1,765 taxes
- 26 miles to Lyons, KS
- 40 miles to Salina, KS
- 140 miles to Dodge City, KS



COUNTY: **MCPHERSON**

STATE: **KANSAS**

ACRES: **513**



For more information, contact:

TYLER HEIL, Land Agent

620.869.7083 | THeil@MidwestLandGroup.com

MidwestLandGroup.com

BUYERS, SELLERS, AND LAND – CONNECTED

This property is being offered by Midwest Land Group, LLC, 7111 W. 151st Street, Ste. 27, Overland Park, KS 66223, 913.674.8010.
Licensed in AL, AR, IA, IL, IN, KS, KY, LA, MN, MO, MS, MT, NE, OH, OK, SD, TN, TX, WI, and WY.

