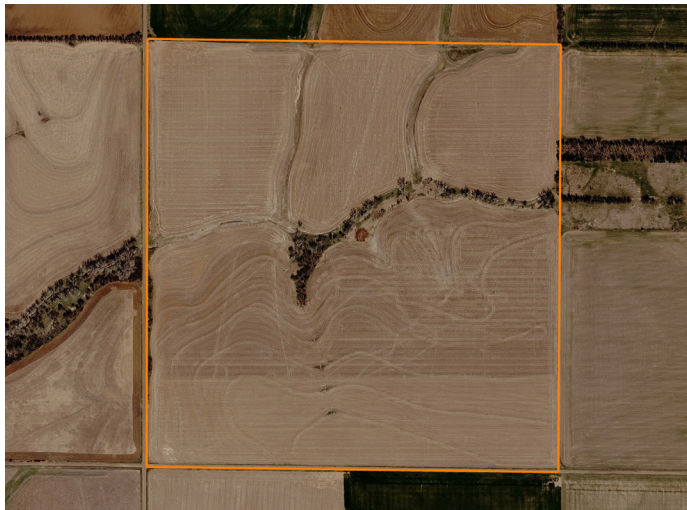


LAND FOR SALE

McPHERSON COUNTY DRYLAND TILLABLE – TRACT 4



PROPERTY FEATURES

- 151.22 FSA acres
- Class II & IV soils
- Crete & Longford Loam soils
- Great terraces/waterways
- Upland bird habitat
- Great travel corridor for deer
- Secluded cover
- Seasonal creek
- S6, T19, R5W
- \$1,335.66 taxes



For more information, contact:

TYLER HEIL, Land Agent

620.869.7083 | THeil@MidwestLandGroup.com

MidwestLandGroup.com BUYERS, SELLERS, AND LAND – CONNECTED

This property is being offered by Midwest Land Group, LLC, 7111 W. 151st Street, Ste. 27, Overland Park, KS 66223, 913.674.8010.
Licensed in AL, AR, IA, IL, IN, KS, KY, LA, MN, MO, MS, MT, NE, OH, OK, SD, TN, TX, WI, and WY.



COUNTY: **McPHERSON**

STATE: **KANSAS**

ACRES: **152**

