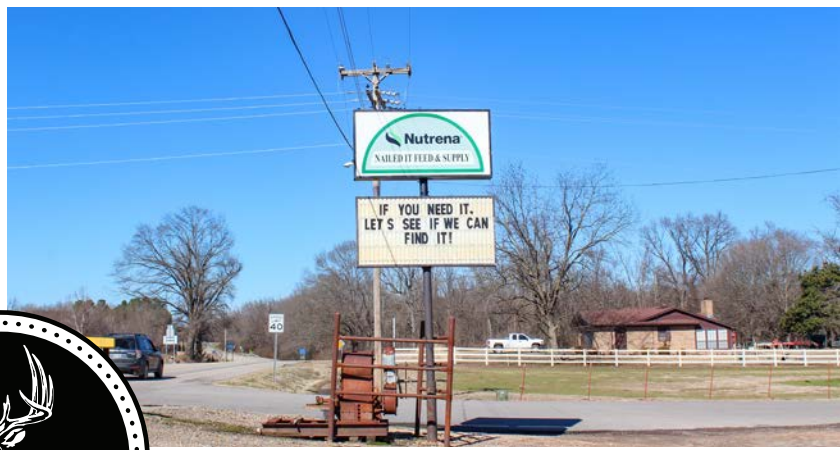


MIDWEST LAND GROUP PRESENTS

0.7 ACRES

LOGAN COUNTY, AR

501 MAIN STREET, SCRANTON, ARKANSAS 72863



MidwestLandGroup.com

MIDWEST LAND GROUP IS HONORED TO PRESENT

TURN-KEY HARDWARE AND FEED STORE IN LOGAN COUNTY

Midwest Land Group is proud to offer Nailed It Feed & Supply in Scranton, Arkansas. Nailed It provides the surrounding community with plumbing supplies, hardware, livestock feed, and medication, and anything farm-related. This business is a cornerstone for the community. Not only do they help our local farmers and homeowners, but they help support the local businesses and school with supplies in a pinch and not having to travel 30 minutes to big name hardware/farm stores. Nailed It has a large selection of anything from bolts and fasteners to specialty feeds for show animals, pet supplies, and everything in between

The business began as Davis & Sikes Feed Mill in 1949. Remodeled in 2019, becoming Nailed It Feed and Supply. The store consists of 1900 square feet of

up-to-date concrete flooring, walls, ceiling, electric, and plumbing fixtures. There is an office/break area and a restroom. Display shelving occupies the center portion of the store, with additional wall displays and shelves.

The L-shaped steel-topped counter supports the point of sale system along with plenty of workspace.

The warehouse is 40'x50' with a 12' apron on the west end, with an adjacent loading dock for convenient truck loading and unloading. Inside the warehouse, the walls are lined with a pallet rack system for organized storage. There is a 40' shipping container for additional dry storage beside the warehouse. Also, a Hyundai forklift conveys with purchase.



PROPERTY FEATURES

COUNTY: **LOGAN** | STATE: **ARKANSAS** | ACRES: **0.7**

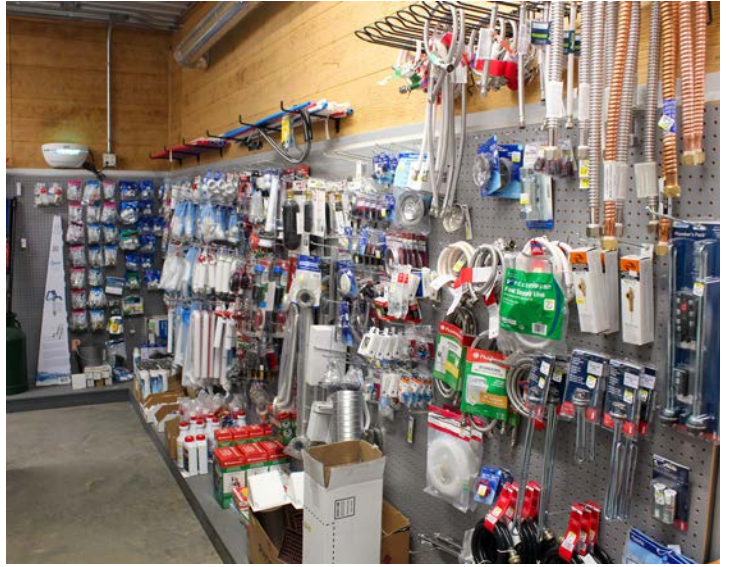
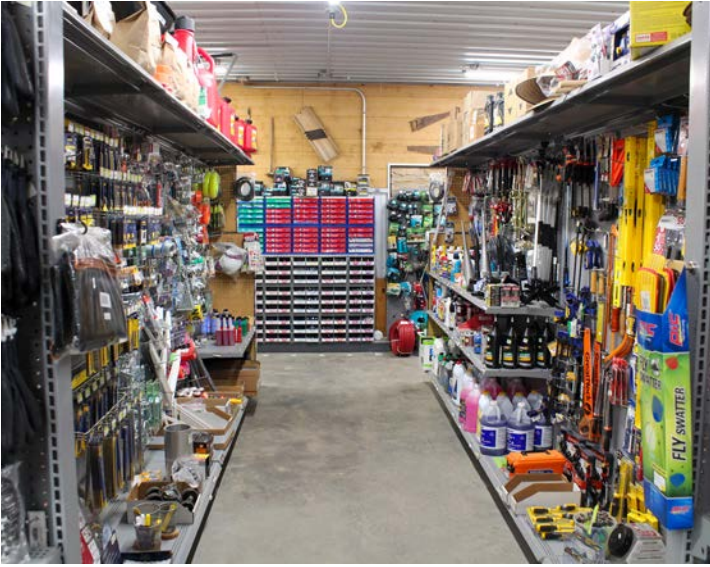
- Hardware/feed store
- Established business since 1949
- Remodeled in 2019
- Centrally located in Scranton
- Full inventory
- Turn-key business
- 15 minutes to Clarksville
- 20 minutes to Paris
- 40 minutes to Russellville
- 1 hour 5 minutes to Ft. Smith



ESTABLISHED BUSINESS SINCE 1949



FULL INVENTORY



AERIAL MAP



Maps Provided By:



© AgriData, Inc. 2025

www.AgriDataInc.com

Boundary Center: 35° 21' 42.43, -93° 32' 5.09

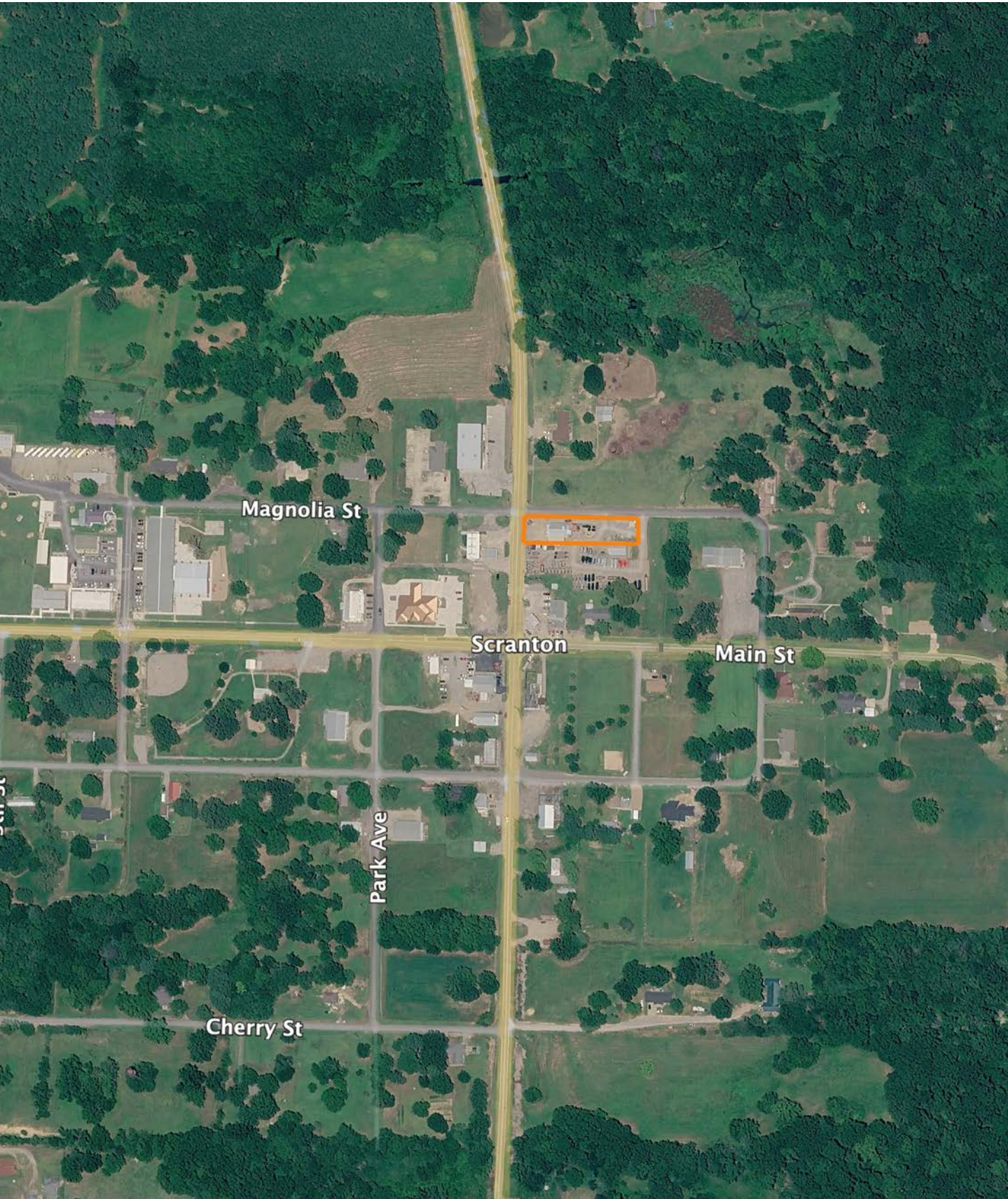
15-8N-24W
Logan County
Arkansas

0ft 102ft 203ft



2/12/2026

OVERVIEW MAP



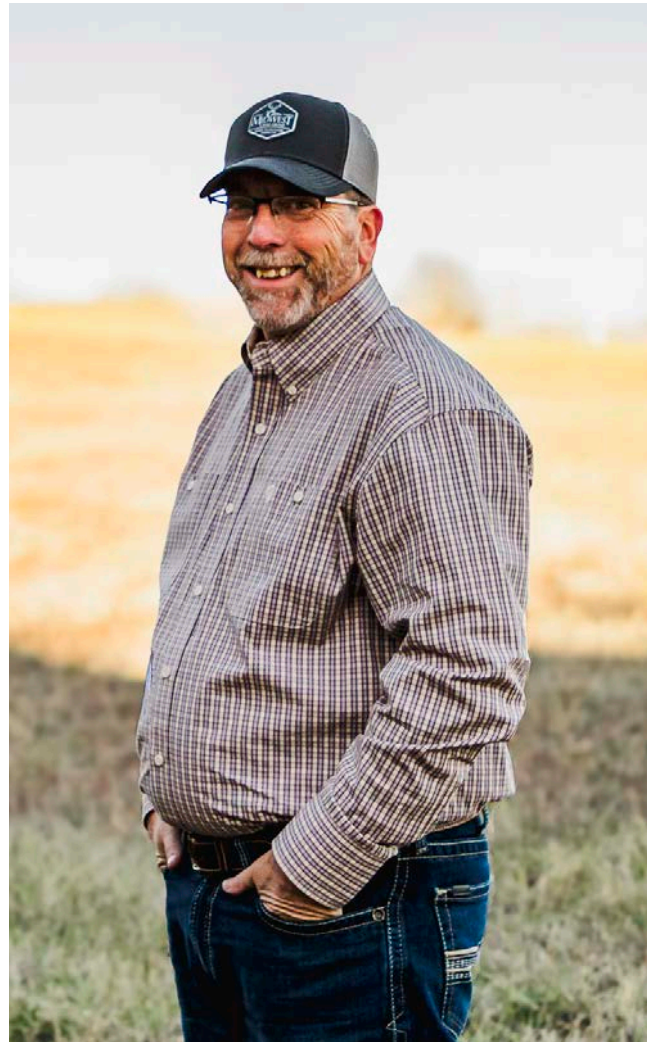
AGENT CONTACT

Born in Paris and raised in Scranton, Arkansas, Michael Joe Johnson has spent his entire life connected to the land, the people, and the rural way of life that defines West Central Arkansas. Growing up on a small farm and later discovering his passion for whitetail and turkey hunting in the early 2000s, Michael Joe developed an appreciation for land not only for its value, but for the memories, opportunities, and legacy it provides.

Michael Joe's journey into land sales began from the other side of the table - when he purchased his own farm through Midwest Land Group in 2020. The professionalism, communication, and continued follow-up he received made a lasting impression, inspiring him to help others experience that same level of service. As a former business owner who operated Johnson Industrial Coatings across five states for more than a decade, he understands client expectations, large-scale projects, and the importance of clear and dependable communication.

Whether advising on setting up bare farms for hunting or guiding first-time land buyers through a major investment, Michael Joe brings empathy and firsthand experience to every conversation. A former school board member for four years, a devout Christian, and member of American Legion Post 258, he is proud to serve the region he calls home with honesty, work ethic, and the ability to find common ground with just about anyone.

When you're ready to buy or sell rural property in West Central Arkansas, Michael Joe Johnson is ready to help every step of the way.



MICHAEL JOE JOHNSON, LAND AGENT
479.449.2227
MJohnson@MidwestLandGroup.com



MidwestLandGroup.com

This property is being offered by Midwest Land Group, LLC. 913.674.8010. All information provided by Midwest Land Group, LLC or their agents was acquired from sources deemed accurate and reliable, however we do not warrant its accuracy or completeness. Midwest Land Group, LLC assumes no liability for error, omission or investment results. Midwest Land Group, LLC. Licensed in Alabama, Arkansas, Illinois, Indiana, Iowa, Kansas, Kentucky, Louisiana, Minnesota, Mississippi, Missouri, Montana, Nebraska, Ohio, Oklahoma, South Dakota, Tennessee, Texas, Wisconsin, and Wyoming.