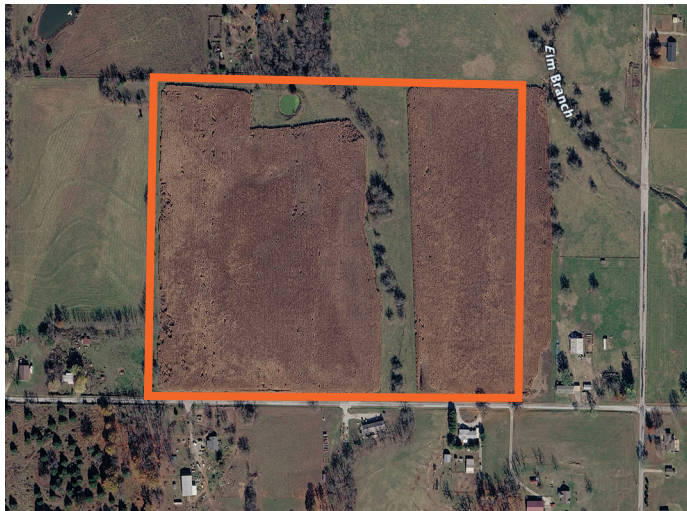


LAND FOR SALE

45.5 +/- ACRE LAWRENCE COUNTY BUILD SITE



PROPERTY FEATURES

- Multiple build sites
- Pond
- Wet weather creek
- Partially fenced
- Gated entrances
- Black top road frontage
- Electric at the road
- Offered in two tracts or whole
- Survey to determine actual acres
- 6 minutes to Aurora



COUNTY: **LAWRENCE**

STATE: **MISSOURI**

ACRES: **45.5**

For more information, contact:

KELLEN BOUNOUS, Land Agent

417.313.3123 | KBounous@MidwestLandGroup.com

MidwestLandGroup.com BUYERS, SELLERS, AND LAND – CONNECTED

This property is being offered by Midwest Land Group, LLC, 7111 W. 151st Street, Ste. 27, Overland Park, KS 66223, 913.674.8010.
Licensed in AL, AR, IA, IL, IN, KS, KY, LA, MN, MO, MS, MT, NE, OH, OK, SD, TN, TX, WI, and WY.

