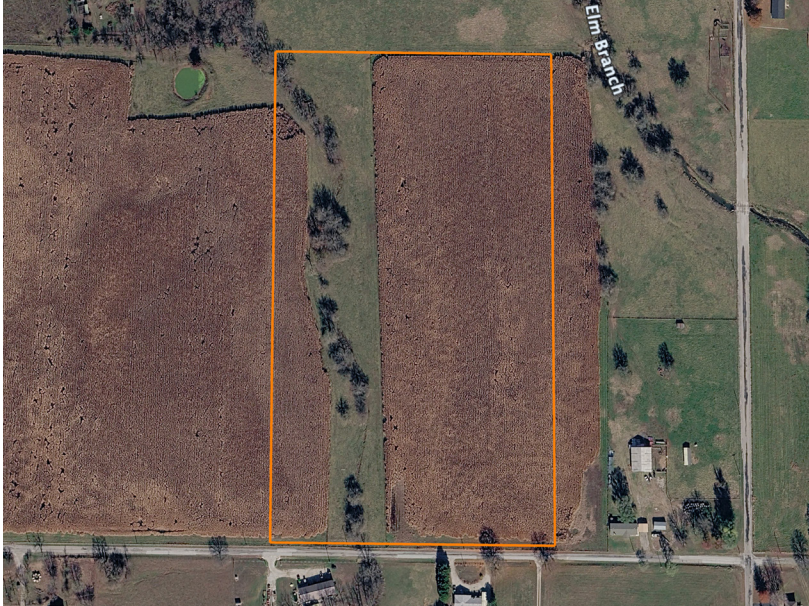


LAND FOR SALE

TRACT 2: BEAUTIFUL 22.8 +/- ACRES READY FOR YOUR DREAM HOME

COUNTY: **LAWRENCE**
STATE: **MISSOURI**
ACRES: **22.8**



PROPERTY FEATURES

- 22.8 +/- acres
- Multiple build sites
- Wet weather creek
- Partially fenced
- Gated entrance
- Black top road frontage
- Electric at the road
- Survey to determine actual acres
- 6 minutes to Aurora
- 6 minutes to Marionville
- 17 minutes to Mount Vernon



For more information, contact:

KELLEN BOUNOUS, Land Agent

417.313.3123 | KBounous@MidwestLandGroup.com

MidwestLandGroup.com



This property is being offered by Midwest Land Group, LLC, 7111 W. 151st Street, Ste. 27, Overland Park, KS 66223, 913.674.8010.
Licensed in AL, AR, IA, IL, IN, KS, KY, LA, MN, MO, MS, MT, NE, OH, OK, SD, TN, TX, WI, and WY.