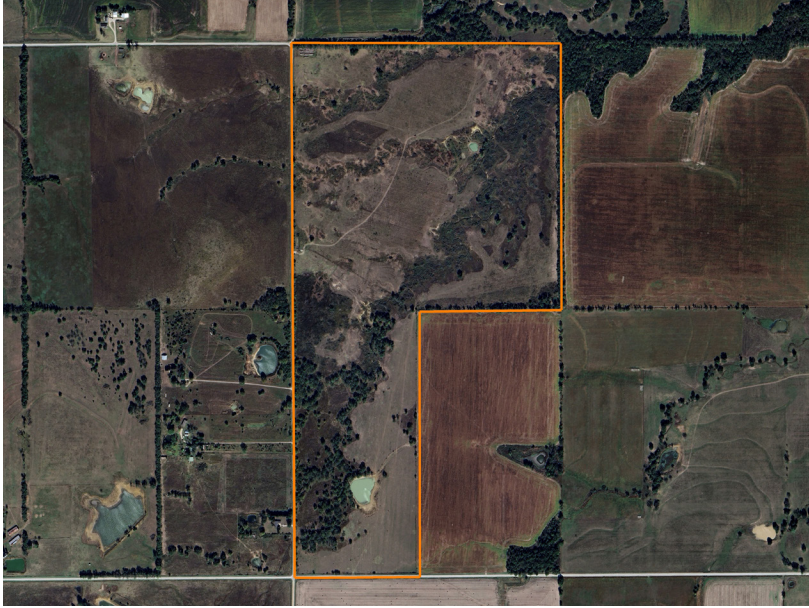


LAND FOR SALE

NATIVE AND IMPROVED PRODUCTIVE GRASSLAND IN LABETTE COUNTY, KANSAS

COUNTY: **LABETTE**
STATE: **KANSAS**
ACRES: **228**



PROPERTY FEATURES

- Located just east of Edna, KS
- Mix of native grass, improved fescue, and Bermuda
- Year-round water: 2 ponds and a creek
- Cross-fenced for rotational grazing
- New corrals with a working alley and a load-out
- Access from the south and west roads
- Brush and timber were cleared through the NRCS EQUIP program
- Significant new perimeter fencing (balance average)
- Currently carrying 45 pairs and 4 bulls with room for more
- Possession at closing

For more information, contact:

ZED GOODWIN, Land Agent

620.870.1982 | ZedGoodwin@MidwestLandGroup.com

MidwestLandGroup.com



This property is being offered by Midwest Land Group, LLC, 7111 W. 151st Street, Ste. 27, Overland Park, KS 66223, 913.674.8010. Licensed in AL, AR, IA, IL, IN, KS, KY, LA, MN, MO, MS, MT, NE, OH, OK, SD, TN, TX, WI, and WY.