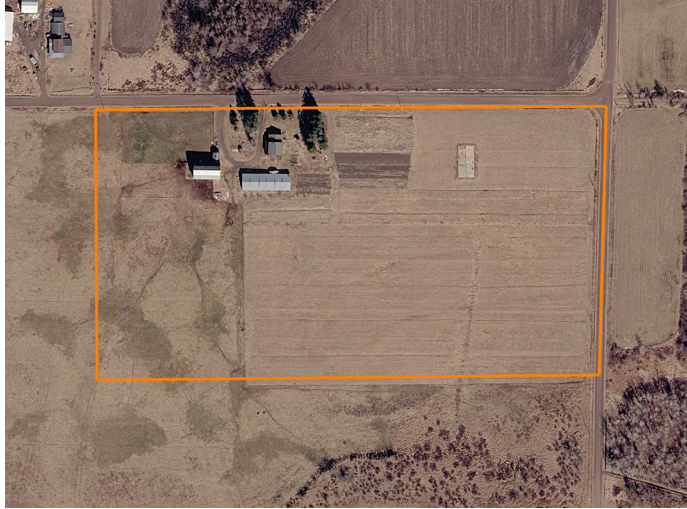


# LAND FOR SALE

## 20 ACRES WITH HOME AND BARN



### PROPERTY FEATURES

- Private, peaceful setting
- Gorgeous farm country views
- Very affordable tract in Chippewa County
- Electricity at road
- Off-grid home needing TLC
- 2 large barns
- Pasture or tillable ground
- Low taxes
- No government programs
- Ability to combine with an additional 10 or 30 acres



COUNTY: **CHIPPEWA**

STATE: **WISCONSIN**

ACRES: **20**



For more information, contact:

**MATT SPETS**, Land Agent

715.393.8387 | [MSpets@MidwestLandGroup.com](mailto:MSpets@MidwestLandGroup.com)

**MidwestLandGroup.com** BUYERS, SELLERS, AND LAND – CONNECTED