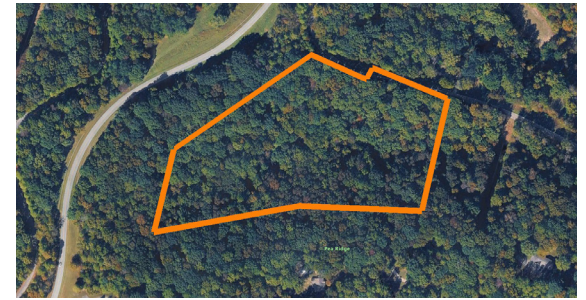


LAND FOR SALE

RARE 15.39 +/- ACRE BUILD SITE IN WILLIAMSON COUNTY, TENNESSEE

COUNTY: **WILLIAMSON**
STATE: **TENNESSEE**
ACRES: **15.39**



PROPERTY FEATURES

- 15.39 +/- acres
- 320 +/- feet of blacktop road frontage
- Utilities available
- Three large Perc sites
- Bordered by Natchez Trace Parkway
- Mature hardwood timber
- Prime location
- Spring fed creek
- Private
- Williamson County



For more information, contact:

JUSTIN CARROLL, Land Agent

931.488.4393 | JCarroll@MidwestLandGroup.com

MidwestLandGroup.com



This property is being offered by Midwest Land Group, LLC, 7111 W. 151st Street, Ste. 27, Overland Park, KS 66223, 913.674.8010. Licensed in AL, AR, IA, IL, IN, KS, KY, LA, MN, MO, MS, MT, NE, OH, OK, SD, TN, TX, WI, and WY.