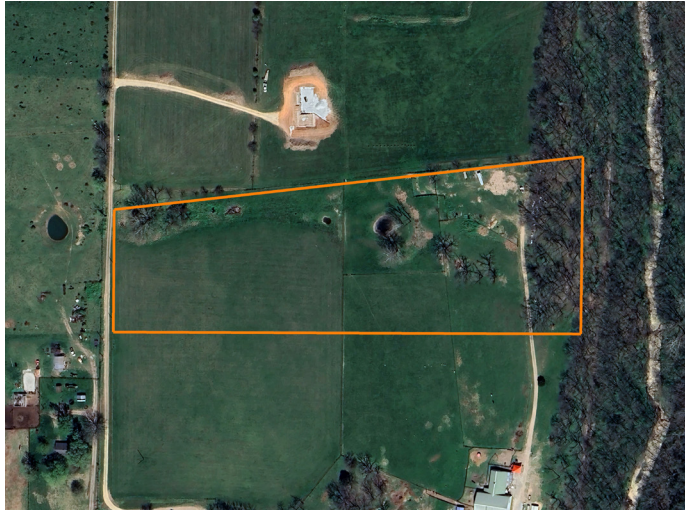


# LAND FOR SALE

## 12 +/- ACRES - BUILD SITE READY



### PROPERTY FEATURES

- 12 +/- acres of buildable land
- North Stone County
- Electric available at the road
- Ideal build location
- Great balance of privacy and accessibility
- Plenty of room for a hobby farm



COUNTY: **STONE**

STATE: **MISSOURI**

ACRES: **12**



For more information, contact:

**BJORN WILKERSON**, Land Agent

**417.233.1243** | [BWilkerson@MidwestLandGroup.com](mailto:BWilkerson@MidwestLandGroup.com)

**MidwestLandGroup.com** BUYERS, SELLERS, AND LAND – CONNECTED

This property is being offered by Midwest Land Group, LLC, 7111 W. 151st Street, Ste. 27, Overland Park, KS 66223, 913.674.8010.  
Licensed in AL, AR, IA, IL, IN, KS, KY, LA, MN, MO, MS, MT, NE, OH, OK, SD, TN, TX, WI, and WY.

