

MIDWEST LAND GROUP PRESENTS

100 ACRES IN

---

# STONE COUNTY ARKANSAS



32876 HIGHWAY 14, MARCELLA, AR 72555



MIDWEST LAND GROUP IS HONORED TO PRESENT

# 100 +/- ACRE EXCEPTIONAL WHITE RIVER PROPERTY

---

This one-of-a-kind 100 +/- acre tract in Stone County, Arkansas, offers a rare combination of live-water frontage, build-ready improvements, and unmatched natural character. Featuring over 800 feet of frontage on the iconic White River, plus additional frontage along Wallace Creek, this property is truly a river lover's dream.

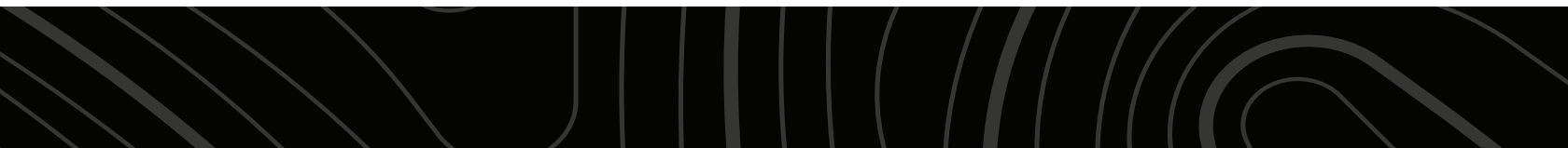
At the heart of the property sits a 1,500± square foot barndominium, with approximately 600 square foot of finished living space, ideal for a weekend retreat, hunting lodge, or full-time residence. The structure is already equipped with underground electric and rural water, making it immediately usable while still allowing room for expansion or a future custom home.

The land itself is nothing short of remarkable. Multiple natural springs, towering bluffs, old rock walls, and a

well-established trail system create a landscape rich in Ozark history and beauty. A standout feature is the ability to drive a truck or UTV all the way down to the river, offering easy access for fishing, kayaking, swimming, or simply enjoying the water's edge.

This property balances privacy and accessibility, located just 25 minutes from Mountain View and approximately 30 minutes from Batesville, providing convenient access to dining, shopping, medical services, and the famous Ozark music scene.

Whether you're searching for a legacy recreational property, a riverfront homestead, or an investment-grade tract with live water and infrastructure, this Stone County gem delivers character, usability, and location that are increasingly hard to find.



# PROPERTY FEATURES

COUNTY: **STONE** | STATE: **ARKANSAS** | ACRES: **100**

---

- 100 +/- acres
- 1,500 sq. ft. barndominium
- 600 +/- sq. ft. living space in barndominium
- Over 800 feet of White River frontage
- Drive to river's edge
- Fish, swim, and hunting dream property
- Underground electric from highway to barndominium
- Rural water to barndominium
- Amazing build sites on bluff to river
- 30 minutes to Batesville, AR
- 25 minutes to Mountain View
- Natural springs on property
- Trail system





# 1,500 SQ. FT. BARNDOMINIUM

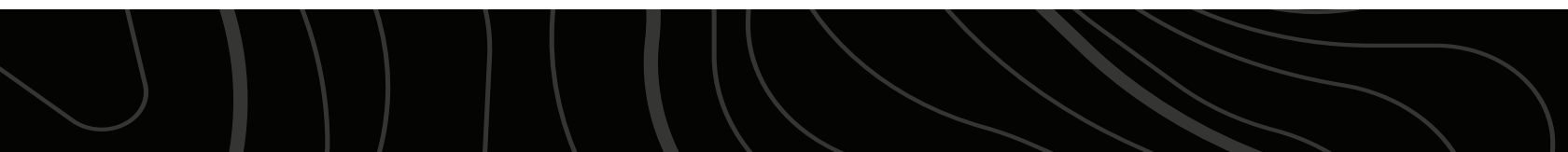
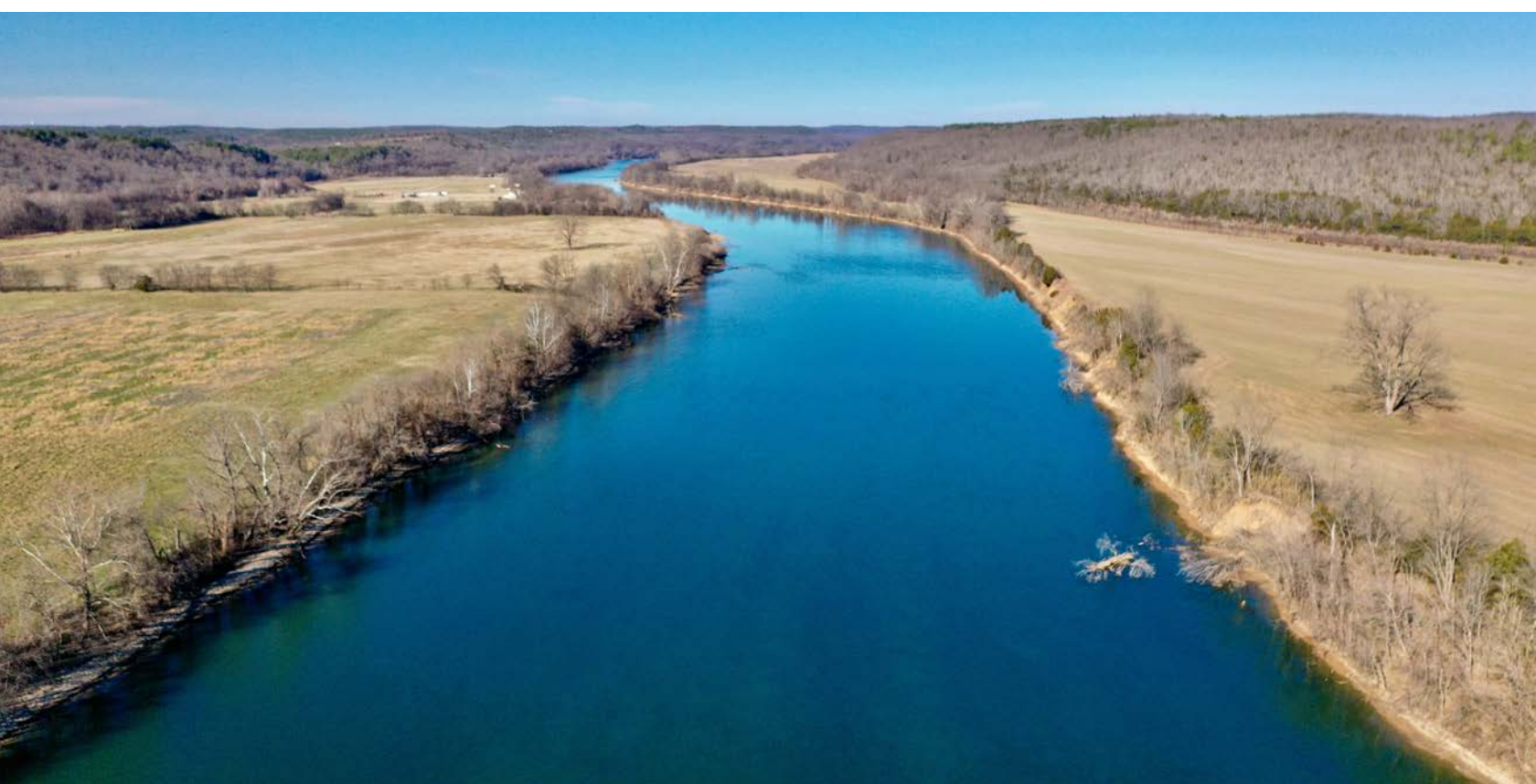
At the heart of the property sits a 1,500 +/- square foot barndominium, with approximately 600 square foot of finished living space, ideal for a weekend retreat, hunting lodge, or full-time residence.





# OVER 800 FEET OF WHITE RIVER FRONTAGE

---





# WALLACE CREEK FRONTAGE

---



## TRAIL SYSTEM

---





# VIEWS WITH ELECTRIC AND RURAL WATER

---





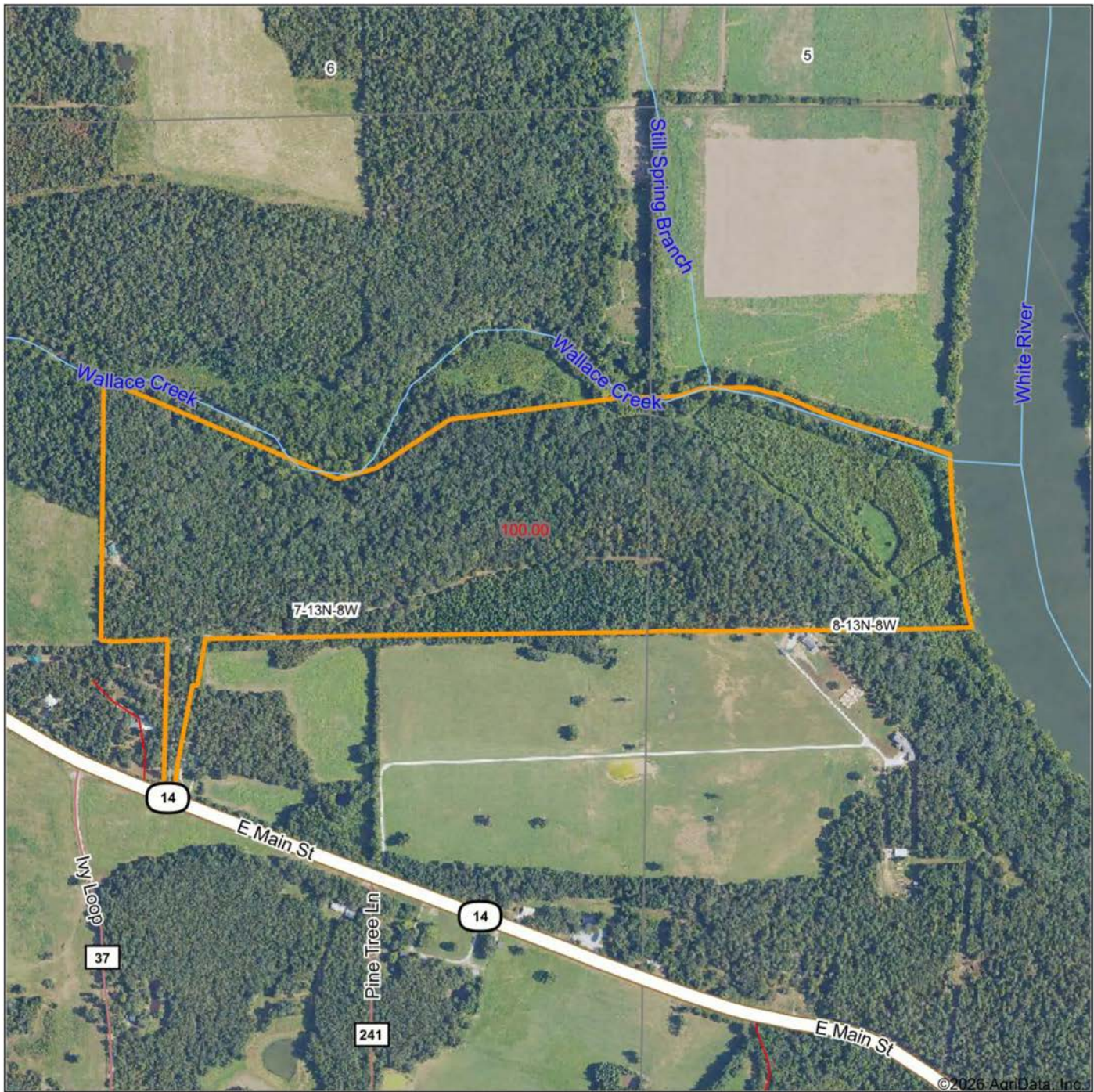
# ADDITIONAL PHOTOS

---





# AERIAL MAP



Maps Provided By:



© AgriData, Inc. 2025

www.AgriDataInc.com

Boundary Center: 35° 46' 15.9, -91° 52' 23.37

**7-13N-8W**  
**Stone County**  
**Arkansas**

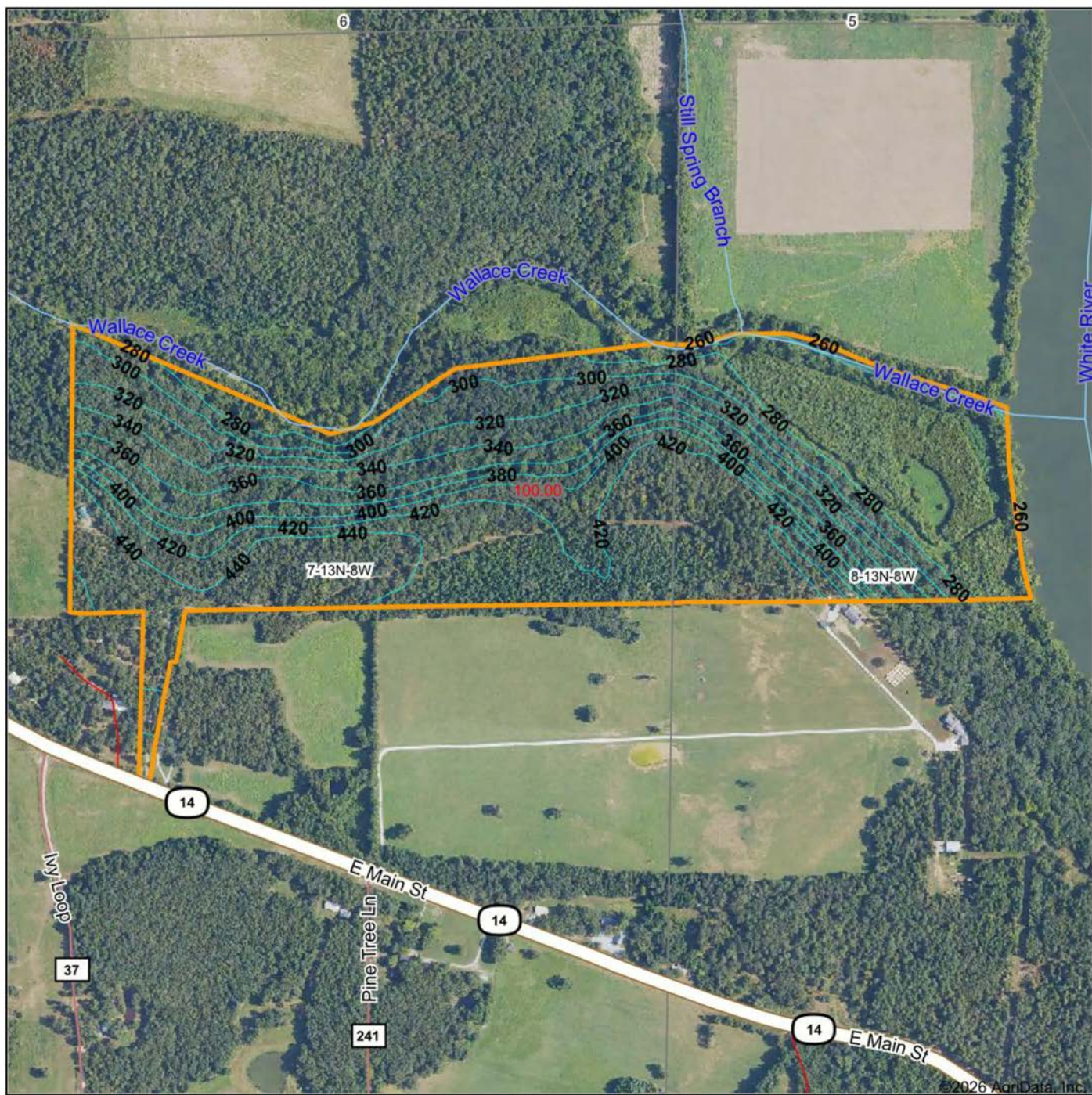
0ft 752ft 1503ft



1/16/2026



# TOPOGRAPHY MAP



Maps Provided By:



© AgriData, Inc. 2025 www.AgriDataInc.com

Source: USGS 10 meter dem

Interval(ft): 20.0

Min: 258.2

Max: 455.3

Range: 197.1

Average: 361.1

Standard Deviation: 65.65 ft

0ft 681ft 1363ft



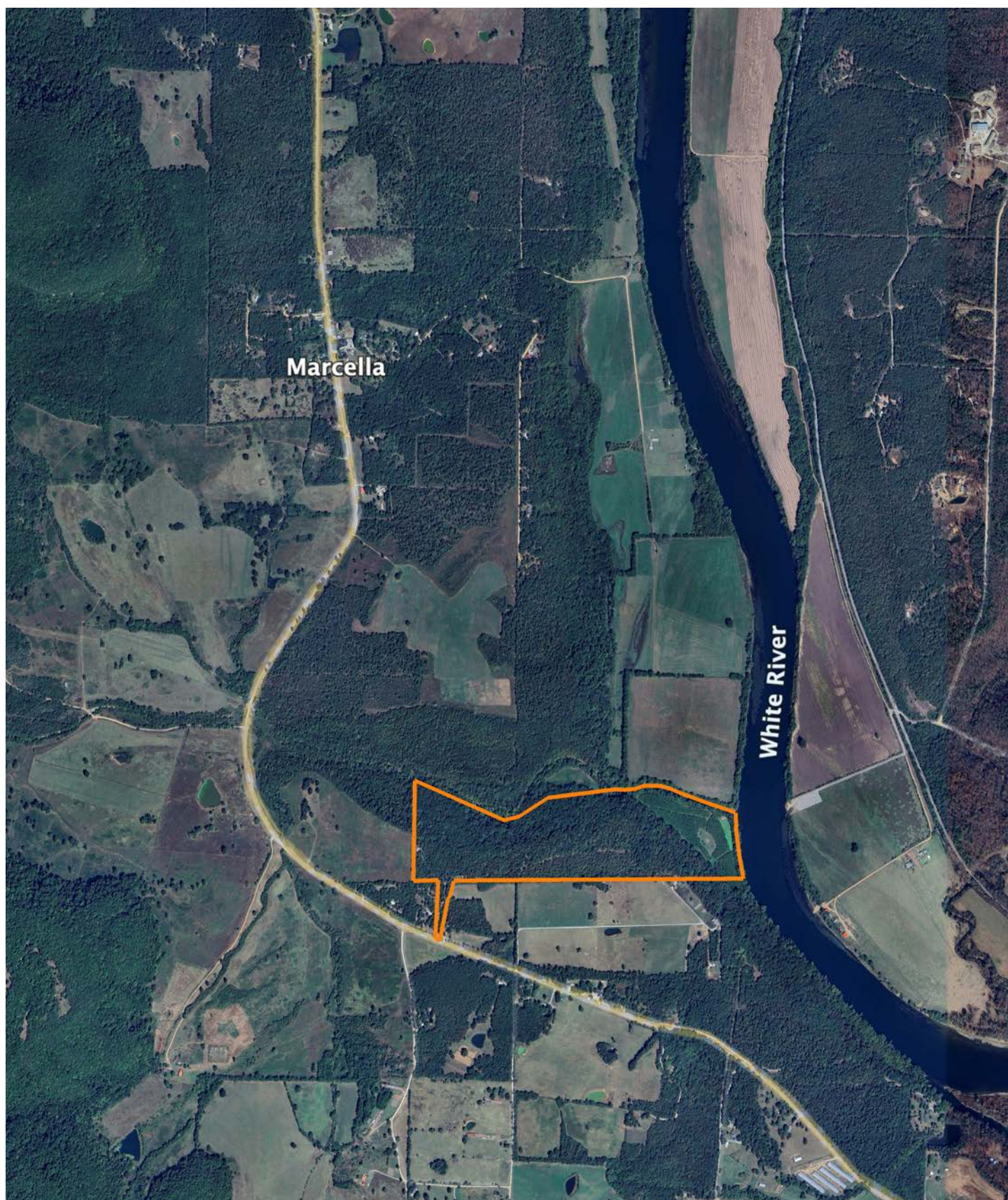
1/16/2026

7-13N-8W  
Stone County  
Arkansas

Boundary Center: 35° 46' 15.9, -91° 52' 23.37



# OVERVIEW MAP





# AGENT CONTACT

There's no doubt Ray Scheide has a passion for the outdoors. At Midwest Land Group, he's able to wake up every morning excited about his job, working for a company he's proud to represent. Ray brings great knowledge of the outdoors to every interaction, offering the best service he knows how to each and every client. From listing to closing, it's his mission to bring people together as they make a big life decision. Ray was born in Washington, D.C., and graduated from the University of Arkansas—Fort Smith. A two-time FLW Tour Champion, Ray spent 11 years as a professional fisherman, and served as only one of 12 representatives from the U.S. in the Eurocup in Spain. During his tenure as a professional angler, he marketed himself to large corporate brands and served as an ambassador in the fishing industry. With great desire to share his passion with kids, Ray developed the first high school fishing team in Arkansas that was the largest in the state for five years, and averaged 125 youths for whom he'd help host a tournament circuit for and take them all over the United States to compete in national events. When he's not out fishing, you can probably find him hunting or traveling. Ray lives in Dover, Arkansas, with his wife, Michelle, son, Corey, and daughter, Mikayla. Call Ray today to experience the Midwest Land Group difference!



**RAY SCHEIDE,** LAND AGENT  
**479.886.5312**  
RScheide@MidwestLandGroup.com



## MidwestLandGroup.com

This property is being offered by Midwest Land Group, LLC. 913.674.8010. All information provided by Midwest Land Group, LLC or their agents was acquired from sources deemed accurate and reliable, however we do not warrant its accuracy or completeness. Midwest Land Group, LLC assumes no liability for error, omission or investment results. Midwest Land Group, LLC. Licensed in Arkansas, Illinois, Iowa, Kansas, Minnesota, Missouri, Nebraska, Oklahoma, South Dakota, Tennessee, Texas, Wisconsin, and Wyoming.