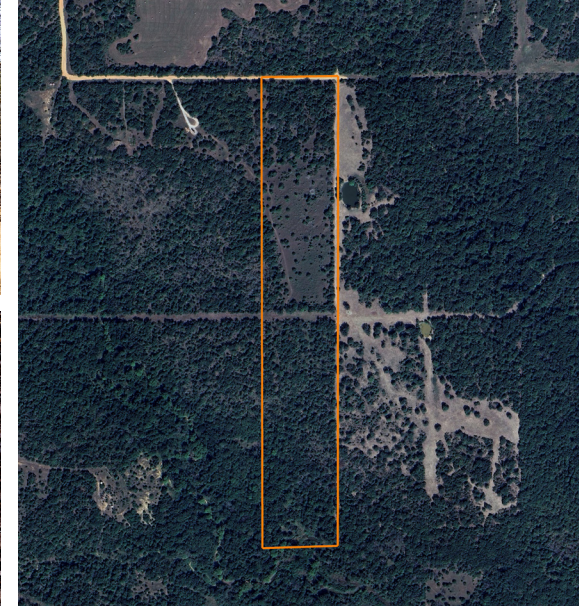


LAND FOR SALE

SEMINOLE COUNTY DEER HUNTER'S DREAM - 32 +/- ACRES OF PRIME HABITAT

COUNTY: **SEMINOLE**
STATE: **OKLAHOMA**
ACRES: **32**



PROPERTY FEATURES

- Located on a quiet dead-end road just outside Cromwell
- Excellent mix of open pasture and mature timber
- Loaded with deer sign and natural wildlife trails
- Ideal set up for both bow and rifle hunting
- Multiple potential build sites with scenic views
- Partially fenced for livestock or land management
- Room for food plots, stands, and recreational use
- Private and secluded with low-traffic access

For more information, contact:

CADEN WITTY, Land Agent

918.552.9093 | CWitty@MidwestLandGroup.com

MidwestLandGroup.com



This property is being offered by Midwest Land Group, LLC, 7111 W. 151st Street, Ste. 27, Overland Park, KS 66223, 913.674.8010. Licensed in AL, AR, IA, IL, IN, KS, KY, LA, MN, MO, MS, MT, NE, OH, OK, SD, TN, TX, WI, and WY.