

LAND FOR SALE

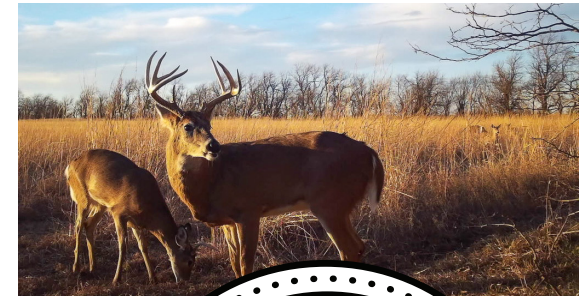
VERSATILE RICE COUNTY CRP

COUNTY: **RICE**
STATE: **KANSAS**
ACRES: **80**



PROPERTY FEATURES

- 80.3 taxable acres
- 79.8 CRP acres
- S2,T19,R6 W2 SE4
- \$3,631 annual CRP income
- \$1,153 2025 taxes
- 2026-2036 CRP contract
- Deer Unit 6
- Class II & III soils
- 5 miles to Little River, KS
- 17 miles to Lyons, KS
- 20 miles to McPherson, KS
- 28 miles to Hutchinson, KS



For more information, contact:

TYLER HEIL, Land Agent

620.869.7083 | THeil@MidwestLandGroup.com

MidwestLandGroup.com



This property is being offered by Midwest Land Group, LLC, 7111 W. 151st Street, Ste. 27, Overland Park, KS 66223, 913.674.8010.
Licensed in AL, AR, IA, IL, IN, KS, KY, LA, MN, MO, MS, MT, NE, OH, OK, SD, TN, TX, WI, and WY.