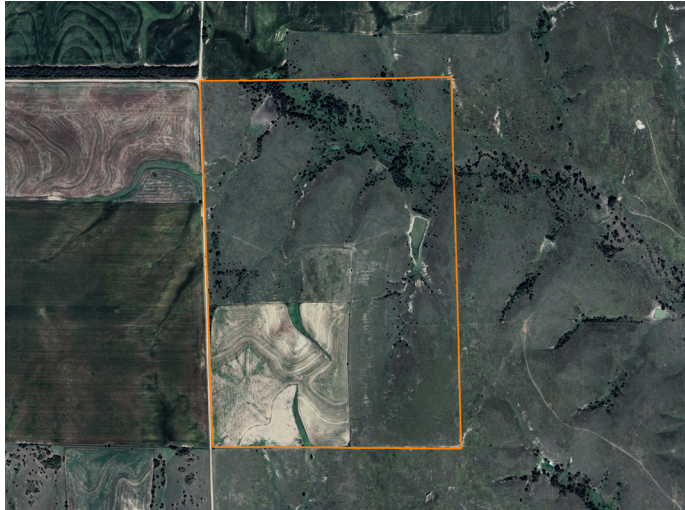


# LAND FOR SALE

## DO-IT-ALL PROPERTY IN OSBORNE COUNTY



### PROPERTY FEATURES

- 3 miles from Covert, Kansas
- 52 +/- acres of cropland
- Fully fenced
- Four ponds
- Good whitetail deer hunting
- Waterfowl hunting
- Quail hunting



COUNTY: **OSBORNE**

STATE: **KANSAS**

ACRES: **247**



For more information, contact:

**COLE SCHUMACHER**, Land Agent

**785.624.2191** | [CSchumacher@MidwestLandGroup.com](mailto:CSchumacher@MidwestLandGroup.com)

**MidwestLandGroup.com** BUYERS, SELLERS, AND LAND – CONNECTED

This property is being offered by Midwest Land Group, LLC, 7111 W. 151st Street, Ste. 27, Overland Park, KS 66223, 913.674.8010.  
Licensed in AL, AR, IA, IL, IN, KS, KY, LA, MN, MO, MS, MT, NE, OH, OK, SD, TN, TX, WI, and WY.

