

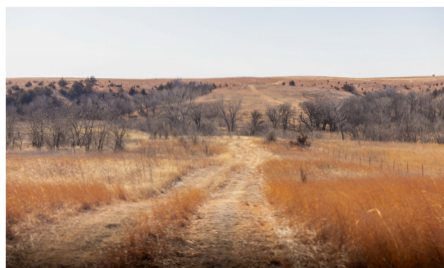
LAND FOR SALE

IMPRESSIVE HUNTING PROPERTY IN OSBORNE COUNTY



PROPERTY FEATURES

- 60 +/- acres of secluded cropland
- Live spring
- New solar well
- Multiple ponds
- Thick native cover
- New fencing and gated entry
- A-plus hunting farm
- Rio Grande turkeys
- Upland birds



COUNTY: **OSBORNE**

STATE: **KANSAS**

ACRES: **240**

For more information, contact:

COLE SCHUMACHER, Land Agent

785.624.2191 | CSchumacher@MidwestLandGroup.com

MidwestLandGroup.com BUYERS, SELLERS, AND LAND – CONNECTED

This property is being offered by Midwest Land Group, LLC, 7111 W. 151st Street, Ste. 27, Overland Park, KS 66223, 913.674.8010.
Licensed in AL, AR, IA, IL, IN, KS, KY, LA, MN, MO, MS, MT, NE, OH, OK, SD, TN, TX, WI, and WY.

