

MIDWEST LAND GROUP PRESENTS

16.5 ACRES IN

---

# NEWTON COUNTY ARKANSAS



[MidwestLandGroup.com](http://MidwestLandGroup.com)



MIDWEST LAND GROUP IS HONORED TO PRESENT

# 16.5 +/- ACRES IN NORTHERN NEWTON COUNTY

---

Three-quarters of a mile off Possum Trot Road lies 16.5+/- acres of pristine wilderness. 10 +/- acres and 5 +/- acres connected by 1 ½ +/- acres deeded access along the county road frontage. Large oaks and hickory cover the gentle slope to a wet-weather creek below. Multiple flat benches would allow build sites. Turkey, deer, and bear are plentiful in the area.

Whether you are looking for a build site for a weekend getaway or multiple Airbnbs, this is the place for you. 36 miles south of Harrison, Arkansas. 6 miles to Ponca, Arkansas. Spend the day hiking to nearby Hawksbill Crag or the Lost Valley Trail, floating the Buffalo River, or listening to the Elk bugle on a cool October morning. Drive 3 miles to Compton and rent a side by side for the day and explore the Ozark Mountains.





# PROPERTY FEATURES

PRICE: **\$100,650** | COUNTY: **NEWTON** | STATE: **ARKANSAS**

---

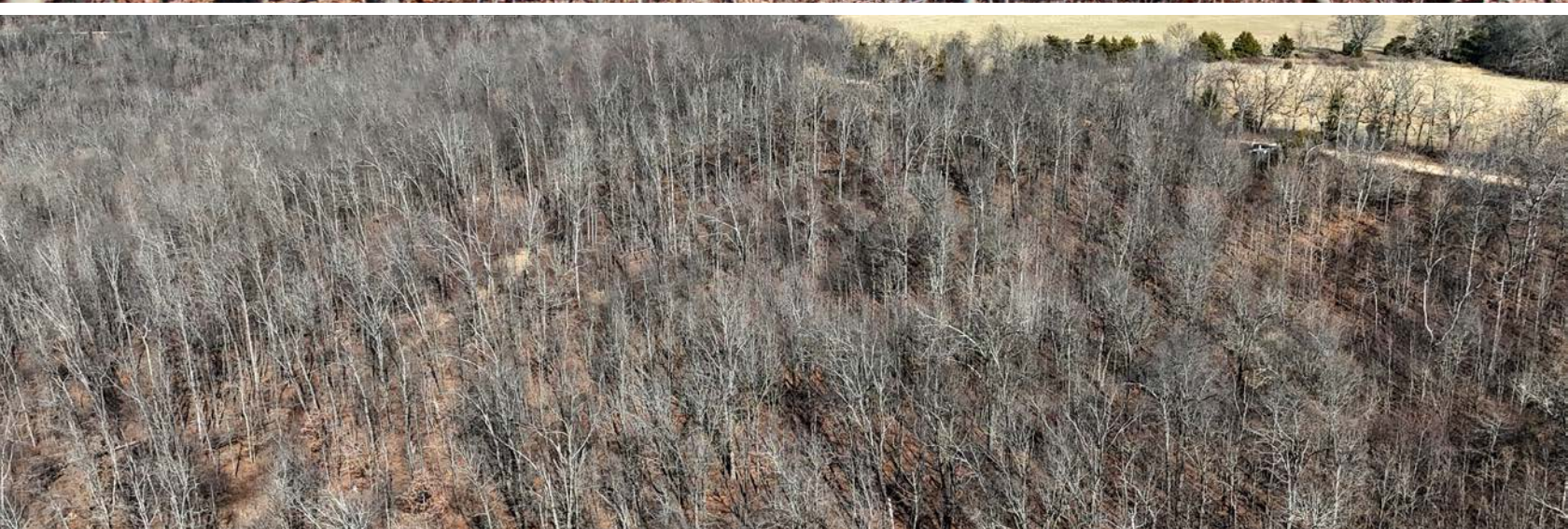
- Quiet county road frontage
- Abundant wildlife
- Mature timber
- Deer, turkey, and bear Hunting
- Buffalo National River WMA
- Nearby Center Point trailhead
- Buffalo River trailhead
- 6 miles to Ponca
- 3 miles to Compton
- 36 miles to Harrison





16.5 +/- ACRES

---





# QUIET COUNTY ROAD FRONTAGE

---



## MATURE TIMBER

---





# GREAT RECREATIONAL LOCATION

---

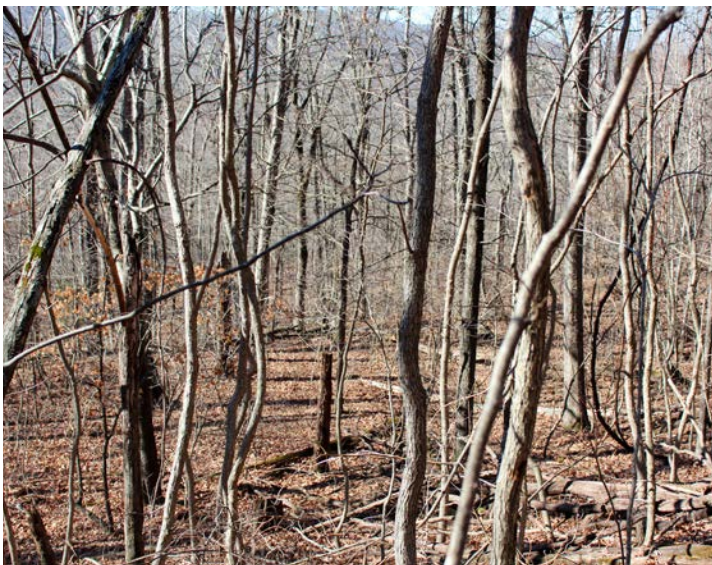
36 miles south of Harrison, Arkansas. 6 miles to Ponca, Arkansas. Spend the day hiking to nearby Hawksbill Crag or the Lost Valley Trail, floating the Buffalo River, or listening to the Elk bugle on a cool October morning.





## ADDITIONAL PHOTOS

---





# AERIAL MAP



©2026 AgriData, Inc.



Maps Provided By:



© AgriData, Inc. 2025 www.AgriDataInc.com

Boundary Center: 36° 5' 39.71, -93° 21' 8.71

**29-17N-22W**  
**Newton County**  
**Arkansas**

0ft 381ft 761ft



1/5/2026

Field borders provided by Farm Service Agency as of 5/21/2008.



# TOPOGRAPHY MAP



©2026 AgriData, Inc.



Maps Provided By:



© AgriData, Inc. 2025 www.AgriDataInc.com

Field borders provided by Farm Service Agency as of 5/21/2008.

Source: USGS 1 meter dem

Interval(ft): 20.0

Min: 1,926.2

Max: 2,242.9

Range: 316.7

Average: 2,093.7

Standard Deviation: 75.56 ft

0ft 261ft 522ft



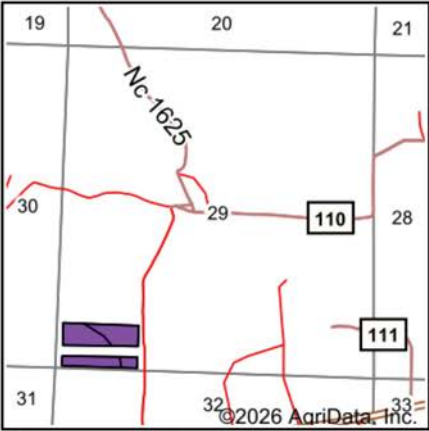
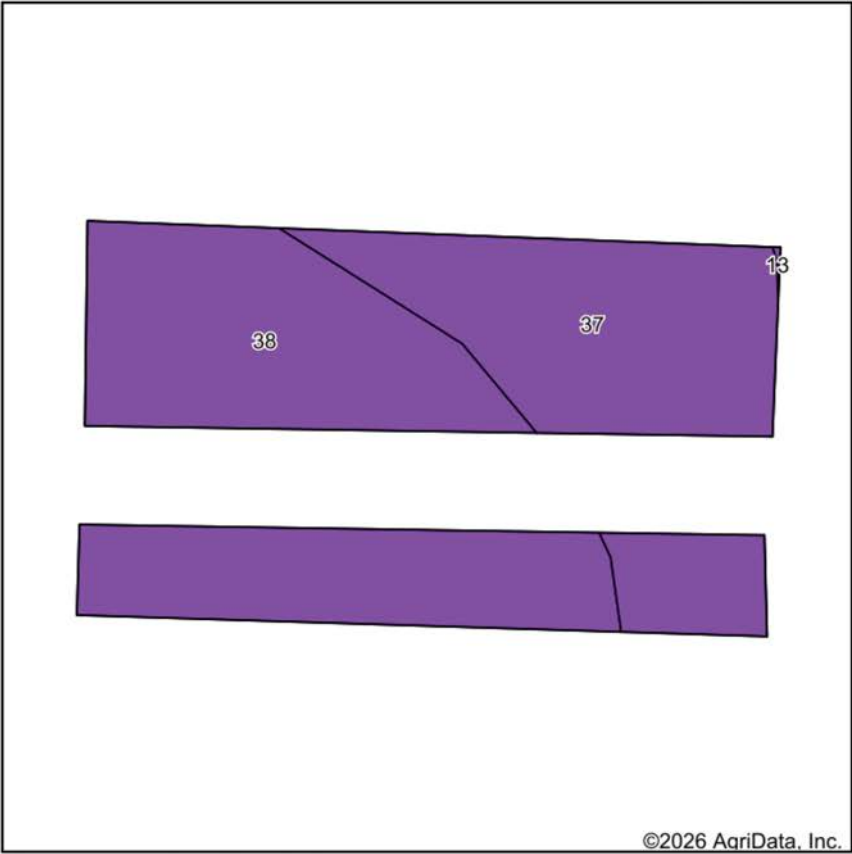
1/5/2026

29-17N-22W  
Newton County  
Arkansas

Boundary Center: 36° 5' 39.71, -93° 21' 8.71



# SOIL MAP



State: **Arkansas**  
County: **Newton**  
Location: **29-17N-22W**  
Township: **Plumlee**  
Acres: **14.92**  
Date: **1/5/2026**



Maps Provided By:



Soils data provided by USDA and NRCS.

Area Symbol: AR101, Soil Area Version: 23

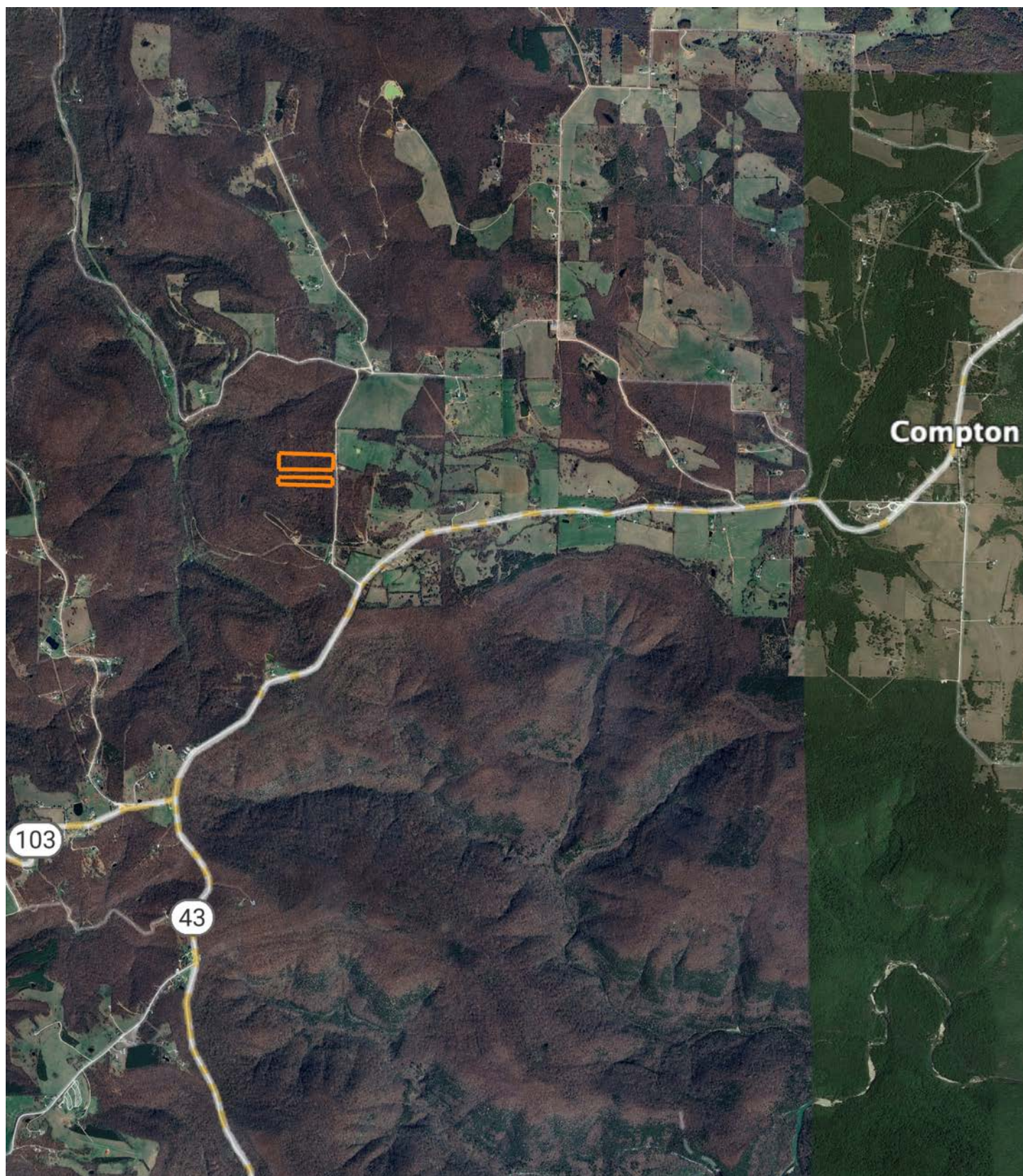
Code	Soil Description	Acres	Percent of field	Non-Irr Class Legend	Non-Irr Class *c	Common bermudagrass AUM	Improved bermudagrass AUM
38	Nella-Steprock-Mountainburg very stony loams, 20 to 40 percent slopes	8.84	59.2%		Vlls	5	6
37	Nella-Steprock complex, 8 to 20 percent slopes	6.08	40.8%		Vis	5.5	6.5
Weighted Average					6.59	5.2	6.2

\*c: Using Capabilities Class Dominant Condition Aggregation Method



# OVERVIEW MAP

---





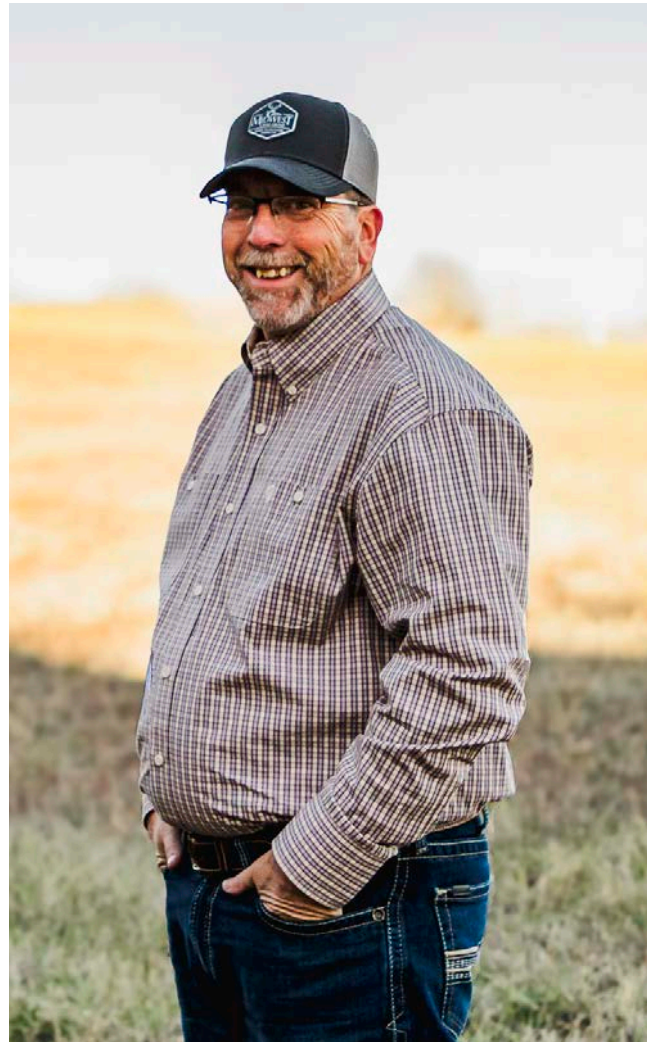
# AGENT CONTACT

Born in Paris and raised in Scranton, Arkansas, Michael Joe Johnson has spent his entire life connected to the land, the people, and the rural way of life that defines West Central Arkansas. Growing up on a small farm and later discovering his passion for whitetail and turkey hunting in the early 2000s, Michael Joe developed an appreciation for land not only for its value, but for the memories, opportunities, and legacy it provides.

Michael Joe's journey into land sales began from the other side of the table - when he purchased his own farm through Midwest Land Group in 2020. The professionalism, communication, and continued follow-up he received made a lasting impression, inspiring him to help others experience that same level of service. As a former business owner who operated Johnson Industrial Coatings across five states for more than a decade, he understands client expectations, large-scale projects, and the importance of clear and dependable communication.

Whether advising on setting up bare farms for hunting or guiding first-time land buyers through a major investment, Michael Joe brings empathy and firsthand experience to every conversation. A former school board member for four years, a devout Christian, and member of American Legion Post 258, he is proud to serve the region he calls home with honesty, work ethic, and the ability to find common ground with just about anyone.

When you're ready to buy or sell rural property in West Central Arkansas, Michael Joe Johnson is ready to help every step of the way.



**MICHAEL JOE JOHNSON**, LAND AGENT

**479.449.2227**

[MJohnson@MidwestLandGroup.com](mailto:MJohnson@MidwestLandGroup.com)



## MidwestLandGroup.com

This property is being offered by Midwest Land Group, LLC. 913.674.8010. All information provided by Midwest Land Group, LLC or their agents was acquired from sources deemed accurate and reliable, however we do not warrant its accuracy or completeness. Midwest Land Group, LLC assumes no liability for error, omission or investment results. Midwest Land Group, LLC. Licensed in Alabama, Arkansas, Illinois, Indiana, Iowa, Kansas, Kentucky, Louisiana, Minnesota, Mississippi, Missouri, Montana, Nebraska, Ohio, Oklahoma, South Dakota, Tennessee, Texas, Wisconsin, and Wyoming.