

MIDWEST LAND GROUP PRESENTS

15.2 ACRES IN

---

# NEWTON COUNTY MISSOURI



[MidwestLandGroup.com](http://MidwestLandGroup.com)

MIDWEST LAND GROUP IS HONORED TO PRESENT

# CUSTOM BUILT HOME WITH AN INCREDIBLE VIEW, OVERBUILT SHOP AND 66 ACRES OF GRASS

---

What do you look for in a build site or small recreational property in the country? Live water? Rolling hills covered in mature timber? Utilities in place or readily available? Existing buildings to store your gear and equipment? You'll find all of this and more on this mostly-wooded tract on Condor Road, just a few miles east of Seneca, Missouri. Midwest Land Group is proud to present this wonderful tract full of opportunity and promise.

There's something special about live water on a property, and when that something rushes forth from the ground as a strong spring, it's simply mesmerizing. Such a spring is present on this tract, producing many thousands of gallons of clean Ozarks water each day. From its point of origin at the base of a rocky hill, the spring flows through a peaceful little meadow that invites picnic lunches and wildlife watching. From the remnants still present, it's apparent that prior owners built a small dam below the spring to create a nice cold water pool, and such a feature could be restored to create a small pond that would certainly attract nature, and might even support coldwater fish such as trout.

This property was formerly a dairy farm. While the barn and home have been lost, a pair of concrete silos

bracket the barn's old foundation and offer a site ready for a new structure. West of the silos, you'll encounter a well house with a steel-cased well and next to it, an old wood-sided garage that's perfect for storing your gear out of the weather. The old farmhouse stood in this area, offering a nice site for a new home or cabin, or you might prefer to move uphill to a higher elevation and an expanded view.

Whitetail deer and wild turkeys are regularly observed slipping through the mature timber on the ridges and valleys, offering plenty of enjoyment whether your interests involve hunting or just watching the wildlife. The forested areas are mostly composed of red, white, and black oak, with some hickories and sugar maple mixed in. Spicebush and hazelnut grow in the understory, creating a diverse mix of flora.

This property is easy to access from Old Highway 60 or Highway CC. It has multiple build sites for a weekend cabin or your forever home. And if you're looking for a bit more room to roam, additional acreage is available nearby. To schedule an appointment to see this property before it's gone, call Land Agent Scott Sudkamp at (417) 321-5427 today.





# PROPERTY FEATURES

PRICE: **\$121,600** | COUNTY: **NEWTON** | STATE: **MISSOURI** | ACRES: **15.2**

---

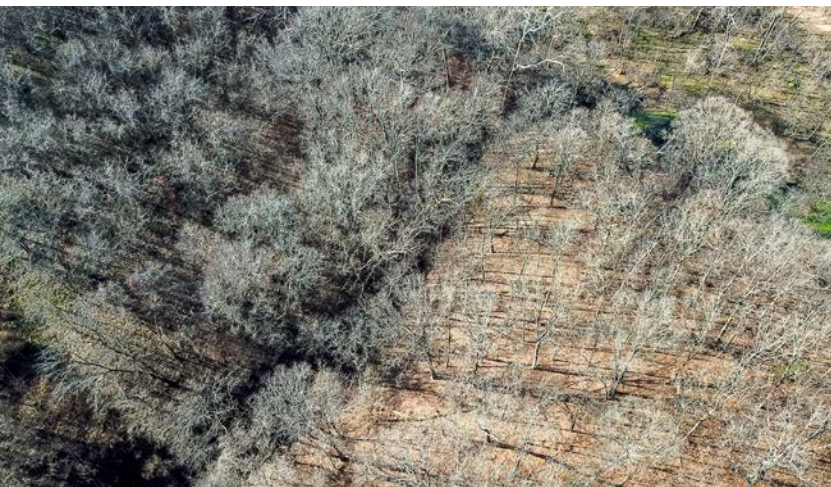
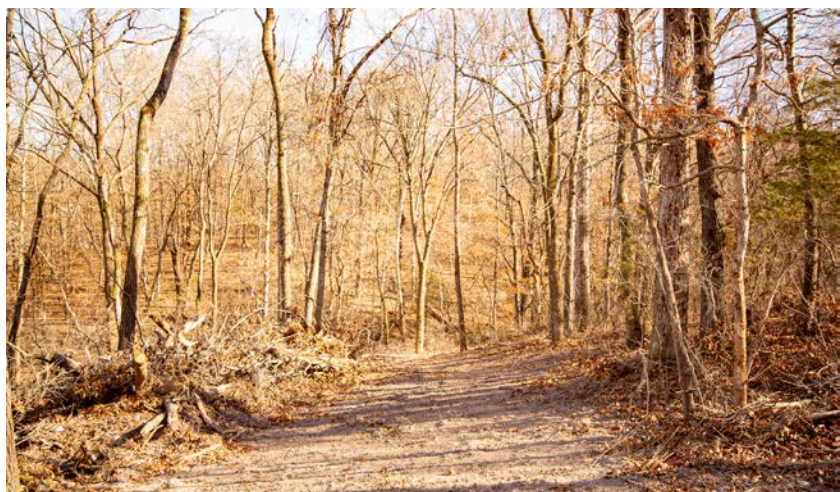
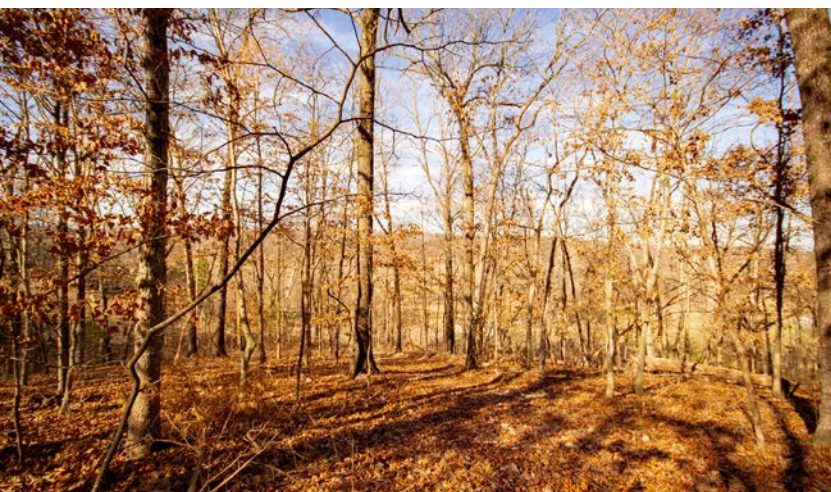
- 15.2 surveyed acres
- Great spring with good water flow
- 11+/- acres mixed hardwood timber
- Lots of mature oak - red, white, & black
- Old garage for covered storage of gear and equipment
- Cased well
- NewMac Electric service on site
- RV hookups - 50A plug and water
- Build site options
- Gorgeous setting
- Strong deer & turkey populations
- Additional land available
- 3.5 miles to Seneca, MO
- 15 miles to Neosho, MO
- 16 miles to Joplin, MO
- Seneca Schools





# 11+/- ACRES MIXED HARDWOOD TIMBER

---





# GARAGE

---



# GREAT SPRING WITH GOOD WATER FLOW

---





# BUILD SITE OPTIONS

---





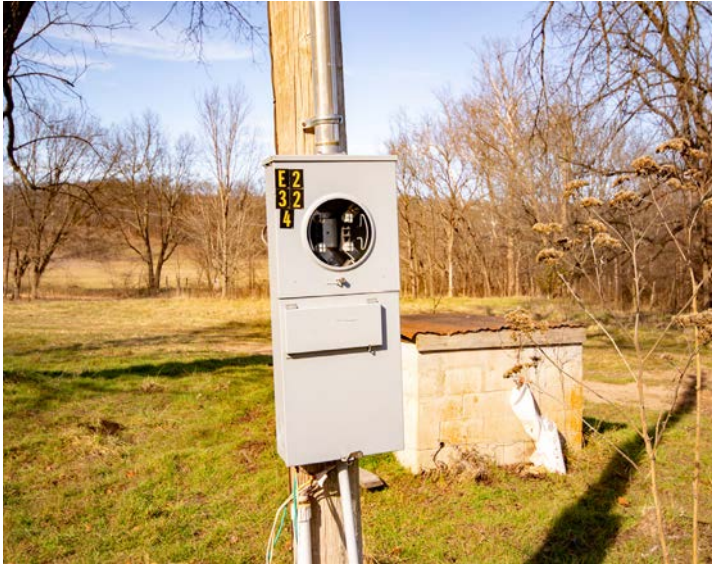
# STRONG DEER & TURKEY POPULATIONS

---



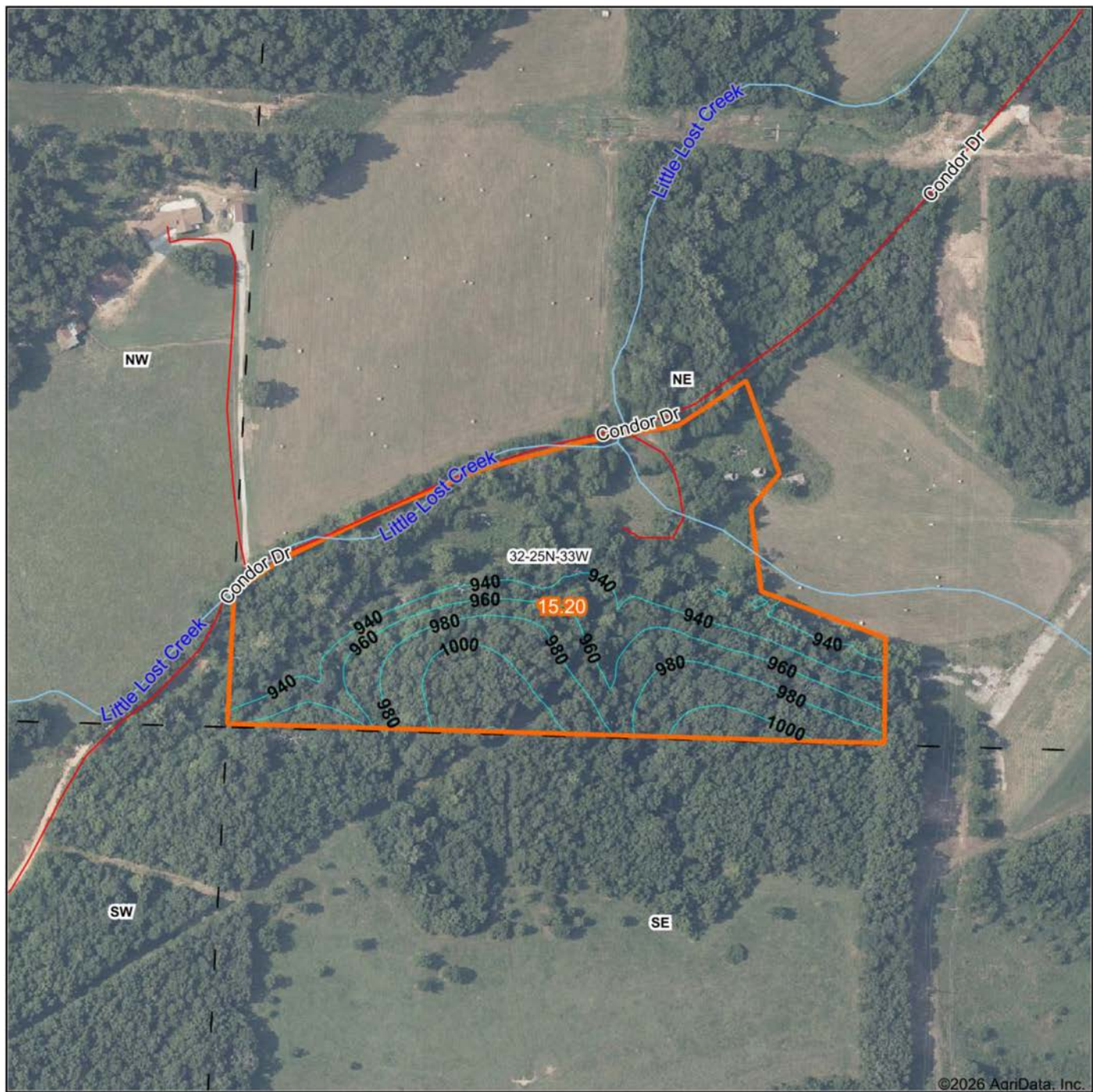


# ADDITIONAL PHOTOS





# TOPOGRAPHY MAP



Boundary Center: 36° 50' 47.34, -94° 33' 38.87

0ft 324ft 649ft



Maps Provided By:



© AgriData, Inc. 2025

www.AgrDataInc.com

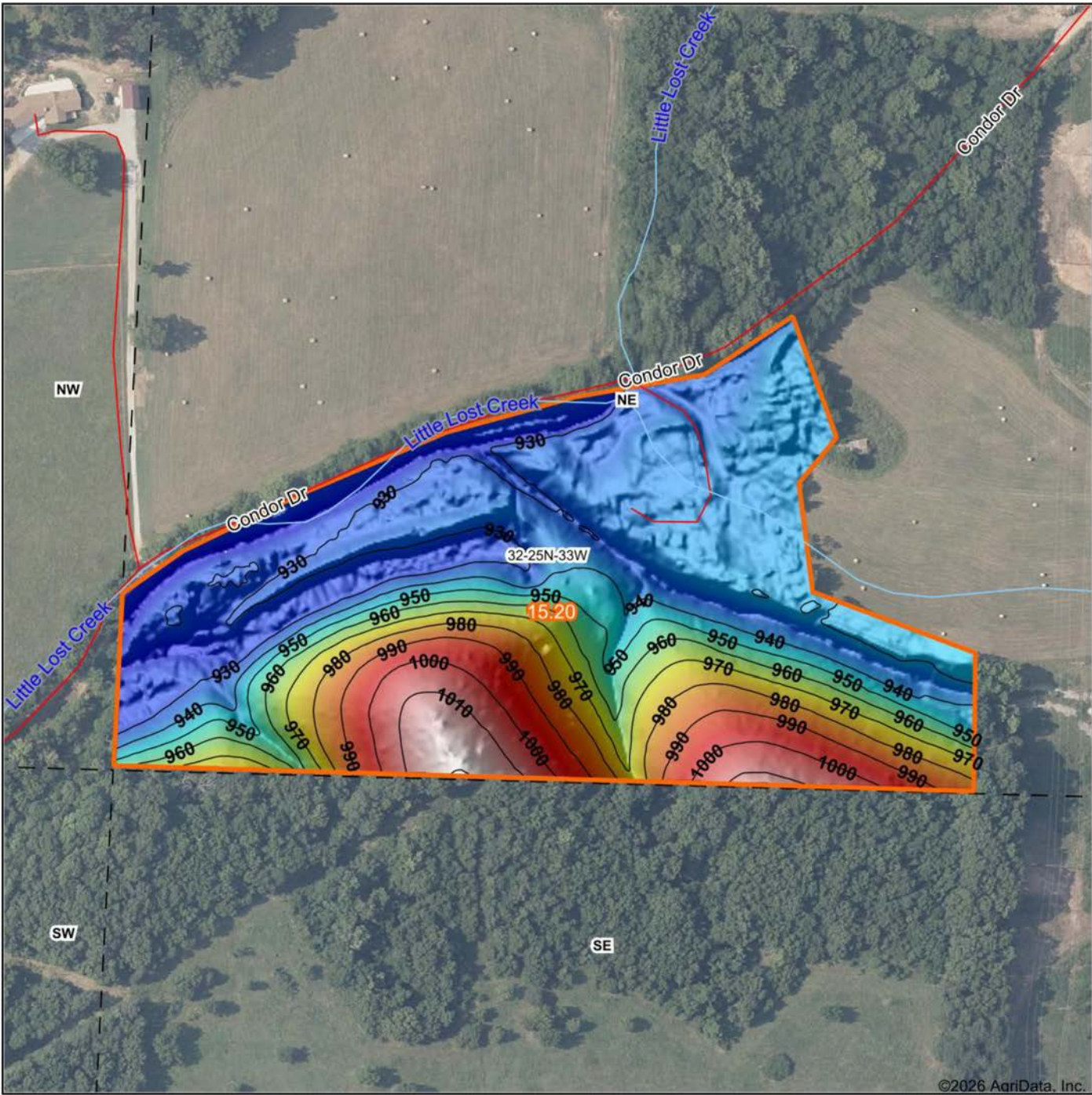
32-25N-33W  
Newton County  
Missouri



1/21/2026



# HILLSHADE MAP



Low Elevation High



Maps Provided By:



© AgriData, Inc. 2025 www.AgriDataInc.com

Source: USGS 1 meter dem

Interval(ft): 10

Min: 922.7

Max: 1,020.1

Range: 97.4

Average: 953.1

Standard Deviation: 26.54 ft

0ft 249ft 498ft



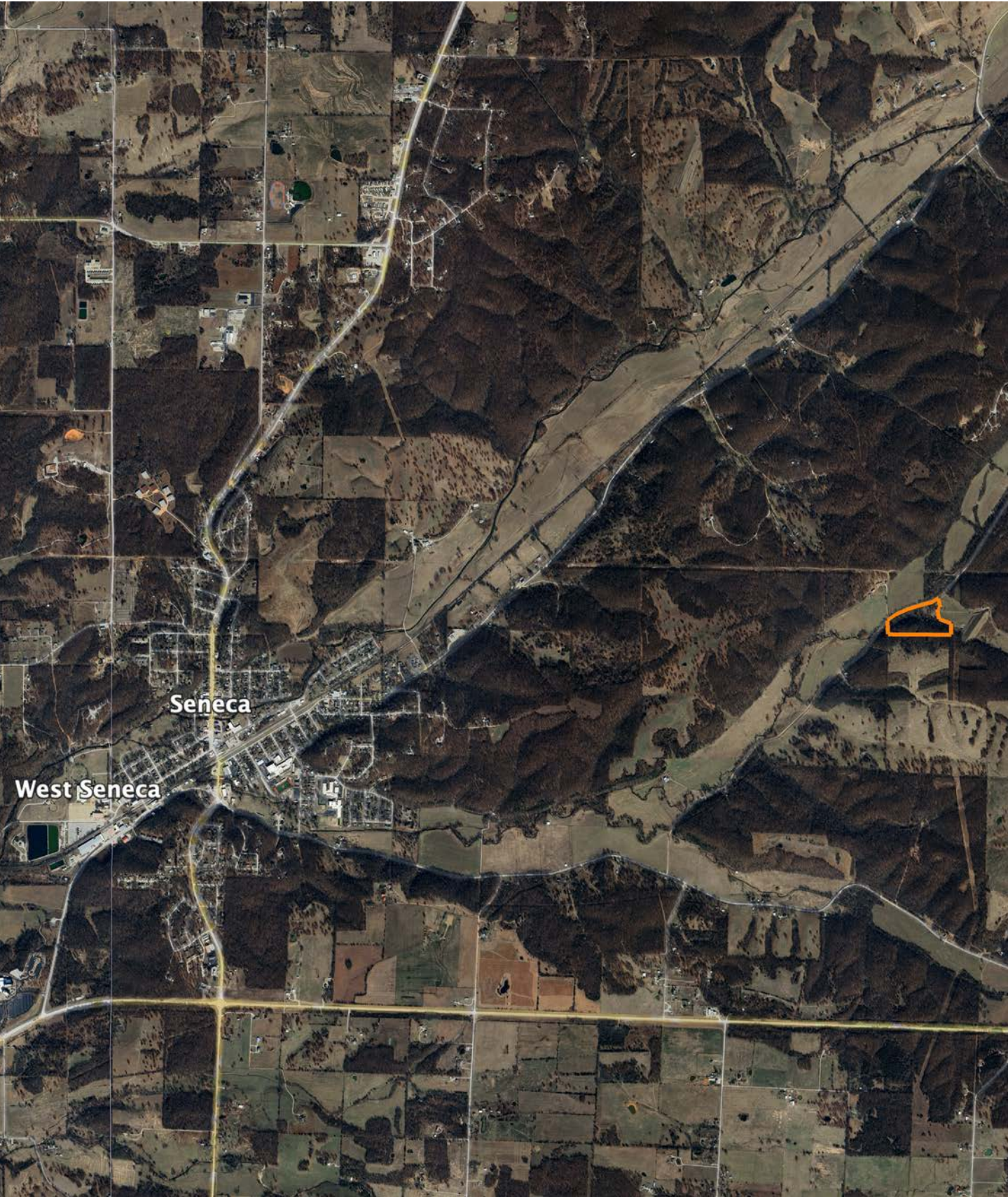
1/21/2026

**32-25N-33W**  
**Newton County**  
**Missouri**

Boundary Center: 36° 50' 47.34, -94° 33' 38.87



# OVERVIEW MAP





# AGENT CONTACT

For as long as he can remember, Scott Sudkamp has loved the land. Whether hunting, fishing, camping, or exploring, he's always been intrigued by prairies and rivers and wild places. His passion for wildlife and habitat led him to pursue degrees in environmental biology and wildlife management from Eastern Illinois University and Southern Illinois University. Following college, he spent nearly 20 years working as a wildlife biologist in Texas and Missouri as a public land manager and private land conservationist. He has an extensive background in managing wetlands, grasslands, and woodlands, and is well-versed in manipulating the land to benefit wildlife, including whitetails, ducks, wild turkeys, and upland game. His expertise managing land and wildlife gives him a unique perspective for understanding the land and recognizing its capabilities and potential.

Scott is a man of faith and serves as an elder and teacher at his church, and enjoys helping people pursue and realize their dreams. He and his wife Tina have been married for 30 years and raised their family on a farm in Vernon County, Missouri. He is an avid hunter and enjoys crisp November mornings bowhunting whitetails, sunrises on the marsh hunting mallards, and following bird dogs around in pursuit of pheasants, grouse, and quail. Scott loves guiding his clients through the buying and selling process and helping them achieve their goals and dreams. With his diverse background in land management and land sales, he's ready to go to work for you. Give him a call today.



**SCOTT SUDKAMP,**  
LAND AGENT

**417.321.5427**

[ScottSudkamp@MidwestLandGroup.com](mailto:ScottSudkamp@MidwestLandGroup.com)



## MidwestLandGroup.com

This property is being offered by Midwest Land Group, LLC. 913.674.8010. All information provided by Midwest Land Group, LLC or their agents was acquired from sources deemed accurate and reliable, however we do not warrant its accuracy or completeness. Midwest Land Group, LLC assumes no liability for error, omission or investment results. Midwest Land Group, LLC. Licensed in Alabama, Arkansas, Illinois, Indiana, Iowa, Kansas, Kentucky, Louisiana, Minnesota, Mississippi, Missouri, Montana, Nebraska, Ohio, Oklahoma, South Dakota, Tennessee, Texas, Wisconsin, and Wyoming.