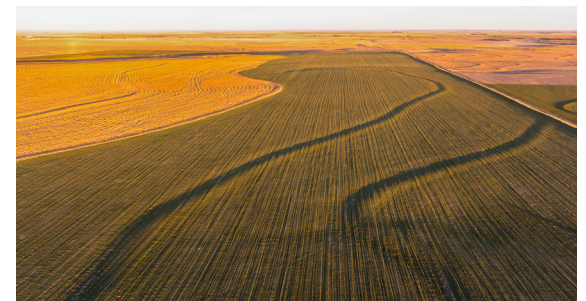
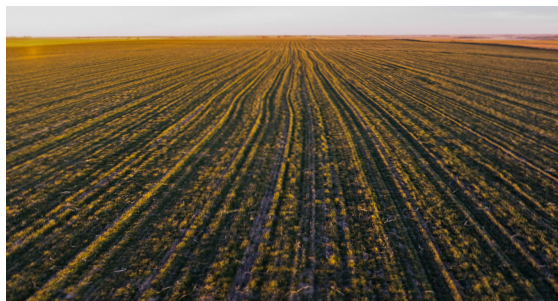
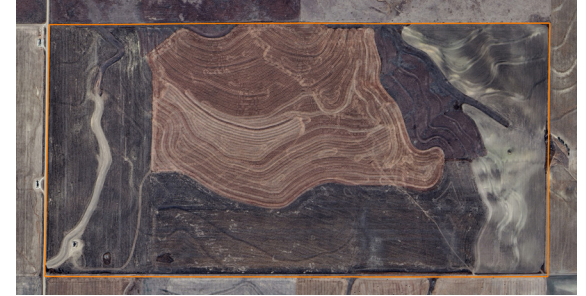


LAND FOR SALE

HIGH QUALITY TILLABLE AND OIL INVESTMENT IN NORTHEAST NESS COUNTY

COUNTY: **NESS**
STATE: **KANSAS**
ACRES: **321**



PROPERTY FEATURES

- 321 +/- acres in northeast Ness County, Kansas
- Mostly Class II tillable farm ground
- 182.80 acres planted to wheat
- 1/3-2/3 crop-share agreement
- Mineral rights convey
- \$2,700 annually in mineral income
- 1 mile off Highway 4
- 5 miles north of McCracken, Kansas
- For more information or to schedule a private viewing, contact the Listing Agent



For more information, contact:

COLE SCHUMACHER, Land Agent

785.624.2191 | CSchumacher@MidwestLandGroup.com

MidwestLandGroup.com



This property is being offered by Midwest Land Group, LLC, 7111 W. 151st Street, Ste. 27, Overland Park, KS 66223, 913.674.8010.
Licensed in AL, AR, IA, IL, IN, KS, KY, LA, MN, MO, MS, MT, NE, OH, OK, SD, TN, TX, WI, and WY.